



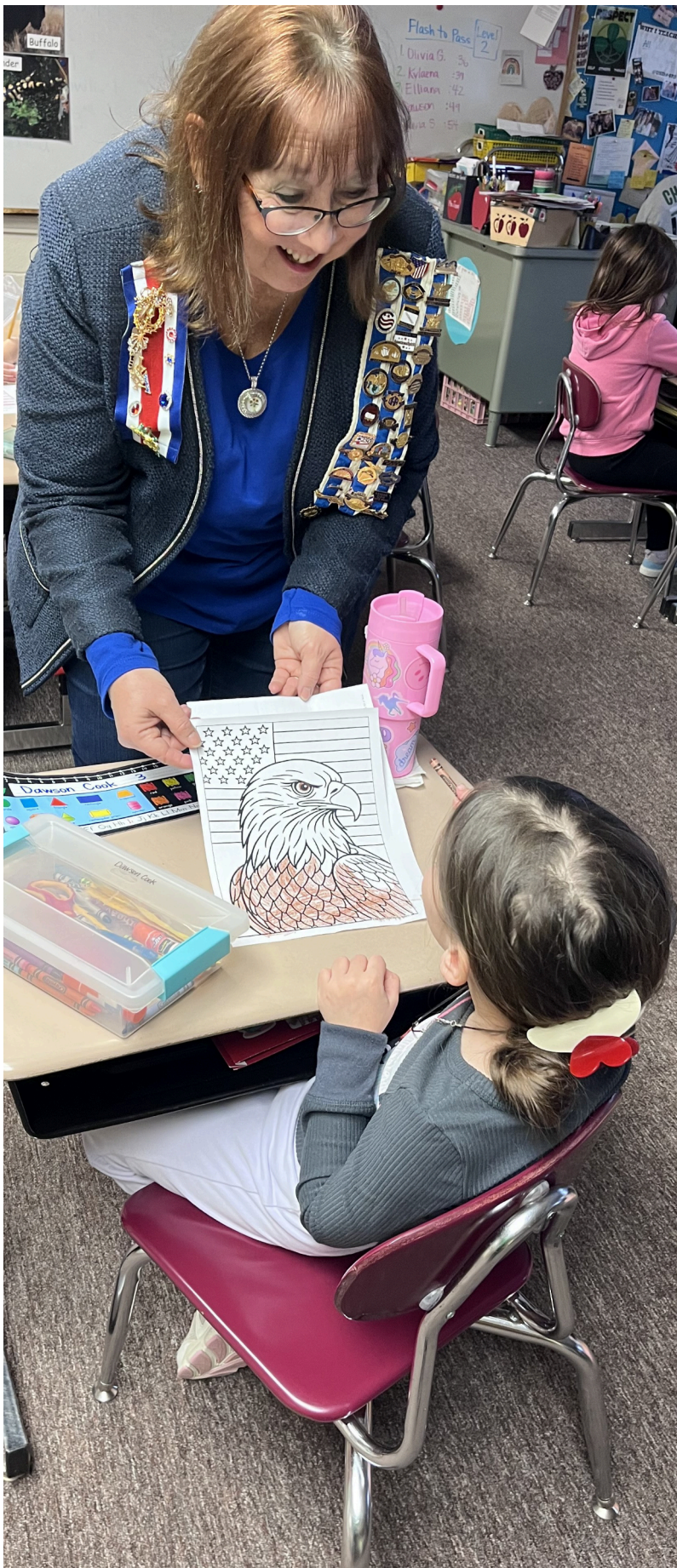
DICKINSON COUNTY NEWS-TIMES



Getting back to our roots



CHAPMAN. ENTERPRISE. HERINGTON . HOPE . AND SURROUNDING COMMUNITIES



ENTERPRISE STUDENTS CELEBRATE OUR COUNTRY'S BIRTHDAY THROUGH ART

With the upcoming celebration of our country's birthday, Leesa Hettenbach, Abilene Chapter DAR American 250! Chairman, has been promoting it. She and the Enterprise Public Library staff collaborated with the Enterprise 2nd -5th grade elementary student to make birthday posters. Librarian, Carllee Voit and helper Cheryl Dunham, provided pictures of American Flags, Happy Birthday Notes, We the People Signs, Bald Eagles and American 250 cutouts to be put on the posters. Glitter glue and ribbons were used to jazz-up the cards. Kindergarten and First graders did color sheets of the USA Flag and the American Bald Eagle. While the students were working on their art projects,

Leesa spoke about the Revolutionary War and the signing of the Declaration of Independence. She asked the 5th grade class when it was signed, and they knew July 4th , 1776. Daughter's of the American Revolution Society promotes Patriotic, Historical Preservation and Educational events. This activity at the school covered all three. She learned one student's birthday in on the 4 th and told him he is going to have the "biggest celebration" ever this year.

Pictured to left: Leesa Hettenbach talking to a first grader about our National Bird, the Bald Eagle.

Pictured above: American 250! Posters made by Enterprise Elementary Students hanging in the school's hallway.

Upgrades to Little Ike Park

Little Ike Park in downtown Abilene is expanding. The park is funded in part by Edwina Anderson, in memory of her beloved husband Donald, by grant funding from the Donald and Edwina Anderson Beautification for Abilene Parks Fund held at the Community Foundation of Dickinson County. In recent years Eddee has donated a Christmas tree as well as banners for the light poles surrounding the park. The underwater sprinkler system at the Eisenhower Rose Garden Park was paid for by Eddee and will be sponsored by her again this year. The fund is seeking donations to continue improvements to the park. As well as beautification of the location they are looking to secure additional funding to create more parking spaces so that there is room for everyone to enjoy this park and to make sure it remains open for years to come.



Donations to the fund are accepted all year long, and donations made on March 20th will be matched during Dickinson County Donation Match Day.

The beautification of our parks has been supported with grant funding from the Donald & Edwina Anderson Beautification for Abilene Parks Fund held at the Community Foundation of Dickinson County.



SCAN ME

Contact Information: Dickinson County News-Times
dk.co.newstimes@gmail.com • Phone 785-524-4200

Closed: Monday - Tuesday for Delivery and Production
Phone Hours: Wednesday - Friday 11 am - 3 pm

Worship Guide

First Baptist Church

9 am - Connection Section
Enjoy snacks, coffee & fellowship
9:30 am - Sunday School
For adults & kids of all ages
10:30 am - Worship Service
201 E. Hawley St.
Herington, KS 67449
785-258-3207
www.fbcherington.org

St. Michael Catholic Church

210 E. 6th St. • Chapman
Sunday Mass 9 a.m.
Fr. Peter O'Donnell
Marita Campbell,
Parish Life
Coordinator
785-922-6509
smichael-chapman@sbcglobal.net
www.smchapmanparish.org

Alida Upland
Cooperative Parish
2243 3300 Ave., Junction City
11 a.m. Worship Service

Enterprise Community Church
210 W. South St., Enterprise
9 a.m. Adult Sunday School
10:15 a.m. Worship

First Baptist Church
201 E. Hawley St., Herington
9 a.m. Connection Section
Coffee & Fellowship
9:30 a.m. Sunday School for
adults and children
10:30 a.m. Worship Service

First Christian Church
15 S. First St., Herington
9:30 a.m. Sunday School
10:30 a.m. Sunday Worship

Grace Baptist Church
117 E. Third St., Chapman
9:45 a.m. Bible School
10:45 a.m. Worship/Service

Immanuel Lutheran Church
2201 1000 Ave., Herington
8:30 a.m. Worship
(Alternating Sundays)

Our Redeemer Lutheran
802 E. Trapp, Herington
10:30 a.m. Worship

St. John's Lutheran Church
2124 Highway 4, Herington
8:30 a.m. Worship
(Alternating Sundays)

St. Paul Lutheran Church
114 N. Eighth St., Herington
9:30 a.m. Adult Bible Class
11 a.m. Worship/Communion

Sutphen Mill Christian Church
3117 Paint Rd., Chapman
9:30 a.m. Sunday School
10:30 a.m. Worship Service

Call 785-524-4200
to have your church added!



Rev. Connie D. Wooldridge
Chapman United Methodist Church

PASTOR'S CORNER

Just over two years ago, I was having a conversation with God. We talk a lot, but often I do most of the talking. On January 8, 2024, I was listening. Praying for the state of things in this world and in this country, I was pouring my heart out to God. God spoke to my heart and from those words I wrote

The Conversation

down the poem I want to share with you today.
The Conversation
Love your neighbor!
Which one?
The one on the left.
The one on the right.
The one across the alley.
The one across the street,
The one down the street,
The one up the street.
The one who is gay.
The one who is straight.
The one who—it would be easier to list the ones not to love.
Okay, tell me who not to love.
That list is blank—just love.



Mark Will
DCNT Columnist

THIS DAY - IN - THE HERINGTON TIMES

125 years ago – 1901
OUR NEW DRUG STORE –
Ketchersid & Donmyer's new Drug store at the corner of First and Main Street is certainly going to be an ornament to our town. Their furniture, including glass show cases, prescription cases, shelving cases extending to the ceiling, etc., is all brand new and is said to be the most expensive that was ever brought to Dickinson County or that can be found anywhere in Central Kansas. Dr. Donmyer is one of the best pharmacists the state affords, and in addition to his regular practice, will have general supervision of business at the store. They will open their doors for business tomorrow.

100 years ago – 1926
CAR THIEVES TURNED OVER TO UNCLE SAM AFTER SNOWSTORM- The two youths from Chicago who were caught here by Marshal Calkins in possession of a stolen car, are to be turned over to the department of justice at Kansas City. Since their arrest last week, they have been in jail at Abilene. This vicinity was visited by a near blizzard last Thursday. The snow south and west of Herington was much heavier The Rock Island trains from the south and southwest were a few hours late.

75 years ago – 1951
LOCAL MAN AWARDED BRONZE STAR – Sgt. Maxwell W. Kierstead, who is with the 24th Infantry Division in Korea, has been awarded the Bronze Star Medal. The citation states "Sergeant Maxwell Kierstead distinguished himself by heroic action

NEW IGA STORE

near Suan, Korea, on December 5, 1950. The convoy in which he was riding was attacked by a large energy force which had established a strong roadblock. With complete disregard for his own safety, he exposed himself to intense small arms fire organizing a defense and placing his machine guns in position from which fire could be brought to bear on the attacking force. Throughout the fierce fight, he repeatedly exposed himself to better direct his own men and aided materially in the successful defense of his unit which, when joined by friendly units, repulsed the enemy with heavy losses." Sargeant Kierstead is currently under observation after both of his hands were frozen while in Korea. 50 years ago – 1976

NEW IGA STORE TO OPEN – Catlin's IGA Supermarket will open its new store in Herington on the morning of Tuesday, March 4. Store Manager Glenn Catlin said Tuesday that stocking of the new store is already underway and that the supermarket will be ready for its first customers following a brief ribbon-cutting ceremony at 8:30 a.m. on March 4th. The store is located at Second and West Walnut streets. Catlin's old store on East Main Street will close at 7 p.m. on Saturday. From Sunday through Wednesday, the business will remain closed to permit the moving of merchandise and some equipment. The new store will increase the floor space of the supermarket by about three times. Herington Historical Society & Museum, 800 S. Broadway. Hours: 1 to 5 p.m. Tuesday through Friday. – markcwill1963@gmail.com

KVK INC.
Heating & Air Conditioning

Residential & Commercial
We Service & Warranty Parts For All Makes

24-HOUR EMERGENCY SERVICE

kvkinc.biz
Master Mech.
Licensed
Bonded
Insured

Ask About Our Discount Club Membership

785-257-3224

Gun & Ammo Show

Herington Community Building

810 S. Broadway
Herington, KS

Saturday, March 7
9 a.m. to 5 p.m.

Sunday, March 8
9 a.m. to 3 p.m.

ATM on Site
Also Knives,
Coins, Military surplus

**Info. Call Brett,
785-366-0245**

VIEW FROM THE HILL- Scott Hill

Protecting Farmers and our Food Supply Starts in Kansas
Kansas is often brushed off as a "flyover state." However, that label misses what really defines us. Look out the window anywhere across our great state, and you'll see farms, rolling hills, and sunflower fields stretching as far as the eye can see. As the nation's leading wheat producer, our farmers sit at the heart of America's breadbasket, helping supply a significant share of the almost one billion bushels of wheat Americans rely on each year.

That doesn't happen by accident. As a farmer myself, I've seen firsthand the long hours and careful decisions it takes for family farmers to grow the crops that turn into affordable, everyday staples for American families. I also know how important American-made crop protection tools are to making those harvests possible, year after year. But right now, those tools—and the farmers who depend on them—are at risk. Special interest groups are trying to force proven crop protection tools off the market through meritless lawsuits disguised as public service. In reality, these groups only care about profits, not protection. The people behind these efforts don't understand modern farming or what it takes to manage a crop from planting to harvest—much less what it means to carry on a farming legacy built over generations. They don't see the planning, the risk, or the consequences—they just see a chance to make money.

If lawmakers don't step in and close the legal loopholes being exploited, American manufacturers will be forced to stop producing these products altogether, leaving our farmers without a viable alternative or further driving our reliance on foreign adversaries. Without access to these tools, many crops won't make it to harvest. Weeds and pests will take over, leaving farmers with little or

nothing to sell, and no reliable way to support their families. That reality comes on top of already razor-thin margins, and unpredictable commodities markets.

For many farmers, taking American-made crop protection tools off the table wouldn't just make things harder—it would push them past the breaking point. And at a time when family farm bankruptcies are already rising nationwide, that risk is especially real in Kansas, where nearly 95% of farms are family-owned.

But this doesn't just affect farmers, it affects consumers, too. Poor harvests mean higher prices at the grocery store for basics like bread, flour, cereal, and other typically affordable staples millions of Americans rely on.

There's also a national security risk we can't ignore. If American-made crop protection tools disappear, our farmers will be forced to turn to China as the only remaining supplier. That's not a position we should be putting ourselves in. As a state senator, I can't accept a future where a foreign nation has leverage over our food supply. The time to act is now. The House has already passed HB 2476, and now it's up to the Senate to do its part to get this legislation over the finish line. Every year, we trust our farmers to grow the crops that feed America and power Kansas' economy. Now they're trusting us to have their backs.

This bill is a common-sense fix. It simply confirms an assumption our farmers have long operated under: that EPA-approved pesticide regulations meet Kansas' standards, too. Our farmers know their land, their crops, and the tools they need to succeed. It's up to us to make sure they can keep using high-quality, American-made crop protection tools, and keep Kansas at the heart of America's breadbasket.

Herington Housing Authority

Public Meeting

Thursday, February 26, 2026, 6pm

Golden Age Homes Club House, 201 E. Helen Street, Herington, Kansas

BUSINESS & SERVICE DIRECTORY

Call 785-524-4200 or Email dk.co.newstimes@gmail.com to order your directory ad!

FINANCIAL

First National
Investment Professionals

DAN COOK

112 North Main
Hope, KS
785-366-7225
Fax
785-366-7333
dan.l.cook@ampf.com

"A Tradition of Caring Since 1970"

Chapman Valley Manor
A Non Profit Skilled Nursing Facility

Administrator:
Amanda Jeardoe
1009 Marshall • PO Box 219
Chapman, KS 67431
785-922-6525
chapval@chapmanvalleymanor.org
christyloy@chapmanvalleymanor.org

HVAC

KVK INC.
Heating & Air Conditioning

Residential • Commercial
24 HOUR SERVICE
Master Mechanical
Licensed
Bonded • Insured

785-257-3224
kvkinc.biz **NEW YORK**

Home comfort you can depend on

You can count on Heil!
Air Conditioning systems for high efficiency Air Conditioning and reliable performance, backed by outstanding warranties.

Herington Heating, Air Conditioning, Plumbing & Appliances
110 E. Main, Herington
785-258-3355
Mon. - Fri.
8 a.m. - 4:30 p.m.

INSURANCE

HARRIS CROP INSURANCE, LLC

785-479-5593 or
Toll Free 888-408-7487

A family-owned and operated crop insurance agency serving central Kansas since 1981.

1207 Hwy. 15, Abilene, Kansas 67410
www.harriscropinsurance.com
This agency is an equal opportunity provider.

STEVE CRICHTON State Farm Insurance Agent

OFFICE HOURS
Tues & Thurs
9:30 am - 4 pm
Sat 9 am - 12 pm
220 W Walnut St.,
Ste 2 Herington

PHONE 785-258-2203
shelly@stevecrichton.com
steve@stevecrichton.com

State Farm
Here to help life go right.™
stevecrichton.com

RECREATION

Indian Hill GOLF COURSE

9 hole course with cart rentals no tee time
Located 1 mile off I-70, exit 286
522 Golf Course Rd. Chapman
785-922-6203
chapmanks.com/activities
indian-hill-golf-course

SIMMONS
Towing & Auto Repairs
Herington, KS

456 Highway 77
785-258-8024

Cleaning your house while kids are still rowing is like shoveling the walk before it stops snowing.

VETERINARY

COUNTRYSIDE VETERINARY SERVICES

Quality and Compassionate Veterinary Care for Your Pets & Livestock

781 Hwy 43, Hope
785-366-6587
Monday - Friday
9 a.m. - 5 p.m.

Check Out the **LOCAL SCENE**

shopping • dining • drinking • events • entertainment

LET US HELP PROTECT YOUR DREAMS.

Brian Tajchman, Agent, Inc.
Brian J. Tajchman, Agent
104 Nw 3rd S. Abilene
btajchman@amfam.com
(785) 263-2512

24-HOUR CLAIMS REPORTING & CUSTOMER SERVICE
1-800-MYAMFAM (692-6326)

AMERICAN FAMILY INSURANCE

HOME | AUTO | LIFE | BUSINESS | FARM & RANCH | AMFAM.COM

Jim's Metal Roof Coatings
Leak Repair, bin tops, flat decks
Quonset roofing metal/galvanized
Asphalt Shingle roof coating
Painting exterior steel or aluminum
Statewide service - Free Estimates
785-201-7622

Hilltop Community Center
Fun for Seniors

2 South A St. • Herington • 785-258-2956

8 a.m. ~ Coffee is on!
Monday - Friday

Every Monday ~ 1 p.m.
Mexican Train Dominoes
Come Join This Fun Bunch!

Everyday ~ 1 p.m. Cards
Puzzles and Games every day!

Wednesday, February 25: 11:30 Trivia Day!
Friday, February 27: Noon in House Potluck Dinner

Tuesday, March 3: 11:30 a.m. Puzzle Day
Sunday, March 8: Daylight Savings Day
Wednesday, March 11: 10:30 a.m. Bingo with prizes (hosted by Home Health)

Tuesday, March 17: St. Patrick's Day!!
Corn beef and Cabbage for lunch at the Hilltop

Thursday, March 19: 9:00 a.m. -?:
FOOTCARE! Call for appointments: 785-258-6028!

Friday, March 20: FIRST DAY OF SPRING!!
Wednesday, March 25: 11:30 - Trivia Day

Classified

Misc. **STOP OVERPAYING FOR HEALTH INSURANCE!** A recent study shows that a majority of people struggle to pay for health coverage. Let us show you how much you can save. Call Now for a no-obligation quote: 1-833-928-5491 You will need to have your zip code to connect to the right provider.

Misc. **ATTENTION: VIAGRA and CIALIS USERS!** A cheaper alternative to high drugstore prices! 50 Pill Special - Only \$99! 100% guaranteed. CALL NOW: 1-833-641-6607

Misc. **We Buy Vintage Guitars! Looking for 1920-1980 Gibson, Martin, Fender, Gretsch, Epiphone, Guild, Mosrite, Rickenbacker, Prairie State, D'Angelico, Stromberg. And Gibson Mandolins / Banjos.** These brands only! Call for a quote: 1-833-641-6990

Misc. **GOT AN UNWANTED CAR??? DONATE IT TO PATRIOTIC HEARTS.** Fast free pick up. Patriotic Hearts' programs help veterans find work or start their own business. Call 24/7: 1-833-485-0154.

Misc. **BATH & SHOWER UPDATES in as little as ONE DAY!** Affordable prices - No payments for 18 months! Lifetime warranty & professional installs. Senior & Military Discounts available. Call: 1-833-752-0092

Misc. **WATER DAMAGE CLEANUP & RESTORATION:** A small amount of water can lead to major damage in your home. Our trusted professionals do complete repairs to protect your family and your home's value! Call 24/7: 1-833-879-1451 Have zip code of service location ready when you call!

Misc. **NEED NEW WINDOWS? Drafty rooms? Chipped or damaged frames?** Need outside noise reduction? New, energy efficient windows may be the answer! Call for a consultation & FREE quote today. 1-833-880-0052 You will need to have your zip code to connect to the right provider.

Misc. **DENTAL INSURANCE** from Physicians Mutual Insurance Company. Coverage for 400 plus procedures. Real dental insurance - NOT just a discount plan. Do not wait! Call now! Get your FREE Dental Information Kit with all the details! 1-844-216-6942 [#6258](http://www.dental50plus.com/newstimes)

Senior Center Menus

Abilene Senior Center
100 N Elm St. • Abilene • 785-263-7059

Chapman Senior Center
439 S Marshall • Chapman • 785-922-6958

Solomon Senior/Friendship Center
119 W 4th Ave • Solomon • 785-655-9435

Friday, February 27: Fish & Cheese on Bun, Au Gratin Potatoes, Steamed Vegetables, Fruit Cobbler

Monday, March 2: Meatloaf W/ Gravy, Mashed Potatoes, Green Beans, Applesauce, Wheat Roll

Tuesday, March 3: Turkey & Rice Casserole, Cauliflower, Fruit Salad, Wheat Bread

Wednesday, March 4: Beef Stroganoff over Noodles, Brussel Sprouts, Carrots, Peach Crisp, Wheat Roll

Thursday, March 5: Beef Vegetable Soup, Kidney Bean Salad, Crackers, Pears, Muffin

Hilltop Community Center
2 South A St. • Herington • 785-258-2956

Friday, February 27: POT LUCK IN HOUSE!
Bring a Side Dish or Dessert!
Sloppy Joes, Potato Wedges, Vegetables, Fruit

Monday, March 2: Vegetable Beef Soup, Crackers, Coleslaw, Pears, Milk

Tuesday, March 3: Turkey & Rice Casserole, Peas, Dinner Roll, Fruit Salad, Milk

Wednesday, March 4: Beef Stroganoff Over Noodles, Carrots, Peach Crisp, Roll, Milk

Thursday, March 5: Meatloaf, Mashed Potatoes with Gravy, Salad, Roll, Milk

LEGACY AT HERINGTON
Skilled Nursing Care
2 E Ash St., Herington, KS 67449 • (785) 258-2283

Classified

For Sale Place your 25-word classified in the Kansas Press Association and 135 more newspapers for only \$300/week. Find employees, sell your home or your car. Call the Kansas Press Association @ 785-271-5304 today!

Misc. **CASH PAID FOR HIGH-END MEN'S SPORT WATCHES.** Rolex, Breitling, Omega, Patek Philippe, Heuer, Daytona, GMT, Submariner and Speedmaster. These brands only! Call for a quote: 1-833-641-4573.

SUDOKU

6			2		7			8
	1							
				9				3
	9	4	7			5	6	
					8			
		2		4				
		7	9			4		
9			6			1		
				5	4			

Level: Advanced

Fun By The Numbers

Like puzzles? Then you'll love sudoku. This mind-bending puzzle will have you hooked from the moment you square off, so sharpen your pencil and put your sudoku savvy to the test!

6	5	3	2	1	7	9	4	8
4	1	9	3	8	6	7	2	5
5	2	7	9	8	3	6	1	4
8	9	4	7	3	2	5	6	1
1	3	8	6	9	4	5	7	2
7	3	1	5	6	8	9	4	2
3	8	7	9	2	1	4	5	6
9	4	5	6	2	1	7	8	3
2	8	1	3	6	7	9	5	4
8	9	4	7	3	2	5	6	1
1	2	6	8	5	4	3	7	9

ANSWER:

Let us help you get the word out!

**HIRING?
SELLING?
BUYING?
RENTING?**



VOLUNTEERS NEEDED!

CALLING ALL VOLUNTEERS!
WE NEED YOUR HELP!

- Sunflower State Spelling Bee - Salina, KS
• March 21, 2026
- Kansas State Battle of the Books - Emporia, KS
• May 8, 2026
- Kansas Civic Games - Topeka, KS
• October 29

Contact the Kansas Press Association today to learn more about these exciting volunteer opportunities

785-271-5304

www.kspress.com

Twin Valley & FlagshipKansas.Tech Partner to Bring Free AI Skills Training to Rural Communities

With Twin Valley's sponsorship, upcoming sessions in Abilene and Mulvane will be open to the community at no cost.

Miltonvale, Kan. – Twin Valley, a family-owned and local Kansas broadband and communications company, has partnered with FlagshipKansas.Tech to offer free AI Starter Lab workshops. The events are open to the public and designed to help everyday users, from working professionals to small business owners, get comfortable using artificial intelligence tools in their daily lives. "Twin Valley is invested in the future of rural Kansas communities, and we know that access to fast and reliable internet is only part of the equation for digital equity. As AI becomes a part of everyday work and life, the people and communities who don't engage with it early will find themselves at a real disadvantage. These workshops are one way we can help ensure rural Kansans don't just keep up, but lead the way," said Megan Harper, Twin Valley director of marketing & sales. The workshops require no technical background and cover practical skills like writing effective prompts, using AI to save time on everyday tasks, and applying AI responsibly in the workplace or for a small business. Attendees are encouraged to bring a laptop for the hands-on portion of the session.

Abilene Community Center
1020 NW 8th Street, Abilene, KS 67410
Thursday, February 26, 2026
5:30–7:30 p.m.
Register by February 23

Mulvane Public Library
408 N 2nd Ave, Mulvane, KS 67110
Tuesday, March 24, 2026
5:30–7:30 p.m.
Register by March 20

The community center and library will be open for regular activities and programming. Please refer to their websites for rules on parental supervision: Abilene Community Center, Mulvane Public Library.

Organizations interested in hosting their own AI workshop can also partner with FlagshipKansas.Tech to bring customizable training to their employees, clients or the broader public. Learn more here: https://flagshipkansas.tech/events/ai-workshops.

About the Instructor

The Abilene and Mulvane workshops will be instructed by Luis Rodriguez, President of TEC Systems Group and a consultant at Cornerstone Data. A founding board member of FlagshipKansas.Tech, Luis is an executive leader, technologist, and enthusiastic advocate for the Kansas tech industry whose passion for both the advancement of technology and helping unlock the potential of people, communities, and businesses drives everything he does.

About Twin Valley

Twin Valley is a fourth-generation family business that has over 80 years' experience providing cutting-edge technology and connectivity throughout the central U.S. Twin Valley helps customers unlock possibilities to realize their full potential by providing a unique combination of broadband, mobile, home security, managed IT services, technology consulting, professional services, and cloud/data center solutions for both residential and business customers.

Twin Valley made a Pledge to their communities and customers, always striving to provide the most reliable broadband network, the best value for internet, local hometown customer service and meaningful community outreach initiatives. Learn more at twinvalley.com/pledge.

About FlagshipKansas.Tech

FlagshipKansas.Tech is a nonprofit organization that brings together Kansas technology companies to shine a light on the depth of skill, ingenuity, and innovation running through our cities and communities. Current goals include raising awareness, attracting and retaining technology talent, and supporting technology workforce training and education. Learn more at flagshipkansas.tech.

Manhattan, Kansas Florist Sara Larson Selected to Co-Design Major Exhibit at 2026 Philadelphia Flower Show

Manhattan, Kansas Florist Sara Larson Selected to Co-Design Major Exhibit at 2026 Philadelphia Flower Show
Manhattan, KS / Philadelphia, PA — Internationally recognized orchid authority Arthur Chadwick, owner of Chadwick & Son Orchids and author of the acclaimed book First Ladies and Their Orchids, will present a major feature exhibit at the 2026 PHS Philadelphia Flower Show, running February 28 through March 8 at the Pennsylvania Convention Center.

Now in its 197th year, the Philadelphia Flower Show is the largest and longest-running horticultural event in the world, welcoming more than 250,000 visitors annually and drawing global attention for its immersive floral installations, world-class plant competitions, and innovative design. Chadwick's exhibit, titled "First Ladies and Their Orchids," brings to life the historic relationship between America's First Ladies and the iconic Cattleya orchid—a floral symbol long associated with elegance, diplomacy, and state affairs. The installation traces ten consecutive First Ladies, from Edith Wilson through Patricia Nixon, who embraced orchid corsages as part of their signature style.

Adding a strong Kansas presence to the international event is Sara Larson of Manhattan, Kansas, owner and lead designer of Wild & Blooming Floral & Events, who was selected by Chadwick to serve as the exhibit's floral design collaborator.

Larson, whose studio is based in the heart of the Flint Hills, is known for refined, story-driven floral design and thoughtful event styling. Her work spans weddings, large-scale installations, and editorial projects throughout the Midwest and beyond. In 2024, Larson was also selected as a floral designer for the White House Christmas decorations, contributing to the nationally televised holiday showcase in Washington, D.C. To bring the exhibit to life, Chadwick and Larson have collaborated closely on the

design and curation, incorporating rare and historically significant orchids from Chadwick's private collection. Together, they also worked directly with First Families to procure authentic memorabilia for the installation, including a special piece from the collection of Mamie Eisenhower, loaned by her granddaughter, Mary Jean Eisenhower. The exhibit is an adaptation of Chadwick's book of the same name and follows the success of his recent appearance at the Chelsea Flower Show in London, where his work earned a prestigious Silver-Gilt award and a visit from Queen Camilla. The installation has received endorsements from the National First Ladies Museum & Library, the Edith Bolling Wilson Foundation, and the National First Ladies Day Commission.

"Orchids were more than fashion accessories—they were symbols of grace, romance, and prestige," said Chadwick. Abilene resident, Mary Jean Eisenhower echoed that sentiment, noting, "My grandmother felt she would be underdressed if she wasn't wearing an orchid corsage." For Larson, the project represents both a professional milestone and a point of pride for her hometown.

"Collaborating on this exhibit has been a rare opportunity to blend living history with floral design at the highest level," Larson said. "To represent Kansas—and especially Manhattan—on an international stage like the Philadelphia Flower Show, following my experience designing for the White House, is incredibly meaningful."

The exhibit will be centrally located within the show's 2026 theme, "Rooted: Origins of American Gardening," which explores how American history, culture, and horticulture intersect.

The Philadelphia Flower Show is open to the public, with VIP and group tours available.



POSTMASTER Send change of address to: Dickinson County News-Times P.O. Box 109, Herington, KS 67449
SUBSCRIPTION RATES Digital Only \$38.00
DICKINSON COUNTY NEWS-TIMES SERVING HERINGTON, AND SURROUNDING AREAS
JLS GROUP LLC
DICKINSON COUNTY NEWS-TIMES - THE HILL CITY TIMES - LINCOLN SENTINEL-REPUBLICAN
DALE WORLEY - OWNER - JLS GROUP
LAUREN HOUCHEM-PUBLISHER/PAGINATOR
BRANDY SENSMEIER-EDITOR/OFFICE
ANNA KRISTEK-GRAPHIC DESIGNER
P.O BOX 109, HERINGTON, KS 67449- PHONE (785)524-4200- USPS 242-100- DK.CO.NEWSLETTERS@GMAIL.COM - JLSNEWSGROUP.COM

"I RISH YOU JOY!!!"

March 5, 2026 Emmanuel Church, Abilene, KS

This is an open invitation for women of all ages to join us in a morning Coffee Connection. The Abilene Christian Women's Connection is sponsored by Stonecroft Ministries. The meeting will be on Thursday, March 5, 2026 Meeting in the Emmanuel Church - 1300 N. Vine Street- Abilene - beginning at 9:30 AM . Gathering Music will be provided by the Emmanuel Church and Special Music Feature will be Jean and Arnie Boyd.

The Main Speaker is Pat Rohling from Valley Center, her speech is titled

"A Girl Named Peaches".

The special feature will be the new Executive Director of Neighbor to Neighbor – Amanda Robinson.

Reservations are encouraged by calling Sharon Darling at 785-479-1002 or email: sdllaptop2021@gmail.com by February 28 th .

Cost is \$6.00 inclusive. All ladies are encouraged to "Wear GREEN" for St. Patrick's Day if they choose.

The Abilene Christian Women's Coffee Connection is proud to have been meeting in Abilene for over 50 years. Bringing faith, fellowship and friendship to ladies of all ages.



These members of the HHS Volleyball team earned Kansas Volleyball Association All-Academic First Team Honors. They maintained a 3.8 and above GPA their fall semester. Great job in the classroom as well as the court girls!

(Courtesy USD 487)

SpiceUpYourLife-ButterPecanBars
Lindsey Young



Butter pecan bars are made with a secret ingredient—a cake mix—making them super easy to put together while being a delicious addition to any dessert table.

Raise the bar with a dangerously easy pecan dessert

The National Pecan Shellers Association has a wealth of knowledge about pecans on its website.

One of the items that interested me the most is that the pecan tree is the only major nut tree native to North America.

I thought that was strange, because I know quite a few nuts who were born here, but what do I know?

Pecans have a long tradition in the region, with Native tribes cultivating wild trees as far back as the 1500s.

Even today, the association states that the United States produces about 80 percent of the world's pecans.

When I was trying to decide what to make for a recent gathering, I found myself with a real hankering for something nutty, and that's when I ran into a super easy dessert online.

It comes from the account @debtfreegranny on Instagram. This was simple enough that I didn't mess with the recipe, but I did decrease the baking time by quite a bit, and that was a good move.

Butter Pecan Bars
Ingredients

- 13.25 ounce butter pecan cake mix
- 8 tablespoons butter, softened
- 3 eggs
- 8 tablespoons butter, melted
- 16 ounces powdered sugar
- 8 ounces cream cheese

1 cup pecans, chopped
Directions

Preheat the oven to 300 degrees. Grease a nine-by-13-inch baking dish with butter, and set it aside. Add the cake mix, softened butter and one egg to a mixing bowl, and beat until it's well combined.

Press the mixture evenly into the bottom of the prepared pan. Add two eggs, melted butter, sugar and cream cheese to a mixing bowl (you can use the same one), and beat until it is smooth.

Pour the mixture evenly over the bottom layer, and sprinkle the top with all of the pecans, pressing them lightly into the batter.

Bake for one hour or until the top is set and a toothpick inserted into the center comes out with only wet crumbs (think cheesecake consistency).

Let the bars cool completely before cutting. Store them in an airtight container in the refrigerator.

This was really simple, and the flavor was out of this world. It had a cake-y bottom with a cheesecake-y middle and lots of great pecan crunchiness on top. It was perfect to throw on a dessert table to share with friends. And, it appears, eating pecans is a great North American tradition, so I'm pretty sure these bars are an excellent way of honoring our history.

I just wonder if the Native tribes had cake mixes laying around, too.

Spice Up Your Life is a weekly recipe column by Lindsey Young, who describes herself as an enthusiastic amateur cook and can be reached through her website at spiceupkitchen.net.

Catholic Charities

St. Michael Catholic Church
210 E 6th ST
Chapman, KS 67431
Every 4th Wednesday of the month
9am-10am

St. John Catholic Church
712 Broadway
Herington, KS 67449
Every 1st Wednesday of the month
1pm-2pm

St. Andrew Catholic Church
311 S Buckeye Ave
Abilene, KS 67410
Every 3rd Wednesday of the month

Immaculate Conception Catholic Church
3599 N Field Rd
Solomon, KS 67480
Every 3rd Wednesday of the Month

Enterprise Community Church
210 S High St.
Enterprise, KS 67441
Every 4th Wednesday of the Month
10:30am till 11am

DRIVE THRU FOOD PICK UP

First UMC Manhattan
1710 Avery Avenue
Manhattan, KS 66503
785-539-1748
PLEASE CALL TO CONFIRM HOURS
Tue
3rd of each month 9:30 AM - 10:30 AM

Westview Community Church
615 Gillespie Drive
Manhattan, KS 66502
785-537-7173
PLEASE CALL TO CONFIRM HOURS
Fri
1st of each month 10am-11am

Ogden Community Center
220 Willow Street
Ogden, KS 66517
785-564-0071 or 785-410-6672
PLEASE CALL TO CONFIRM HOURS
Tue
4th of each month 9:30am-10:30am

Highview Church
402 Main Street
Alta Vista, KS 66834
620-767-2844
PLEASE CALL TO CONFIRM HOURS
Tue
4th of each month 11:30 AM 12:30 PM

EVENTS

26 Feb, Thu
 All day National FFA Week (Day 6/8)
 All day KMEA All-State Band/Choir (Day 1/3)
 All day USD 487 Sub-State Quarterfinals (Day 1/2)
 6 – 7am USD 473 FFA Community Breakfast
 4:30 – 5:30pm USD 473 V BB @ Santa Fe Trail (RV - Reschedule)
 4:30 – 5:30pm USD 473 7th BBB NCKL @ Ft. Riley
 4:30 – 5:30pm USD 473 8th BBB NCKL @ Abilene
 6 – 7pm Post 12 American Legion-Herington

27 Feb, Fri
 All day National FFA Week (Day 7/8)
 All day KMEA All-State Band/Choir (Day 2/3)
 All day USD 487 Sub-State Quarterfinals (Day 2/2)
 All day USD 473 WR B/G State @ Salina (Day 1/2)
 All day State Wrestling (Day 1/2) Hays
 All day END OF 3RD NINE WEEKS
 7:30 – 9am USD 473 FFA - Middle School Event
 2:45pm USD 487 MS/HS Archery Group Pictures
 6 – 7:30pm USD 487 ES Literacy Night
 6:30 – 7:30pm VFW Bingo 101 E Main St

28 Feb, Sat
 All day National FFA Week (Day 8/8)
 All day KMEA All-State Band/Choir (Day 3/3)
 All day WR B/G State @ Salina (Day 2/2) Hays
 All day State Wrestling (Day 2/2) Hays
 8:30am – 4:30pm USD 487 High School Forensics Abilene
 5 – 6pm USD 473 FFA Work Auction
 5pm USD 487 FFA Work Auction @ Herington Community Building

1 Mar, Sun
 7 – 8:30pm USD 473 District Choir - 6th thru 12th

2 Mar, Mon
 All day USD 473 BB V Sub-State Tournament Week - Mar. 2-7 (Day 1/6)
 All day USD 473 Spring Sports Practice Begins
 9 – 10am Veterans Coffee The Pin Up Cafe

3 Mar, Tue
 5:30 – 6:30pm Herington Commission Meeting
 6:30 – 7:30pm HS Winter Awards Night Herington High School Gym

4 Mar, Wed
 All day FFA Discussion Meet @ Junction City
 3:30 – 5pm Cheer Clinic, HS Gym
 6 – 8pm Youth Wrestling District Gym, Wrestling Room



Congratulations to our HHS wrestlers qualifying for state. Reid placed second at 144, Colton placed 4th at 152 and Aiden placed 4th at 113.



Local Journalism Helps Protect Our Community.
 Your Support Helps Protect Local Journalism.
SUBSCRIBE NOW!

qualify
 state
 next
 JR)
 144
 nn
 rd at
 ey
 rd at
 ker
 th at
 3R)
 157
 cker
 th at
 k 5th
 bite
 y 8
 the
 t.
 USD

2026 Chisholm Trail District 4-H Day Results

Chisholm Trail District 4-H Day was hosted in Abilene at the Emmanuel Church on Saturday, February 14. Marion and Dickinson County club members had the opportunity to showcase their public speaking, demonstration, musical, and acting talents. Top presenters in each category qualify to compete at Regional 4-H Day in Clay Center on March 28.

Show and Share Participants: Stetson Shrack (Holland Sunflowers), Belle Kuntz (Fragrant Hilltoppers), Madisyn Vahsholtz (Chapman Shamrocks), Judah Hedstrom (Holland Sunflowers), Luka Hedstrom (Holland Sunflowers), Summer Felbush (Holland Sunflowers).

Public Speaking: Top Purples: Carleigh Abeldt (Holland Sunflowers) and Josslyn DePew (Fragrant Hilltoppers). 1st Alternate Top Purple: Kathryn Gans (Solomon Wranglers). 2nd Alternate Top Purple: Autumn Felbush (Holland Sunflowers). Purple: Eyler Holt (Detroit Ramblers). Blue: Autumn Tracy (Peabody Achievers).

Project Talks: Top Purples: Kian Huebert (South Cottonwood) and Olivia Bourbon (Peabody Achievers). 1st Alternate Top Purple: Riley Schremmer (Detroit Ramblers). 2nd Alternate Top Purple: Case Huebert (South Cottonwood). Purple: Ruby Kohman (Willowdale). Blue: Cole Shaver (Goessel Goal Getters), Asher DePew (Fragrant Hilltoppers), Gunner Bohannon (Holland Sunflowers), Elise Norton (Fragrant Hilltoppers). Red: Silas Norton (Fragrant Hilltoppers), Clayton Thomas (Happy Hustlers).

Junior Demonstrations and Illustrated Talks: Top Purples: Reatta Lefert (Fragrant Hilltoppers) and Kinsey Acheson (Jolly Jayhawkers).

1st Alternate Top Purple: Eliza Unruh (Peabody Achievers). 2nd Alternate Top Purple: Axie Shrack (Holland Sunflowers). Purple: Hadley Haverkamp (Chapman Shamrocks), Jackson Jost (Lincolnvil Wide Awakes). Blue: Lorelai Kuntz (Fragrant Hilltoppers), Gabe Boyd (Detroit Ramblers), Andy Felbush (Holland Sunflowers), Cohen Abeldt (Holland Sunflowers). Red: Savannah Witt (Detroit Ramblers), Emmett Kuntz (Fragrant Hilltoppers), Evelyn Baxa (Happy Hustlers), Lawson Norton (Fragrant Hilltoppers), David Unruh (Peabody Achievers), Dean Felbush (Holland Sunflowers), Madelynn Olson (South Cottonwood), Rylee Harris (Chapman Shamrocks), Janessa Latzke (Navarre Boosters), Hadley Chase (Willowdale).

Senior Demonstrations and Illustrated Talks: Top Purples: Addison Acheson (Jolly Jayhawkers) and Matthew Stoffer (Fragrant Hilltoppers). 1st Alternate Top Purple: Jace Latzke (Navarre Boosters). 2nd Alternate Top Purple: Colten Abeldt (Holland Sunflowers). Purple: Amily Boden (Goessel Goal Getters). Blue: Roper Lefert (Fragrant Hilltoppers), Ruby Shaver (Goessel Goal Getters), Adeline Laughlin (Jolly Jayhawkers), Anna Holt (Detroit Ramblers). Red: Madelynn Norton (Fragrant Hilltoppers), Sophia Baxa (Happy Hustlers).

Instrumental Solo – Junior: Top Purple: Dodge Loucks (Willowdale). 1st Alternate Top Purple: Evelyn Baxa (Happy Hustlers). Purple: Andy Felbush (Holland Sunflowers), Olivia Bourbon (Peabody Achievers), Riley Schremmer (Detroit Ramblers). Blue: Maria Towery (Willowdale), Taylor Loucks (Willowdale), Ruby Kohman (Willowdale), Hadley Haverkamp (Chapman Shamrocks), Belle Kuntz (Fragrant Hilltoppers).

Instrumental Solo – Senior: Top Pur-

ple: Ava Hedstrom (Holland Sunflowers). First Alternative Top Purple: Autumn Felbush (Holland Sunflowers). Purple: Autumn Tracy (Peabody Achievers), Lorelai Kuntz (Fragrant Hilltoppers), Tanner Duerksen (South Cottonwood). Blue: Grace Meier (Goessel Goal Getters).

Vocal Solo – Junior: Blue: Madelynn Olson (South Cottonwood).

Vocal Solo – Senior: Top Purple: Autumn Tracy (Peabody Achievers).

Solo Acting – Senior: Top Purple: Rylee Thomas (Happy Hustlers).

Reading – Junior: Top Purple: Cora Hedstrom (Holland Sunflowers). 1st Alternative Top Purple: Dean Felbush (Holland Sunflowers). Purple: Riley Schremmer (Detroit Ramblers). Blue: Cooper Vahsholtz (Chapman Shamrocks), Cadence Towery (Solomon Wranglers), Emery Younkman (Jolly Jayhawkers), Branch Gans (Solomon Wranglers), Eliza Unruh (Peabody Achievers), Willa Jost (Lincolnvil Wide Awakes), Andy Felbush (Holland Sunflowers).

Reading – Senior: Top Purple: Autumn Felbush (Holland Sunflowers). Blue: Ava Hedstrom (Holland Sunflowers).

Skit: Top Purple: Autumn, Dean, Andy, and Summer Felbush (Holland Sunflowers). 1st Alternative Top Purple: Jace, Dodge, and Taylor Loucks (Willowdale).

More information about Chisholm Trail District 4-H youth development programs may be found online at https://www.chisholmtrail.k-state.edu/4_h/index.html or by contacting Jill Martinson in the Abilene office (785-263-2001) or Bret Toews in the Marion office (620-382-2325).

Registration opens March 1 for Walk Kansas Eight-week program encourages people to get out and move
By Pat Melgares, K-State Extension news service

MANHATTAN — Registration opens March 1 for the 2026 Walk Kansas program, an eight-week initiative offered by Kansas State University Extension designed to help participants build healthier habits through physical activity, nutrition and overall wellness.

The program runs March 22 through May 16 and is open to individuals and teams in Kansas and beyond.

“Walk Kansas is an eight-week health initiative,” said Sharolyn Jackson, state leader of K-State Extension’s Walk Kansas program. “It’s focused on physical activity, but it brings a lot more into the program than that. We also focus on wellness in general, on healthy eating, on managing stress and getting better sleep, all those things that factor into overall wellness.”

While Walk Kansas is primarily team-based, participants may also register as individuals. The new online system allows teams of any size, though four members is considered an ideal

number.

“A team of four is a great number because it’s a good size where you can encourage each other,” Jackson said. “But if you just have a team of two, that’ll work too. It will prorate your activity minutes and put everybody on a level playing field.”

Participants track minutes of activity or steps through the program’s online portal. The system automatically converts activity to miles, counting 15 minutes of activity as one mile or 2,000 steps as one mile.

Walk Kansas is built on the Physical Activity Guidelines for Americans, which recommend at least 150 minutes of moderate physical activity each week. Jackson describes moderate activity as working at a pace where a person can carry on a conversation, but not sing.

“It’s not just a leisurely stroll,” she said. “It’s picking up the pace a bit to get the heart rate going.”

The program also encourages participants to incorporate strengthening activities at least two days per week, such as resistance bands, light weights or body-weight exercises.

Beyond physical activity, Walk Kansas promotes healthy eating. Participants track fruit and vegetable intake through the online system, often discovering they eat fewer servings than they realized.

Weekly newsletters provide educational information in a blog format, including tips for increasing activity, managing stress and improving sleep. The program emphasizes a Mediterranean-style eating pattern and includes recipes aligned with each week’s nutrition message.

Webinars — recorded for later viewing — cover topics such as gut health, workplace relationships, fostering kindness and connection, increasing activity at work and communicating effectively with health care providers.

Jackson said organizers are placing additional emphasis this year on workplace participation. More than half of Walk Kansas teams historically have formed at worksites.

“We spend a lot of time at work,” Jackson said. “If you’re working toward a common goal or supporting each other, people feel better and are probably less inclined to miss work.”

She added that employers who promote wellness programs may see benefits such as improved productivity, enhanced morale and teamwork, reduced long-term health care and workers’ compensation costs, and improved employee retention.

Walk Kansas averages more than 4,000 participants statewide each year. There are no age limits; participants have ranged from young children to people in their 90s. Youth through high school may participate at no cost. The standard registration fee is \$10 per person, which covers access to the online tracking system and program materials.

Participants also may invite friends or family members from outside Kansas — even overseas — to join their teams.

“We’re just trying to get people to get up and moving whatever way they can,” Jackson said. “How can you build more movement into your day? Whatever little tips and tricks we can offer, we’ll provide those through Walk Kansas.”

More information and registration details are available at walkkansas.org.



Our Scholars Bowl Team did well at State yesterday. They were so fun to watch in action! They got out of pool play and advanced to finals where they placed 5th! Way to go! Team Members included: Anna Godinez Vinduska, Grayson Best, Fernando Paul Jimenez-Alfaro, Addison Bina, and Derrick Harms Coaches; Angela Basore and Tana Riffel

(Courtesy of USD 397)

DO YOU WANT A GRADUATION/SPORTS PRINTED EDITION?

This is our first year bring Digital for the Graduation/Sports edition. With this being said, I have been given permission to design a Graduation/Sports printed edition. I am SUPER EXCITED to be able to showcase our kids in our communities. However, I am only able to print IF I raise enough money to cover the cost of printing. So here is what I am offering....

2x2
\$50



2x4
\$75

1x2
\$30

SIGNATURE
\$20

This is also available for parents to put thier dedications in for thier students.

In the event I cannot get enough people to buy a sponsorship, we will still do a digital edition and sponsorship prices will be 50% less. I am hoping we can raise enough money to give the kids the recognition they deserve and the family members a keepsake.

Contact us by April 29th to support the printed Graduation/Sports Edition
Invoices will be Sent May 1st and Must be paid by May 15th to continue.

Contact us at dk.co.newstimes@gmail.com or call 785-524-4200 Wed-Fri 11am to 3pm.

SKILLS BUILD ON SKILLS

By: Van Yandell

John 21: 17 “He said unto him, Simon, son of Jonas, lovest thou me? Peter was grieved because he said unto him the third time, Lovest thou me? And he said unto him, Lord, thou knowest all things; thou knowest that I love thee. Jesus said unto him, Feed my sheep.”
 After teaching industrial arts and working as a carpenter for many years, I suppose I had sawdust flowing through my veins. The wood shop must have been my favorite area and that love carried over into my retirement years. A wood shop in a garage became my work area in which I continued to build furniture, cabinets and other items of walnut, cherry and maple. A woodland on the property provided trees to cut and haul to an Amish sawmill. Roy, the sawmill operator was an unusual sort. He worked barefoot and used a band saw. His work was absolute precision. I could not find as much as a thirty-second of an inch variance in thickness and widths. Normally there was one-thousand or more board feet of lumber in my drying building for my habit and the projects seemed to never find an end, which of course, I would not have wanted to happen. A high school boy from down the road would come by occasionally (most every day) and keep me company. I still see him from time to time and we reminisce about those days in

the wood shop. One day I was turning bed posts on a wood lathe. The project was a walnut, king-size poster bed. It sits in my bed room even now. My young friend asked me that day if I could show him how to do the work. My immediate response was “These skills are an accumulation of years of work, study and a lot of trial and error. So it probably wouldn’t be of any great benefit to you.” He was depressed over my response and went away head down and dragging his feet. Over the time, I had second thoughts. We all had to start somewhere; why not? A couple of days later he returned. Asking him what he had in mind to build, his response was “I dunno.” Finally the truth came out; he wanted to make a wooden heart for one of his girlfriends. I’m not sure how many he had and I dared not ask! Thinking he could not get into much trouble with a portable jig-saw, I gave him his first lesson. It was to draw a symmetrical design for the heart. Avoid making the radius of the curve too acute because the blade would not turn that sharp a curve. Clamping the nine inch square piece of cherry to a work bench, he began. After an extended period of time, he brought it to me for inspection. With a little touch up, he had a presentable heart. I’m sure it totally impressed his current

girlfriend. As the days and weeks passed, he used belt sanders (portable and bench), a band saw, a router and drills. He made his mother a cutting board and a wall shelf. Skills build on skills. If a woodworker learns simple cabinet construction, he/she can build a night stand. If one can build a night stand, he/she can build a dresser and a chest-of-drawers. If one can turn a rolling pin on a wood lathe, a poster bed is definitely in the future. New Christians are usually (or should be) introduced to Jesus’ last commandment before He ascended. Acts 1: 8 “But ye shall receive power, after that the Holy Ghost is come upon you: and ye shall be witnesses unto me both in Jerusalem, and in all Judaea, and in Samaria, and unto the uttermost part of the earth.” The power He was referring to was from the Holy Spirit (Spirit of God). Acts 2: 1-4 tells us of the giving of the Holy Spirit to the disciples. Any true believer-follower of the Lord Jesus has this power. A Christian should never feel that he/she is going into the world alone to teach others about Jesus and eternal life. God is with us and will give us words and motivation to inform others about His saving power (Matthew 28: 20). Just as skills build on skills in the wood shop, skills build on skills in our Christian life. Also our enthusiasm grows as well as incentive to share our

faith. In the leading scripture (John 21: 17) Jesus asked Peter “Do you love me?” We love Jesus because He first loved us. With this truth, should we not follow His commandment to “feed my sheep?” Skills building on skills include feeding lost and hungry sheep. Sheep are not particularly intelligent animals; they become lost rather easily. There are over five-billion people in this world that have not realized eternal salvation is by a faith based belief in Jesus, crucified and resurrected. This is not to mean those billions have limited intellect, but is to say they have never been told. Telling others is establishing a skill, a motivation and a burden for those without Christ. One does not have to be a carpenter to build; neither does one have to be a preacher or missionary to share their faith. We may not win our first encounter to Jesus but the courage to win the next will develop and our enthusiasm will grow. A personal testimony, a gift of a Bible, or a simple invitation to a church or a back yard Bible study is a good place to begin. I challenge you! Let your skills build on skills. Van Yandell is a retired Industrial Arts teacher, an ordained gospel evangelist and commissioned missionary. His email is vmy3451@gmail.com



Council Grove
Police Department

February 17th, 2026

PRESS RELEASE
CRIME: Narcotics Arrest

On February 14th, 2026, Officers from the Council Grove Police Department responded to the 600 block of West Main Street for a domestic disturbance. During the contact, probable cause was developed to apply for a search warrant. The search warrant was subsequently granted and executed. Cassandra Kline (Council Grove) was arrested for Possession of Methamphetamine with intent to distribute, Possession of Marijuana, Possession of drug paraphernalia, and Possession of a Prescription only drug without a prescription. Also arrested was Zachary Kline (Council Grove) for Violation of Protection Order, Possession of Meth with intent to distribute, Possession of Drug paraphernalia, Possession of Marijuana, and Possession of Prescription drug without a prescription. Both were booked into the Morris County Jail. The Morris County Sheriff’s Office assisted with the call.

ALL PERSONS ARE INNOCENT UNTIL PROVEN GUILTY

FOR PUBLIC RELEASE

CONTACT
Shawn Wangerin
Chief of Police
(620) 767-5200



Insurance
Commissioner Vicki Schimdt offers support after wildfires

Topeka, Kan. – Commissioner Vicki Schimdt is offering support to communities impacted by the wildfires around the state.

“If you have an issue with insurance, we want to know about it,” said Commissioner Vicki Schimdt. “The Department stands ready to help Kansans navigate the recovery process, file insurance claims, and work through any insurance issues.”

If you or someone you know is having trouble with an insurance claim, please contact the Kansas Department of Insurance’s Consumer Assistance Division for any claims-related questions or concerns by phone: 785-296-3071; by email at kdoic.complaints@ks.gov; or visit the Department online at insurance.kansas.gov.

The Department is coordinating outreach with the Kansas Division of Emergency Management to remain in contact with local authorities in the impacted counties.

Prairie Doc Perspective

“The Not-So Silent Struggle of Sleep Apnea”

By Andrew Ellsworth, MD

Take a moment to breathe. Close your eyes. Slowly inhale through your nose, pause, and gently exhale through your mouth. After a few steady breaths, you likely feel more relaxed and ready for the day. Now imagine plugging your nose and trying to breathe with your tongue pressed against the roof of your mouth, blocking the airway. You would quickly feel stressed and uncomfortable. Now imagine that happening over and over again, all night long. That is what occurs with obstructive sleep apnea. Obstructive sleep apnea happens when relaxed throat muscles and soft tissues collapse and block the airway during sleep. These temporary pauses in breathing—called apneas—cause lower oxygen levels. The brain senses the drop and briefly arouses the body to reopen the airway. This cycle can repeat dozens, even hundreds, of times per night. The result is fragmented sleep, low

oxygen, and a body that never truly rests. Sleep is when the body resets and restores itself. It supports immune function, heart health, metabolism, memory, mood, and emotional regulation. When sleep suffers, so does overall health. Poor sleep increases the risk of high blood pressure, heart disease, stroke, diabetes, cognitive decline, and even dementia. People who are chronically tired are also less likely to make healthy choices. The gold standard treatment for sleep apnea is CPAP—continuous positive airway pressure. A bedside machine delivers steady air through a mask, keeping the airway open during sleep. Some patients benefit from BiPAP, which provides different pressures when breathing in and out. When used consistently, these therapies can dramatically improve sleep quality, energy, focus, hormone balance, and cardiovascular health. Other treatments may

help in selected cases. Weight loss, dental appliances, side sleeping, and certain surgeries can reduce airway obstruction. For patients who cannot tolerate CPAP, hypoglossal nerve stimulation (often known by the brand Inspire) is an option. This implanted device stimulates the nerve controlling the tongue, helping maintain an open airway during sleep. Although sleeping with a mask may not sound appealing at first, some people feel better quickly and do well with it. Others improve once they are used to it. It often takes patience—trying different masks, adjusting pressure settings, or adding humidification. With proper support and follow-up, most people adapt well. The benefits of treating sleep apnea far outweigh the risks of ignoring it. Restful sleep improves energy, protects the heart and brain, and enhances overall quality of life. If you or someone you love snores loudly,

stops breathing during sleep, or feels tired despite a full night’s rest, consider visiting your medical provider. Restoring healthy breathing at night may be one of the most important steps toward better health.

Dr. Andrew Ellsworth is a Family Medicine Physician at Avera Medical Group Brookings in Brookings, SD. He serves as one of the Prairie Doc Volunteer Hosts during its 24th Season providing Health Education Based on Science, Built on Trust. Follow The Prairie Doc® at www.prairiedoc.org, Facebook, Instagram, YouTube, and Tik Tok. Prairie Doc Programming includes On Call with the Prairie Doc®, a medical Q&A show (most Thursdays at 7pm on YouTube and streaming on Facebook), 2 podcasts, and a Radio program (on SDPB, Sundays at 6am and 1pm).

Applying for LIEAP?

The Low Income Energy Assistance Program (LIEAP) can help eligible households pay a portion of their primary home heating costs by providing a one-time per year benefit. LIEAP can help restore or maintain electricity, natural gas, propane and other home heating bills. The application period begins Jan. 20, 2026, at 8 a.m. and ends March 31, 2026 at 5 p.m.

Apply online at dcfapp.kees.ks.gov or get help in-person at an upcoming LIEAP event:

Feb. 25, 2026
11 a.m. to 4 p.m.

Herington City Library
102 S Broadway St.
Herington, KS 67449

See the full schedule of LIEAP events at LIEAP.dcf.ks.gov

Please bring copies of the following information:

- Proof of income (earned and unearned) for anyone living in the residence.
- Copy of all fuel bills (gas, electric, propane, etc.)
- Proof of child support payments received or the court order.
- If in subsidized housing, provide a copy of your rental agreement.
- If your primary heating costs are included in your rent, provide a copy of your rental agreement.

Applications accepted
**Jan. 20, 2026—
March 31, 2026**

Applications **must** be received by DCF by 5 p.m. on March 31, 2026.

*Other information may be requested as needed.
**If your utility bills are in the landlord’s name, a copy of the lease agreement must be provided.



Herington High School students have the opportunity to take a RefReps class and obtain KSHSAA certification to referee. Reid Griffiths took the opportunity and officiated his first MS wrestling matches at our home wrestling meet tonight. Great job Reid!
(Courtesy USD 487)

Award Recipients

Congratulations to the 2025 award recipients. These honorees re commitment to strengthening our local communities.



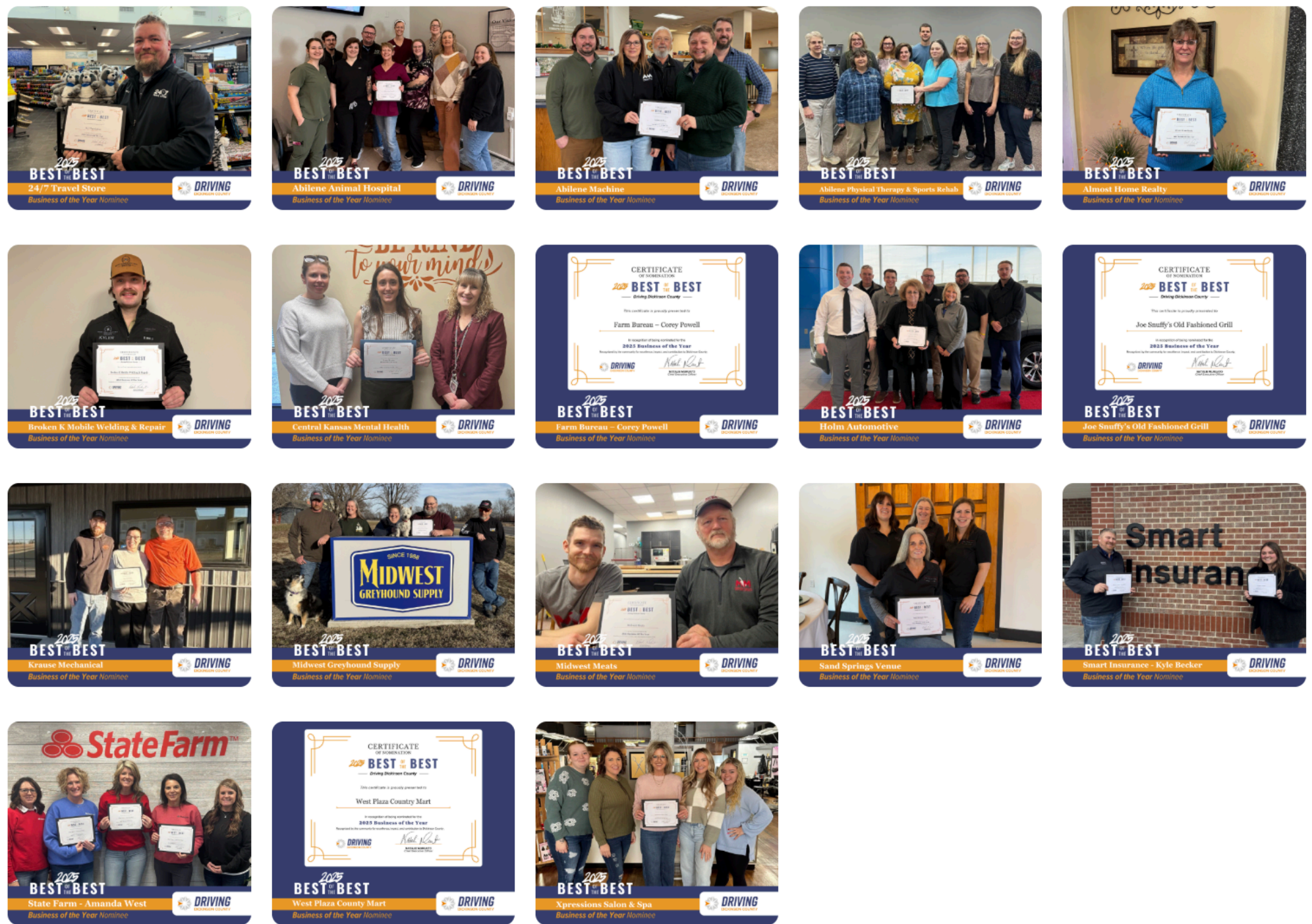
Best Hospitality Nominees – 2025 Best of the Best
 Great hospitality goes beyond service — it creates experiences. From memorable meals and cozy stays to welcoming atmospheres and exceptional care, our Best Hospitality nominees are setting the standard for what it means to make guests feel right at home in Dickinson County.

These businesses don't just serve — they connect, host, and create moments worth remembering. Join us in celebrating the restaurants, venues, and hospitality leaders who help make our communities special. (Courtesy DKEDC)

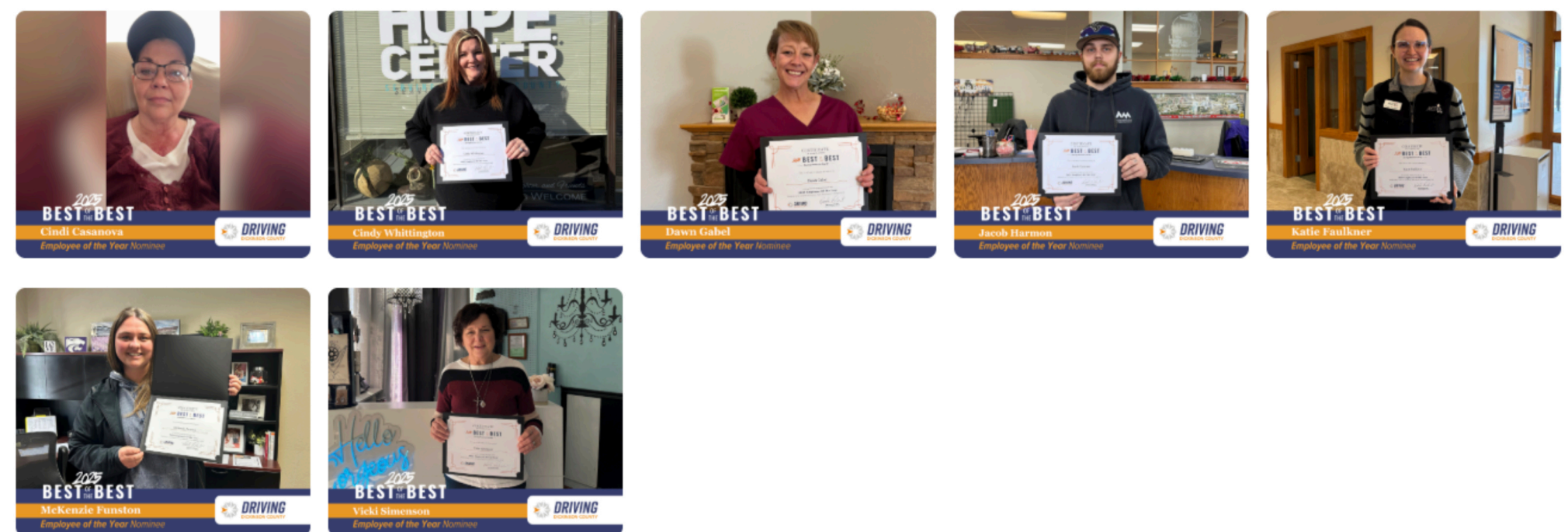
Of the Year Nominees

The "of the Year" honors represent DKEDC's highest level of recognition, celebrating exceptional leadership, impact, and contribution to Dickinson County.

BUSINESS OF THE YEAR



EMPLOYEE OF THE YEAR



COMMUNITY CATALYST OF THE YEAR



YOUNG ENTREPRENEUR OF THE YEAR



Best of the Best Nominees

These awards recognize excellence across key business sectors and service areas throughout Dickinson County.

BEST PROFESSIONAL BUSINESS



BEST NON-PROFIT / GOV'T ORG.



BEST CUSTOMER SERVICE



BEST HOSPITALITY BUSINESS



BEST RETAIL BUSINESS



BEST STOREFRONT



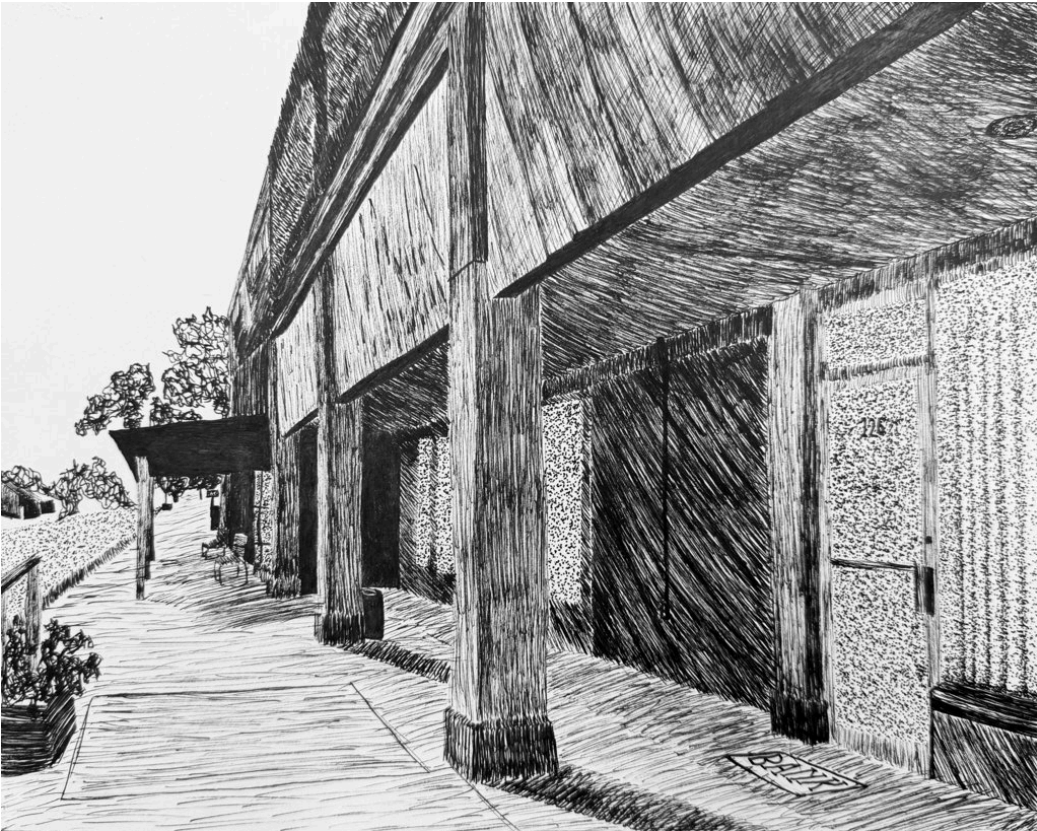
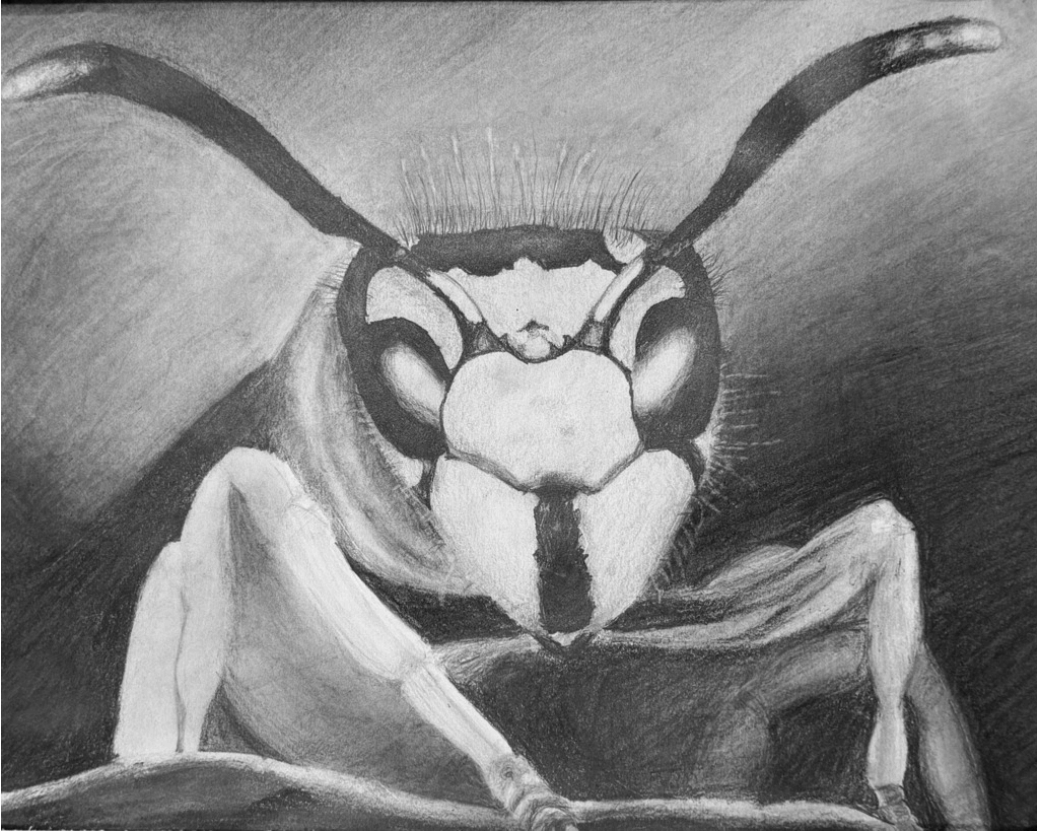
BEST TRADE BUSINESS



Congratulations to the Chapman High School who competed at the Bennington Forensics Tournament!

- Bo Rothchild & Braxton Prosser - 1st place IDA & qualifying for state champs**
- Aiden Hall & Cyrus Wyma - 2nd place IDA & qualifying for state champs**
- Emery Wright - 2nd place HSA & qualifying for state champs**
- Liberty Cuevas & Kyah Bell - 4th place IDA**
- Emery Wright - 4th place in Impromptu**

(Courtesy of USD 473)



HERINGTON, KS – Creativity was on full display this month as student-artists from Herington High School and Middle School showcased their talents at the annual Dickinson County Student Art Show. Held at the Heritage Center in Abilene, Kansas, from February 8–16, 2026, the exhibition featured a diverse range of media, from intricate sketches to bold sculptures.

The week-long event brought together the artistic talent from across the county, providing students with a professional platform to share their artistic skills with the community. Herington’s art department was well-represented, with 25 students displaying their artwork.

The following Herington students were recognized by the judges for their exceptional work:

- Anastaria 7 Technicolor Tubes 3rd place colored pencil**
- Lillian 8 Intense Gaze HM graphite drawing**
- Jesse 12 Lost in the Sea of Darkness HM scratchboard**
- Raquel 12 Summer Days HM mixed media**
- Sarah 11 Another View of Hope HM pen & ink**



TOPEKA (KSNT) – State wildlife officials are dropping fishing fees in Kansas for two days and letting people get into state parks for free in the summer of 2026.

The Kansas Department of Wildlife and Parks announced in a press release that people can take advantage of free fishing days and free entrance days to all 28 state parks this year. While some fees or limitations remain in effect, people in Kansas can use these opportunities to explore scenic locations across Kansas and hit the lake with friends to go fishing.

KDWP spokeswoman Laura Clawson said the state's Free Fishing Days will be on Saturday, June 6 and Sunday, June 7. While people can go fishing without the need to have a state fishing license on these days, they will still need to obey any established length and creel limits.

Where are the best places to go 'shed hunting' in Kansas? Clawson said that all state parks in Kansas will also be free to enter on Wednesday, April 22. However, camping fees will still apply to visitors.

"These free days are a great opportunity for Kansans and visitors alike to get outside and enjoy Kansas' natural resources," said KDWP Secretary Chris Kennedy. "Whether you're fishing, hiking, picnicking, or simply

spending time outdoors, we hope these days encourage people to connect with nature and with each other."


Kennedy has also designated several Free Entrance Days to Kansas state parks on different dates from April to October this year. Many of these days line up with local events and programs to encourage people to visit one or more of the state parks Kansas has to offer.

- April 29 – Tuttle Creek State Park
- May 2 – El Dorado State Park
- May 16 – Milford State Park
- June 6 – Prairie Dog State Park
- June 13 – Cedar Bluff State Park
- June 13 – Historic Lake Scott State Park
- June 20 – Wilson State Park
- July 3 – Cross Timbers State Park
- July 11 – Little Jerusalem Badlands State Park
- Sept. 12 – Sand Hills State Park
- Sept. 13 – Lovewell State Park
- Sept. 13 – Webster State Park
- Sept. 19 – Clinton State Park
- Sept. 19 – Hillsdale State Park
- Sept. 26 – Cheney State Park
- Sept. 26 – Crawford State Park
- Sept. 26 – Fall River State Park
- Oct. 10 – Meade State Park
- Oct. 17 – Eisenhower State Park
- Oct. 24 – Kanopolis State Park
- Oct. 24 – Perry State Park
- Oct. 24 – Pomona State Park

WE WANT YOUR INPUT ON DESIRED CHARACTERISTICS OF THE NEXT SUPERINTENDENT OF SCHOOLS FOR USD 487 HERINGTON!!!

Focus Group meeting

JOIN US MARCH 2ND AT 5:00 PM IN THE ELEMENTARY FLEX LAB TO PROVIDE INPUT TO THE SEARCH COMMITTEE




We love our readers!

Thank you for your continued support.

1	ROCK CREEK	45		
	2/23 @ ROCK CREEK			
8	ABILENE	12	ROCK CREEK	
	2/23 @ MARYSVILLE		2/26 @ FORT RILEY: 4:30PM (MAIN GYM)	
4	MARYSVILLE	25	WAMEGO	
5	WAMEGO	26	2/26 @ FORT RILEY: APPROX. 5:45PM (MAIN GYM)	
2	FORT RILEY	39		
	2/23 @ FORT RILEY		FORT RILEY	
7	CONCORDIA	29	2/26 @ FORT RILEY: 4:30PM (AUX GYM)	
3	CLAY CENTER	34	CLAY CENTER	
	2/23 @ CLAY CENTER			
6	CHAPMAN	27		

7TH GRADE BOYS BASKETBALL

NCKL TOURNAMENT

3RD/4TH PLACE GAME WILL BE PLAYED IN AUX GYM @ APPROX. 5:45PM

1	CHAPMAN	42		
	2/23 @ CHAPMAN			
8	FORT RILEY	20	CHAPMAN	
	2/23 @ CONCORDIA		2/26 @ ABILENE: 4:30PM (AHS MAIN GYM)	
4	CONCORDIA	38	CONCORDIA	
5	ROCK CREEK	31	2/26 @ ABILENE: APPROX. 5:45PM (AHS MAIN GYM)	
2	ABILENE	66		
	2/23 @ ABILENE		ABILENE	
7	CLAY CENTER	34	2/26 @ ABILENE: 4:30PM (AHS GYM B)	
3	WAMEGO	38	WAMEGO	
	2/23 @ WAMEGO			
6	MARYSVILLE	36		

8TH GRADE BOYS BASKETBALL

NCKL TOURNAMENT

3RD/4TH PLACE GAME WILL BE PLAYED IN AHS GYM B @ APPROX. 5:45PM