

Subscription Rates
 \$66 Local Print/Digital Combo - \$77 Out of State for both | \$44 Digital Only
 Subscriptions can be mailed to PO Box 67, Lincoln, KS 67455; dropped in the blue drop box at the office; emailed; or called in Wed-Fri 11am to 3 pm



The Official Newspaper for Lincoln County Kansas

LINCOLN SENTINEL-REPUBLICAN

Volume 139 No. 7

www.lincolnsentinel.com

Wednesday, February 11, 2026 \$1.25

ALL ADVERTISING AND NEWS CONTENT DUE BY 12:00 P.M. FRIDAY TO: LINCOLNKSNEWS@GMAIL.COM | 141 W. LINCOLN AVE. PO BOX 67 LINCOLN, KS 67455 | VOICEMAIL - 785-524-4200

LCIC bierock fundraiser a big success

*By Jyll Phillips,
Lincoln-Sentinel*

The Lincoln Center Improvement Committee (LCIC) held a bierock fundraiser at Lincoln's Shared Kitchen Saturday, February 7.

LCIC committee members met at the Shared Kitchen at 9 a.m. and within four hours, the team of seven produced 324 bierocks, handmade, individually wrapped and ready for pick up.

The bierocks were sold through pre-orders on the LCIC Facebook page or by contacting a committee member.

All proceeds will go toward the Downtown Lighting Project.

LCIC members include Lisa Feldkamp, Carly Errebo, Shelby Errebo, Chris Gerbitz, Vicki Hook, Marsha Kraft, Breanna Brown and Jyll Phillips and regular volunteer Terrance Kraft.

LCIC member Lisa Feldkamp relived earlier days when she worked in food service. (Courtesy Photo)



FFA to host Pancake Feed



Lincoln's FFA Chapter is hosting a fundraising Pancake Feed at Lincoln's Shared Kitchen February 21, 2026. Pancakes will be served from 7 a.m. to 11 a.m. at 109 W. Lincoln Avenue.

The proceeds from this fundraiser will go to support various FFA activities such

as hands-on field trips, meetings, etc.

FFA is a dynamic youth organization that changes lives and prepares members for premier leadership, personal growth and career success through agricultural education.

FFA develops members' potential and helps them discover their talent through hands-on experiences, which give members the tools to achieve real-world success.

Members are future farmers, chemists, veterinarians, government officials, entrepreneurs, bankers, international business leaders, teachers and premier professionals in many career fields.

FFA is an intracurricular student organization for those interested in agriculture and leadership. It is one of the three components of agricultural education.

The official name of the organization is the National FFA Organization. The letters "FFA" stand for Future Farmers of America. These letters are a part of the organization's history and heritage that will never change.

Founded by a group of young farmers in 1928, FFA is for students who want to engage in agriculture and aspire to be farmers, teachers, doctors, scientists, business owners and more. For this reason, the name of the organization was updated in 1988 after a vote of national convention delegates to reflect the growing diversity and new opportunities in the industry of agriculture.

FFA continues to help the next generation meet those challenges by helping its members to develop their own unique talents and explore their interests in a broad range of agricultural career pathways. We are the Future Farmers of America, and we are the Future Biologists, Future Chemists, Future Veterinarians, Future Engineers and Future Entrepreneurs of America, too.

Today, the National FFA Organization remains committed to the individual student, providing a path to achievement in premier leadership, personal growth and career success through agricultural education. Our members live the motto Learning to Do, Doing to Learn, Earning to Live and Living to Serve. FFA members rise to the challenge of service embracing members of all walks of life united through FFA.

Museum Needs Helping Hands for Exhibit Updates

Dana Walters, Director of the Lincoln County Historical Society is in need of volunteers with a little bit of muscle.

In an attempt to update some exhibits Walters says she has large pieces that need to be moved and is actively seeking volunteers who can handle the weight.

Wednesday, February 11 from 5-7 p.m. and Monday, February 16 from 5-7 have been organized as work nights for this activity.

This is a good opportunity for strong students to acquire community service hours.

The museum also has a position open for a paid summer intern, age 16 and up. Applicants must sign up at <https://next-generation.secure-platform.com/site> no later than March 1.

Sylvan-Lucas Celebrates Sweetheart Royalty

Each year Sylvan-Lucas High School holds Sweetheart activities including a dance and the crowning of the Sweetheart Queen and King.

Candidates for Sweetheart Queen included Montana Griffiths, Breckyn Gosvener and Olivia Crawford. Candidates for Sweetheart King included Braden Nelson, Casey Janssen and Caleb Dlaball.

The crowning ceremony took place after the Varsity boys game in the high school gym. Olivia Crawford and Braden Nelson were crowned Queen and King.

The Sweetheart dance was held in the high school commons area immediately following the crowning, continuing until 11:30 p.m.

This event was organized by the Freshman class and their sponsor, Mrs. Linda Haring.

Olivia Crawford and Braden Nelson were named Sylvan-Lucas Sweetheart Queen and King during Friday's crowning ceremony. (Photo by Lori Spear)



Four Advance to Tipton in Knights Free Throw Contest

Local youth showcased their free-throw skills at the Knights of Columbus Free Throw Contest, earning top finishes across multiple age divisions. (L-R) Kaitlyn Heinze, Olivia Borst, Jordy Metz, and Coy Rathbun advanced to the next level of competition and will represent the area at Tipton on Sunday. (Photo by Becky Rathbun)



Second Saturday is February 14

Second Saturday in Lincoln is just in time for last minute Valentine Day shopping! Several local businesses have joined in the fun and have special savings to offer those who shop small and local.

Mity Mart will take \$1 off the cost of a full Hunt's Brothers Pizza between 6 a.m. and 8 p.m. on Second Saturday only.

From 9 a.m. to noon Patterson's Health Mart is offering a 40% discount on Greenleaf Flower Diffusers.

Seirer's Clothing is celebrating Second Saturday with their Sip & Shop from 10 a.m. to 4 p.m. Qualifying orders will receive a free Dionis Goat Milk Hand Cream.

Lincoln Art Center will be open from 9 a.m. to noon. This is the perfect time to purchase a \$5 raffle ticket to win a Kathryn Perney quilt!

Beginning February 14 and continuing through February 28, Family Hair Flair has \$5 off a facial. Schedule your appointment at 785-524-5080.

Last, but certainly not least, KC Quilting Co. has a Second Saturday special. On Saturday only, customers can take 20% off regular priced Valentine-themed fabric.

So local shoppers, pick up a Valentine for someone special and another one for yourself by staying close to home to do your Second Saturday shopping.

February 13 is National Pancake Day



National Pancake Day is the perfect excuse to slow down, stack them high, and enjoy one of life's simplest comforts. Whether you like them dripping with maple syrup, loaded with fruit, or dotted with chocolate chips, pancakes have a way of bringing people together around the table. They've been a breakfast favorite for centuries, showing up in cultures all over the world in one form or another. So this week, flip a few on the griddle, invite someone to join you, and remember that the best mornings usually start with warm pancakes and good company.

Cash Grain

Corn.....	\$3.65
Milo.....	\$3.30
Soybeans.....	\$10.00
Wheat.....	\$4.64

*Cash prices courtesy of
Ag Mark*

Community Calendar

Thursday, February 12

Lincoln: 2:30 pm Valentine's Cookie Decorating @ Lincoln Library
 USD 298: LINCOLN FORENSICS INVITATIONAL; 2:30 pm School Dismissed; 3:45 pm JH Scholars Bowl @ Sylvan
 USD 299: JH Scholar Bowl @ Sylvan; Speech & Drama Tourney @ Lincoln; 6:15pm Randi -Volleyball Practice

Friday, February 13

USD 298: 9:00 am Jr ASVAB Testing; 4:00 PM HS BB VS ROCK HILLS - LIL CHEER NIGHT
 USD 299: Girls Wrestling Regional @ Trego (Day 1/2); Harlee- Bethel softball signing during seminar; 4pm HS BB vs. Lakeside @ Sylvan

Saturday, February 14

Lincoln: Second Saturday; 10 am Sip & Shop @ Seirer's Clothing; 6 pm Trivia Night @ St Patricks CYO
 USD 298: HS STATE SCHOLAR'S BOWL @ LINCOLN; 11:30 am HS JV TOURNAMENT @ WASHINGTON COUNTY
 USD 299: Girls Wrestling Regional @ Trego (Day 2/2); HS Scholar Bowl State Competition @ Lincoln; Speech & Drama Tourney @ Norton; 8am HS BB (JV Boys) @ Washington

Sunday, February 15

Monday, February 16

USD 298: No School; 4:00 PM HS BB VS CANTON-GALVA-SENIOR NIGHT; SENIOR NIGHT-BASKETBALL & CHEER
 USD 299: 5pm HS BB JV (Boys & Girls) vs. Great Bend Homeschool @ Sylvan

Tuesday, February 17

USD 298: 4:00 PM HS BB @ THUNDER RIDGE
 USD 299: Parent's Night (Basketball, Wrestling, Cheer; 4pm HS BB vs. Osborne; 5pm FFA Chili Feed

Wednesday, February 18

USD 299: FFA District Officer Interview @ Minneapolis

Commodity Distribution held the third Wednesday every other month at the Lincoln Senior Center. (September, November, January, March, May, July)

Lincoln County Historical Society meets third Wednesday of each month @ 5 p.m.; Lincoln County Historical Museum is open Thursdays, Fridays, Saturdays. Call 202.744.9041.
 LCEDF meets the second Wednesday of each month in the Courthouse basement. Call 524-8954 for meeting time.
 The Lincoln County Commission meets each Monday, and the last working day of the month, at the courthouse.



Sweetheart Candidates from Sylvan-Lucas High School

The candidates for Sweetheart Queen included Montana Griffiths, Breckyn Gosvener, and Olivia Crawford. The candidates for Sweetheart King are Braden Nelson, Casey Janssen, and Caleb Dlaball. The crowning ceremony took place shortly after the Varsity boys game in the high school gym with Olivia Crawford and Braden Nelson being crowned. (courtesy photo)

Post Rock Extension District Offers Local Food Producer Workshop

A Local Food Producer Workshop, designed to support farmers' market vendors and managers—as well as individuals interested in selling food products directly to consumers—will be held on March 10 at Fort Hays Tech North Central in Beloit. The course is from 9:00 a.m. to 4:00 p.m., with registration starting at 8:30 a.m., at the Fort Hays Tech North Central Campus, Student Union, located at 3033 US-24, Beloit, KS 67420. The workshop will cover topics such as food safety, egg sales regulations, meat and poultry sales, navigating food sales tax, and a producer panel featuring several successful local food businesses. The keynote presentation will be from C&C High

Tunnel Farms, titled "From Tunnel to Table: Finding Your Niche in Specialty Crop Production." Local Food Producer workshops are an opportunity for producers and small food businesses to learn more about selling their products. Participants can connect with other producers and learn from their peers to improve their business success. The Kansas Department of Agriculture's weights and measures program will also offer free scale certification at the workshops for attendees. Registration for the workshops is now open and is \$25 per participant. Registration and more information are available on the K-State Extension Local Foods website or by calling the Beloit Extension

Office at 785-738-3597. The workshop will feature an optional training course for the Kansas Senior Farmers Market Nutrition Program at the end of the day, starting at 3:15 p.m. This training will certify producers to be able to accept checks from the program at their booths at local farmers markets. The Local Food Producer Workshops are regional workshops held across the state each year. The other 2026 workshop locations include Olathe, Hutchinson, Holton, Dodge City, Oakley, and Parsons. If you have any questions about the workshop or would like to register, please stop by your local Extension Office or call the Beloit Extension Office at 785-738-3597.



Monday, February 16
 Biscuits & Gracy, Hashbrowns. Fruit & Milk

Tuesday, February 17
 Cheeseburger w/Bun, Roasted Potatoes, Peas, Appricots & Milk

Wednesday, February 18
 Fish, Baby Bakers, Coleslaw, Fruit, Roll & Milk

Thursday, February 19
 Chicken & Rice Casserole, Buttered Peas & Carrots, Fruit Cocktail, Roll & Milk

Friday, February 20
 Baked Fish, Potato Wedges, Broccoli, Pineapple Tidbits, Bread & Milk

*Menu is subject to change.
 Call 785-524-4738 before 9:30 a.m. to reserve a lunch.
 The suggested donation for people over 60 or with current paperwork \$4.00. For people without paperwork or under 60, meals are \$7.00, mandatory.*

PRAIRIE DOC BY JILL KRUSE, DO

Spring into Seasonal Allergies

The groundhog may have seen his shadow, but Spring will be here soon. While many of us look forward to warmer days and blooming flowers, those who suffer from seasonal allergies know that the return of grass, budding trees, and blooming flowers can lead to more sneezing than smiles. Welcome to the Spring allergy season. If your seasonal allergies seem to be getting worse each year, it is not in your head. A Study from the National Academy of Sciences in 2021 found that over the last 30 years the North American pollen allergy season has increased by approximately 20 days. Pollen concentrations have also risen 21%. The Spring tree pollen season has been starting earlier and the Fall ragweed season has been ending later. Seasonal allergies can develop at any time in one's life. The most common risk factor for developing seasonal allergies is family history. If have family members with allergies, you have an increased risk of developing them as well. Seasonal allergies are the sign of an overactive immune system that has mistakenly identified harmless substances, like pollen, as dangerous threats to the body. This triggers an

inappropriate defense response that leads to the common symptoms of allergies like runny nose, congestion, watery eyes, itching, and sneezing. The immune system is trying to fight pollen like it would fight a cold. This is why it can be difficult to differentiate between allergies and illness. There are a few ways to help decrease the risk of children developing allergies. Several studies have shown that children who visit a farm in their first year of their life or have furry pets have a lower risk of allergies. In that first year of life, the immune system is busy trying to figure out what things the body needs to defend against and what things are safe to ignore. The environment on the farm has so different allergens, that it allows the immune system to become tolerant of the harmless pollen and animal dander. However, once someone has allergies, and the immune system is sensitive to these substances, further exposure to allergens that are on a farm will not help. It will just make the allergy sufferer more miserable. The first line over-the-counter treatment for seasonal allergies is intranasal corticosteroids such as Fluticasone (Flonase), Mometasone (Nasonex), and Budesonide (Rhi-

nocort). These nasal sprays have been shown to be more effective than over-the-counter oral antihistamines such as Loratidine (Claritin), Fexofenadine (Allegra), and Cetirizine (Zyrtec). If the spray does not give adequate control, then adding an oral antihistamine can help. If these medications are not effective, then seeing an Allergist is the next step to enjoying everything that comes with April showers and May flowers. The groundhog says we have six more weeks to prepare for Spring. Regardless of when it comes, everyone can enjoy Spring if they understand seasonal allergies and how to treat them. Dr. Jill Kruse is a hospitalist at the Brookings Health System in Brookings, SD. She serves as one of the Prairie Doc Volunteer Hosts during its 24th Season providing Health Education Based on Science, Built on Trust. Follow The Prairie Doc® at www.prairiedoc.org, Facebook, Instagram, YouTube, and Tik Tok. Prairie Doc Programming includes On Call with the Prairie Doc®, a medical Q&A show (most Thursdays at 7pm on YouTube and streaming on Facebook), 2 podcasts, and a Radio program (on SDPB, Sundays at 6am and 1pm).

DENMARK HALL PANCAKE SUPPER

Come spend the evening with us and enjoy delicious pancakes, whole hog sausage, scrambled eggs, homemade pies, and drinks.

Free Will Donation
 Proceeds will be used for building repairs & upkeep.

Saturday, February 21, 2026
 4:30 – 7:00 p.m.

SIP & SHOP

FEBRUARY 02/14/26 10am-4pm

ORDERS OF \$75+ WILL RECEIVE THEIR CHOICE OF **FREE** DIONIS GOAT MILK 1oz. HAND CREAM *One Day Only. All Sales Final

GIVEAWAY: Your Choice of Two Stonewall Kitchen Items! *In-Store Only. No Purchase Required

SERVING Valentine's Charcuterie Board & Wine

SEIRER'S CLOTHING (785) 524-4752 143 W Lincoln Ave Lincoln Center, KS 67455

IN STORE (785) 524-4752 143 W Lincoln Ave Lincoln Center, KS 67455 Mon-Fri Sat 10am-6pm 10am-4pm

ONLINE shopseirers.com 24/7 Follow Us On Facebook & Instagram

COFFEE BAR Enjoy a Coffee, Caffe Latte, Cappuccino, Latte Macchiato, Mocha, Flat White, Americano, and more - hot or iced!

3RD ANNUAL ST. PATRICK CYO FUNDRAISER

Trivia Night Valentine Edition

FEBRUARY 14 6:00 PM
 Catholic Parish Hall

\$35 per person \$65 per couple \$180 per table of 6

Pre-order a carryout meal for \$15

RSVP to 913-424-8408 or saintpatrickCYO@gmail.com

THANKS to Our Readers!

Your subscription helps support the future of journalism.

Contact Information: Lincoln Sentinel-Republican

lincolnksnews@gmail.com • Phone 785-524-4200

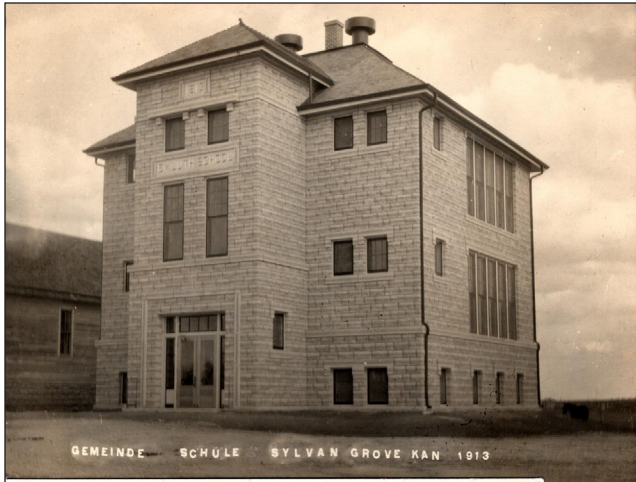
Donations needed to help restore historic 1913 school in Sylvan Grove

Mark February 15 on your calendars. It is a day to give back to the area and to hardworking ancestors who built our towns. Drive over to the Bethlehem Lutheran Church in Sylvan Grove and enjoy a pancake, egg, and sausage meal, complete with homemade pies. Come anytime between 11 a.m. and 7 p.m.

All donations go toward replacing the 50 failing windows in the 1913 Bethlehem Lutheran School to preserve the building and make it possible to continue to offer community Midweek classes and other events. It

is a costly project, but donations have already poured in covering 50% of the needed funds. The church is committed to restoring this building to its original beauty. The school will also be open for free tours that day.

Come step back in time and visit this 3-classroom school, set up much as it was on the last day of grade school. If you cannot come visit on the 15th, but would like to support the project, donations may be mailed to Bethlehem Lutheran Church, 308 N Indiana Ave, Sylvan Grove, KS 67481.



CDBG Road Show coming to Beloit to highlight Community Development Funding Opportunities

BELOIT, KS — The North Central Regional Planning Commission (NCRPC), based in Beloit, Kansas, is partnering with the Kansas Department of Commerce to host a Community Development Block Grant (CDBG) Road Show to help communities learn about CDBG funding opportunities available to support local improvement projects.

The first CDBG Road Show will take place in the North Central region on February 24, 2026, from 10:00 a.m. to noon, at the Fort Hays Tech North Central Conference Room in the Severance Student Union on the Beloit Campus, located at 3033 U.S. Highway 24 in Beloit. The Road Show will continue at six additional locations across Kansas over the following month. For more information, please visit www.kansascommerce.gov/cdbg/roadshow/.

The CDBG Road Show will provide an overview of current CDBG funding programs, guidance on developing strong and competitive applications, and opportunities to connect with resources and regional partners. The Kansas Department of Commerce CDBG

team will discuss eligible project types, application requirements, and funding opportunities related to Community Facilities, Housing, Water and Sewer Infrastructure, and other programs. Time will also be allotted for project planning discussions and questions with Commerce and NCRPC staff.

The event is free and open to the public and will be especially relevant for local government officials, economic development organizations, engineers, architects, local project champions, and others involved in community improvement projects.

Pre-registration is requested. To register for the CDBG Road Show, visit <https://forms.gle/LHJ4Z-2wkJU38vE3SA>.

Following the CDBG Road Show, NCRPC invites attendees and other regional stakeholders to participate in a brief strategy session focused on shaping the region's economic development priorities for the next five years. This session will help inform the development of the region's Comprehensive Economic Development Strategy (CEDS), which is currently underway. The

strategy session will include a complimentary lunch from noon to 12:30 p.m. and will conclude at 2 p.m. Participants may attend the morning Road Show, the afternoon strategy session, or both.

To register for the NCRPC strategy session, visit <https://forms.gle/cgBtycUEQMnveeq98>. For questions about the CDBG Road Show or the NCRPC strategy session, email communications@ncrpc.org. About the NCRPC:

The North Central Regional Planning Commission is a comprehensive planning and development organization serving a 12-county region in North Central Kansas. Several of its programs and services also extend into much of Kansas. For more information about the NCRPC, visit www.ncrpc.org.

About the Kansas CDBG Program: The Kansas Community Development Block Grant program provides funding to cities and counties to improve the lives of low- and moderate-income Kansans. Administered by the Kansas Department of Commerce, the program supports projects in housing, community facilities, and economic development.



BETHANY CHURCH
Eight miles north, six miles west and one mile north of Lincoln
Sunday School @ 9:45 am
Worship Service @ 11:00 am
Evening Service @ 7:00 pm

BETHLEHEM LUTHERAN CHURCH LC-MS
Pastor Christopher Craig
Sylvan Grove, Kansas
Sunday School following Worship
Sunday Worship @ 10:30 am

BEVERLY COMMUNITY CHURCH
www.beverlycommunitychurch.org
Pastor Toby Flaming
Sunday School @ 9:30 am
Morning Worship @ 10:45 am

CENTRAL CHRISTIAN CHURCH
Sunday School @ 9:30 am
Worship Service @ 10:30 am
Nursery available during service
Light Keepers Wed. @6:30 grades 6-12
Men's Prayer Breakfast, 7am @ The Cube

CULVER METHODIST CHURCH
Pastor Demerle Eckart
401 Main Street, Culver, Ks
Sunday Worship @ 9:30 am
Saturday Coffee @ 8-10 am

DENMARK EVANGELICAL LUTHERAN COMMUNITY CHURCH, ELCA
Worship Service @ 10:30 am

FAITH BAPTIST CHURCH
Pastor Jonathan Schale
Lincoln Park Manor @ 9:30 am
Bible Study @ 10:30 am
Worship Hour @ 11:00 am
Afternoon Worship @ 2:00 pm
Wed. Bible Study @ 7:00 pm

FIRST BAPTIST CHURCH
Pastor Carolyn Allen, Barnard
Morning Worship @ 11:00 pm

GRACE CHAPEL-HUNTER
Pastors Kaye & Jeff Metzler
Worship Service @ 9:00 am

LINCOLN COMMUNITY CHURCH
www.lincolncommunitychurch.org
Pastor Steven Rohn
Sunday School @ 9:30 am
Worship Service @ 10:30 am
Women of Grace.Wed. @ 5:30 pm
To rent the cube call Michael Pickering 785-488-7049.
Sunday Evening Service @ 6:30
Adventure Club Wed. 6pm - 7pm
Ages 3-12

LINCOLN PARK MANOR CHAPEL
Morning Worship @ 9:30 am
Afternoon Worship @ 2:30 pm

LINCOLN UNITED METHODIST
Worship Service @ 10:30 am
Alternate Pastor & Lay Leaders provide Communion

PRESBYTERIAN CHURCH
Sylvan Grove, Kansas
Sunday School @ 10:00 am
Church @ 11:00 am

ST. JOHN LUTHERAN CHURCH
Pastor Don Haselhuhn
Lincoln, Kansas
Two and one-half miles south of Lincoln on Highway 14
Sunday/Bible School...9:30 am
Worship Service.....10:30 am

ST. PATRICK'S CATHOLIC CHURCH
Father Mark Wesely, Lincoln
Rectory phone: 785-524-4823
Email: stpat327@gmail.com
Sunday Mass @ 11:00 am
Sunday CCD Classes @ 9:45 am
Weekday Mass: Mondays - 3:30 pm

ST. PAUL'S LUTHERAN CHURCH LCMS
Pastor Don Haselhuhn
Six and one-half miles south and 4 miles east of Lincoln
Worship Service @ 9:00 am

ST. PAUL'S LUTHERAN CHURCH, ELCA
Pastor Rod Thompson, Tescott
Worship Service @ 9:00 am

TESCOTT UNITED METHODIST CHURCH
Pastor Demerle Eckart
Sunday School @ 10:00 am
Worship @ 11:00 am

TRINITY LUTHERAN CHURCH, HUNTER
Pastor Matthew Schneider
Hunter, Kansas
Sunday School @ 9:00 am
Worship Service @ 10:00 am
Midweek/Confirmation
Wednesdays @ 4:30 to 5:45

Barnard United Methodist Church

Pastors Kaye and Jeff Metzler
Service Times:
Sunday School 10:00 a.m.
Morning Worship: 11:00 a.m.

COMMISSION MEETING MINUTES

January 26, 2026
The Lincoln County Board of Commissioners met in the courthouse commission meeting room on Monday, January 26, 2026. Chairman Debora Smith called the meeting to order at 8:30 a.m. with Vice-Chairman Ken Meitler and Member Leon Hart present. County Clerk Dawn Harlow was in attendance as recording secretary.

Others present for portions of the meeting: Adam Robertson, Mary Ann Stertz, Kris Heinze, Felicia Strahm, Jesse Knight, and Diane Walters.

Correspondence: a calendar from Campbell & Johnson; an annual report from Representative Tracey Mann; a flyer from an assisted living marketing company; tax abatements; and a lease purchase agreement for the Beverly Rural Fire District.

Administrators' Report: met with Tony Lamia concerning operations of the recycling center; will meet on Friday with the food bank representatives and Transportation Bus Director Colleen Tennant; attended a meeting concerning WIC and will attend another one this week.

County Treasurer Mary Ann Stertz related that the \$17,142.65 remaining in the Treasurer's Special Vehicle fund, after expenses are paid, will be transferred to the General Fund in May. Stertz provided the 4th quarter 2025 Treasurer's Quarterly Idle Funds Investment Report with interest earned of \$41,742.82.

Kris Heinze formally requested that the snow-packed roads in their part of the county be bladed, citing an even greater need due to the bridge replacement project that has limited access to their residence and pastures in the area.

Human Resource Officer Felicia Strahm related that the health nurse/administrator applicant has signed the letter offer and completed all pre-employment testing, with results pending. Debora Smith moved to employ Mona

Buttenhoff as the Health Department Administrator, at Grade 35 Step 20, \$31.30 per hour, effective January 27, 2026, seconded by Leon Hart. Motion carried. Strahm reported that she participated in the Kansas Works virtual job fair and received one application for the assistant appraiser position. Debora Smith moved to recess into executive session for ten minutes for the purpose of discussing Public Works applicants, pursuant to K.S.A. 75-4319(2)(b)(1) to discuss personnel matters of nonelected personnel to reconvene in the courthouse commission meeting room with the board, Adam Robertson, and Felicia Strahm present, seconded by Ken Meitler. Motion carried.

Time in: 9:18 a.m. Time out: 9:28 a.m.
The chairman reconvened the meeting to regular session at 9:28 a.m. with no action taken.

January 30, 2026

The Lincoln County Board of Commissioners met in the courthouse commission meeting room on Friday, January 30, 2026. Chairman Debora Smith called the meeting to order at 8:30 a.m. with Vice-Chairman Ken Meitler and Member Leon Hart present. County Clerk Dawn Harlow was in attendance as recording secretary.

Others present for portions of the meeting: Adam Robertson and Felicia Strahm.

The board reviewed the list of board appointees whose terms expire on February 28. The board discussed the lease agreement drafts for county-owned property provided by Commissioner Smith. The board reviewed department head timetables and discussed overtime hours worked by EMS staff and the list of part-time employees with no work hours for the current pay period. The group discussed a gravel pit lease agreement that has not been renewed.

Debora Smith moved to approve payroll in the amount of \$224,556.38,

seconded by Leon Hart. Motion carried. Debora Smith moved to approve accounts payable in the amount of \$1,265,940.04, seconded by Ken Meitler. Motion carried.

Commissioner Smith provided information received through the attorney assist program regarding the county attorney's requirement to also serve as the county counselor, and items to consider if they wish to contract with a different attorney to provide county counselor services. Commissioner Smith will request that County Attorney Wright attend the next commission meeting to discuss several issues, including the lease agreements.

Commissioner Meitler discussed the Meitler gravel pit and a fence between that pit and another former pit on his property that was previously leased by the county in the early 1990's. The fence in question sits on the ledge between the two gravel pits. Meitler suggested that the county consider addressing the fence in the future by entering into an agreement with both landowners, measuring the area, and mining the gravel remaining under the fence line.

Administrators' report: received an email from Diane Walters, Lincoln Park Manor, concerning a failed section of guttering at the nursing home; has sent follow up information requested by Senator Elaine Bowers concerning the sales tax legislation requested; Brett Wilkinson, Kirkham Michael, will provide a list of bridges that the board can select for upcoming grant program applications; and that he has sent reimbursement funding requests for OS 107 December and January payments; will be added as an administrator to the Health Department Patagonia software program.

The chairman adjourned the meeting at 8:45 a.m. The next meeting will be in the courthouse commission meeting room at 8:30 a.m. on Monday, February 2, 2026.

Church schedules are made possible by the following sponsors:

St. Paul's Lutheran Church
If you would like to sponsor these area churches, please contact the Lincoln Sentinel at 785-524-4200.

PANCAKE DAY!
YOU are INVITED to Bethlehem's Annual Pancake Day
Sunday, February 15, 2026
11:00 A.M. to 7:00 P.M.
Bethlehem Lutheran Church Parish Hall
308 N Indiana
Sylvan Grove Kansas
Serving Pancakes, Whole Hog Sausage, Scrambled or Fried Eggs, Homemade Desserts
Free Will Donation
Our mission this year is to replace the windows in the Bethlehem Lutheran School building.

Help Wanted

Wilson Communications Full Time Customer Service Representative

Wilson Communications has an immediate opening for a full time Customer Service Representative. The duties of this position include assisting customers with fiber-to-the-home services: local telephone service and broadband Internet service; processing customer payments, along with order taking, promoting, selling services and scheduling.

The position requires customer service experience, telephone etiquette, online posting/email etiquette, verbal and written communication skills, PC skills with the ability to learn proprietary software, the ability to manage multiple tasks, and working with various departments. The environment is customer focused, team-oriented, fast-paced, with attention to detail.

Please send a cover letter and resume to
**Wilson Communications,
Attn Human Resources,
PO Box 190, Wilson KS 67490-0190;
drop it by the office at
2504 Avenue D in Wilson;
or email to mary.zorn@wilsoncom.net**



Wilson Communications offers competitive compensation, excellent benefits and is an equal opportunity employer.

THE ANGLE



Alexa Romesburg

What's the point? Am I making a difference? Is my life of any value to those around me? When I die, will my efforts have any lasting impact? Will my time on this earth have mattered? The older I get, the more these questions close in around my sense of purpose. I heard a story many years ago, and I know not whether it is a true story or simply a myth with meaning. But my family and I used to live in Florida, near the ocean. We could walk on the beach anytime. It was beautiful. You could walk for miles and miles on a stretched-out sand-covered shore, as rhythmic waves keep time with your steps, whether slow or brisk, like an oceanic metronome, and rolling tides of saltwater gently lap your feet. At just the right time of day (or year)

one could walk for hours with nothing and no one around. I took such walks often in Florida, but not often enough.

The aforementioned story also takes place on a beach. He is walking along the shore, bending down every so often to pick something up, pausing briefly as he does, with an appreciative glance at the thing in his hand, before promptly tossing it back into the sea. An old man sitting nearby, curiously watches the boy. The man, observing him more intently, becomes perplexed. The desolate beach was littered with starfish stranded in the sand after being carried ashore with unusually high tides which washed them up above the water's edge and left them there upon receding back out again. They would surely die if left to dry out in the hot sun. Up and down the shoreline, there were several scores

of them, as far as the old man's eyes could see. He couldn't just sit back and watch the boy continue to do what seemed to him to be an exercise in futility. Standing up, and ambling down, nearer to the boy, he said, "What are you doing?" The boy looked up, startled, as he recognized for the first time, the presence of another person on the beach. He replied, "Well, I'm throwing the starfish back into the ocean, or else they're going to die." The old man blustered back, challenging the boy saying, "What's the point? There're too many. You'll never get them all! Why even waste your time? They're not worth it. You're never going to make a difference, son." The young boy, undisturbed by the older man's words, and before uttering another word of his own, simply stooped down again, and picking up another starfish, paused once more, just for a moment, and gazed at the unique creature in his hand. Then, the boy, after throwing it back into the ocean, turned back to the old man and humbly

responded, "I made a difference for that one."

I think that's the point. Maybe we won't all have our name written in history books as a hero or a highly acclaimed leader of our time and generation. Maybe the world as a whole will never even know we existed at all, in our little corner of it. Maybe neither we, nor the masses will ever see our name lit up in Hollywood lights or splashed across the cover of a Vogue cover. But maybe that is not important at all. Maybe, just maybe, like the little boy, it is enough to appreciate the unique, individual starfish- and people- whom we have the power and ability to help, encourage, save, rescue, teach, inspire, or love, right in front of us. Maybe we won't ever be able to "save them all." But maybe that was never the goal. At the end of our time on this earth, maybe there will be only one thing we did of any importance or real significance- but if we, like the boy, can say, "I made a difference for that one" then certainly, it was all worth it.

POST ROCK EXTENSION DISTRICT

Now is the time to have a Farmland Transition Plan!

By Sandra L. Wick
K-State Research and Extension
Post RockCrop Production Agent

"Mother Nature" is really bringing us some winter temperatures and weather! We hope that you all are staying safe and well! Now is the time to reflect on memories, discuss your family farm operations and even visit about plans in the future for sustaining your family farm.

The Kansas producer's average age is 58, indicating there will be a major transfer of farm ownership throughout the next 20 years. To ensure the successful transition of farm ownership and management across generations, it is essential to have a contingency plan in case the "what if" situations happen such as an unexpected injury or passing. Developing and communicating these plans to family members can be a challenge; however, the reward of sustaining the well-being of your family is worth the effort. It is important to regularly discuss farm succession and estate planning with your parents, children, grandchildren, and other appropriate stakeholders.

So when do I need to start working on my farm contingency plan? The family farm is a vital aspect of American industry and a significant contributor to the economy. But maintaining a thriving farm opera-

tion is no small task, given the level of financial commitment, opportunity and risk associated with agriculture and agri-business. Few family farming operations survive an unexpected change to the management ownership of their farming business as well as a family crisis situation and still remain profitable. So the answer to the question on when to start planning? As soon as possible even if it is several years in the future.

The simple goal is to make family communications about the future of the farm easier, more satisfying, and more effective for family members of all ages. A greater understanding of the role of communication in farm transition planning can help farm families develop workable contingency plans that result in productive family businesses while maintaining family relationships.

Did you know that K-State Research and Extension has a program called, the Kansas Agricultural Mediation services or also known as KAMS that has been available to farm families for over 25 years to help with agricultural legal matters and your financial questions including farm succession? KAMS connects producers with the right resources for any of your ag-related issues or concerns. The initial contact is with a toll free number at 1-800-321-3276 or 1-800-321-FARM!

From this contact the staff will direct your questions and inquiries to the most appropriate specialists depending on your situation. Email can also be used with kams@ksu.edu and their website is www.ksre.ksu.edu/kams.

KSRE also has several excellent publications available on our Ag manager website under the Business Planning section, in helping farm families start the process of transition planning. One such publication is the "12 steps to Keep the Family Farming". This KSU publication is available either online or at any of our Post Rock Extension District Offices in Beloit, Lincoln, Mankato, Osborne or Smith Center.

For more information on "Farm Transition Planning", stop by or call me at any office of the Post Rock Extension District in Beloit, Lincoln, Mankato, Osborne or Smith Center. *Post Rock Extension District of K-State Research and Extension serves Jewell, Lincoln, Mitchell, Osborne, and Smith counties. Sandra may be contacted at swick@ksu.edu or by calling Smith Center, 282-6823, Beloit 738-3597, Lincoln 524-4432, Mankato, 378-3174, or Osborne 346-2521. Join us on Facebook at "Post Rock Extension". Our online "Ag Newsletter" is published every week on our website www.postrock.ksu.edu and my twitter account is @PRDcrops.*

Farmers & Ranchers Livestock Commission Co.

Total for the Week - Cattle - 5,753

Bulls - \$200 - \$209 Cows - \$167 - \$178

Strs	Hfhrs
300-400 \$650.00-660.00	300-400 \$610.00-620.00
400-500 \$590.00-600.00	400-500 \$540.00-550.00
500-600 \$525.00-537.00	500-600 \$470.00-485.00
600-700 \$465.00-476.00	600-700 \$425.00-434.00
700-800 \$400.00-410.50	700-800 \$378.00-398.00
800-900 \$377.00-387.00	800-900 \$320.00-330.00
900-1000 \$332.00-343.00	900-1000 \$305.00-316.00

Early Consignments for Thursday, February 12th Sale: 10 a.m.: 25 mostly blk hfhrs, 750#s, long wean, open; 68 s&h, 600-700, wean 45 days, hay fed; 51 red/charX s&h, 750-1000, home raise, wean August, all vacc; 30 blk hfhrs, 750-850, home raise, long wean, 2 round vacc, no implant, checked open; 24 blk str, 800-850, long wean, fall vacc; 50 mostly blk s&h, 750-900, long wean, 2 round vacc, open; plus many more by sale time.

Early consignments for Wean/Vacc sale, February 17:

Bred Heifers: 30 blk bred hfhrs, bred hereford, March calvers, complete vacc; 120 bwf hfhrs, Ft. Pierre origin, off 2 ranches, calve March 20, AI to Broadrange, clean up with Green Garden bulls; 7 wf/blk hfhrs, all AI'd to angus bulls; 8 bred hfhrs, 1st/2nd calvers; plus more by sale time.

Heifer Pairs: 4-4 heifer pairs; plus more by sale time.

Cows/Cow Pairs: 50 blk cows, 4-8 years, bred blk/gelbvi Optimiser, calve March 10; 15 aged cows, bred blk; 20 red/charX cows, 3-6 years, bred to Fink or Bar U Copper-head bulls; 20 blk/bwf cows, 4-5 years, bred angus, heavy bred; 12 young spring bred cows; 12 running age cows, March calvers; 35 mix cows, older, bred blk, heavy spring calvers; 40 mix running age heavy bred cows; 13 blk cows, 3-12 years, bred blk, March calvers; 20 blk cows, 6-8 years, bred angus, all vaccs, March calvers; 300 cows, running age, 2nd/3rd period; 45 blk cows, 3-5 years, bred angus, heavy bred; 14+14 red angus running age pairs, running back with Leachman red angus bulls, 300# calves; plus more by sale time.

Cow Sales

Tuesday, February 17 (11 am)

Tuesday, March 17 (11 am)

For a complete list of cattle for all sales check out our website at: www.fandrive.com

Sales Manager, Mike Samples

Office: 785-825-0211 Cell: 785-826-7884

Salina, Kansas

Listen to our markets on KSAL, Salina at 6:45 a.m. Mon. thru Fri.

For more information or to consign cattle call sale barn or:

Fieldman Representatives:

Kenny Briscoe • Lincoln, KS • 785-658-7386

Lisa Long • Ellsworth, KS • 620-553-2351

Cody Schafer • 620-381-1050

Auctioneers:

Kyle Elwood, Brandon Hamel, and Garren Walrod

Give FFA Day will celebrate and support future Kansas leaders

Manhattan, Kan. - Ensuring students have the resources to thrive is the Kansas FFA Foundation's underlying goal, and on Thursday, February 26, 2026, Give FFA Day will inspire supporters nationwide to come together to set a new giving record. Held during National FFA Week, the 24-hour giving challenge fuels opportunities for more than one million FFA members nationwide and nearly 14,000 students in Kansas who are developing into the next generation of leaders, innovators, and changemakers in agriculture and beyond. In Kansas, the goal is to raise \$50,000.

The Kansas FFA Association, part of the National FFA Organization, helps students discover their potential through hands-on experiences, leadership development, and career exploration as a part of school-based agricultural education programs in high schools. Through the Kansas FFA Foundation, donations made on Give FFA

Day directly support these life-changing opportunities, including providing FFA jackets to members in need, funding leadership conferences and competitions, expanding career-readiness programs, and supplying resources and support for agriculture teachers year-round.

"Give FFA Day is an investment in the future of agriculture and in the young people who will lead it," said Beth Gaines, Kansas FFA Foundation Executive Director. "Every single gift—large or small—creates opportunities for Kansas FFA members to learn, grow, and thrive. Together, we are building a legacy that ensures future generations of students can experience the full impact of FFA."

This year, generous supporters are doubling the impact of donations up to \$30,000. Matching gifts have been pledged by Ag Partners Cooperative, Mustang Seeds, John and Jennifer Niemann, Jerry and

Anita DeWeese, Mark Mayfield, S&S Rock Crushing, ICEV, Orrin and Beth Holle, Regional Veterinary Services (David and DeRhonda Newby), and the Kansas FFA Foundation Board of Trustees. The goal for 2026 is to raise \$50,000 in 24 hours, with hopes of surpassing last year's milestone of more than \$60,000 raised in support of Kansas FFA.

"FFA shaped who I am as a leader, and I see that same transformation happening in today's students," said Yancy Wright, Chairman of the Kansas FFA Foundation Board of Trustees. "When we give on Give FFA Day, we're not just making a donation—we're empowering young people with the confidence, skills, and experiences they need to lead agriculture and our communities into the future."

To make a gift on Give FFA Day, visit <http://bit.ly/4pO4edO>, call 785-410-7313, or email foundation@kansasffa.org.

Have a great week!

Kansas Press Association, Inc.
SUBSCRIPTION RATES

Single Copy\$1.25
Print/Digital (KS)\$66.00
Print/Digital (out of state)\$77.00
Digital Only\$44.00
(tax included in all prices)

Periodical's Postage Paid at
Lincoln, KS 67455

The Official Newspaper for Lincoln County Kansas

LINCOLN SENTINEL-REPUBLICAN

TO SUBMIT NEWS: Lincoln Sentinel-Republican welcomes news and will print it as it fits our guidelines. The best way to submit news is e-mail it to lincolnksnews@gmail.com, mail it to 141 W. Lincoln Ave, Lincoln, KS 67455.

TO ADVERTISE: Lincoln Sentinel-Republican offers retail and classified advertising. We can build an ad campaign to fit your budget and reach our loyal readership. For all advertising placements, please email lincolnksnews@gmail.com, call our office, 785-524-4200, or mail it to 141 W. Lincoln Ave, Lincoln, KS 67455.

Subscriptions: Questions and updates regarding subscriptions should be sent to lincolnksnews@gmail.com

ADVERTISING AND NEWS DEADLINE - FRIDAYS AT NOON

JLS GROUP, LLC
LINCOLN SENTINEL-REPUBLICAN

JYLL PHILLIPS
EDITOR EMERITUS
ABBY GERLEMAN
BUSINESS MANAGER
ADVERTISING
BECKY RATHBUN
DESIGN
PAGINATION

ANNA KRISTEK
GRAPHIC DESIGN
LAUREN HOUCHEMS
GRAPHIC DESIGN
PAGINATION

141 W. LINCOLN AVENUE - LINCOLN, KS 67455 - (785) 524-4200 - USPS 313-820 - LINCOKNSNEWS@GMAIL.COM - LINCOLN SENTINEL.COM

NOTICE

This newspaper will not knowingly accept any advertising for real estate which is in violation of the law. Our readers are hereby informed that, to the best of our knowledge, all dwellings advertised in this newspaper are available on an equal opportunity basis. To complain of discrimination call HUD toll-free at 1-800-424-8590. Equal Housing Opportunity.

Big ads get noticed - small ads do too!

Contact us at lincolnksnews@gmail.com to start advertising today!

Weekly Temps

	High	Low	Rain
2-3	46	24	
2-4	46	23	
2-5	45	25	
2-6	70	43	
2-7	56	23	
2-8	60	34	
2-9	71	31	

**HIRING?
SELLING?
BUYING?
RENTING?**

Contact us TODAY to get your listing in the CLASSIFIEDS!



Phone Number & Website
785-524-4200 | JLSNewsGroup.com

Legal Notice

(First Published in Lincoln Sentinel-Republican on Wednesday, February 11, 2026)
IN THE DISTRICT COURT OF LINCOLN COUNTY, KANSAS

In the Matter of the Estate of)
) Case No. LC-2026-PR-000002
Doris E. White, deceased) **Title to Real Estate Involved**
)
(Petition Pursuant to K.S.A. Chapter 59)

NOTICE OF HEARING AND NOTICE TO CREDITORS

The State of Kansas To All Persons Concerned:
You are hereby notified that on February 5, 2026, a Petition was filed in this Court by Rodney R. Larsen and Nancy K. Marihugh, Petitioners, praying for the issuance of Letters of Administration under the Kansas Simplified Estates Act, to serve without bond. You are further advised that the Petitioners in this matter have requested administration pursuant to the Kansas Simplified Estates Act. The Court may not supervise administration of the Estate, and no further notice of any action from the Administrators or other proceedings in the administration will be given. If written objections to simplified administration are filed with the Court, the Court may order supervised administration to ensue.

You are required to file your written defenses thereto on or before March 9, 2026, at 9:30 a.m. on such day, in the District Court of Lincoln County, Kansas, 216 E. Lincoln Avenue, Suite f, Lincoln, Kansas 67455, at which time and place such cause will be heard. Should you fail therein, judgment and decree will be entered in due course upon the petition.

All creditors are notified to exhibit their demands against the Estate within the latter of four months from the date of first publication of notice, or if the identity of the creditor is known or reasonably ascertainable, 30 days after actual notice was given as provided by law. If their demands are not thus exhibited, they shall be forever barred.

/s/ Rodney R. Larsen)
Petitioner) /s/ Nancy K. Marihugh
Petitioner)

Submitted by:

Jeffrey A. Norris, KS 27036
CLARK, MIZE & LINVILLE, CHARTERED
129 S. Eighth - P. O. Box 380
Salina, Kansas 67402-0380
Tel. (785) 823-6325 - Fax (785) 823-1868
janorris@cml-law.com
Attorneys for Petitioner

Legal Notice

(First Published in Lincoln Sentinel-Republican on Wednesday, February 4, 2026)
IN THE DISTRICT COURT OF LINCOLN COUNTY, KANSAS CIVIL DEPARTMENT

VANDERBILT MORTGAGE AND)
FINANCE, INC.,)
) Case No. LC-2025-CV-000001
Plaintiff,)
) Chapter 60
vs.) Title to Real
Estate Involved)
ESTATE OF TAMARA NEWCOM,)
DECEASED, et. al.,)
)
Defendants.)

NOTICE OF SHERIFF'S SALE

NOTICE IS HEREBY GIVEN, that under and by virtue of an Order of Sale issued to me by the Clerk of the District Court of Lincoln County, Kansas, in the case above numbered, the undersigned Sheriff of Lincoln County, Kansas, directed, will offer for sale at public auction and sell to the highest bidder for cash in hand at the Front Courthouse Steps of the Lincoln County Courthouse, Lincoln, Kansas, on Thursday, February 26, 2026, at 10:00 a.m. of said day, the following described real estate situated in the County of Lincoln, State of Kansas, to-wit:

LOT 15 IN BLOCK 9 OF THE EAST PART OF FAIRMOUNT ADDITION TO THE CITY OF LINCOLN CENTER, LINCOLN COUNTY, KANSAS, including one (1) 2010 CMH SARATOGA Y Manufactured Home with VIN CBH020755TX.

Commonly known as 126 E. Center Street, Lincoln, KS 67455 (the "Real Property").

to satisfy the judgment in the above-entitled case. The sale is to be made without appraisal and subject to the redemption period as provided by law, and further subject to the approval of the Court.

LINCOLN COUNTY SHERIFF
DUSTIN FLORENCE

Submitted by:

SANDBERG PHOENIX & von GONTARD P.C.
Scott D. Mosier, KS# 23783
701 Market Street, Suite 600
St. Louis, MO 63101
314-231-3332
FAX: 314-241-7604
HYPERLINK "mailto:smosier@sandbergphoenix.com"smosier@sandbergphoenix.com
Michele M. O'Malley, KS# 20760
4600 Madison Ave. Suite 1000
Kansas City, MO 64112
Tel: 816-627-5546
Fax: 816-627-5532
momalley@sandbergphoenix.com
ATTORNEYS FOR PLAINTIFF

SANDBERG PHOENIX & von GONTARD P.C. IS ATTEMPTING TO COLLECT A DEBT AND ANY INFORMATION OBTAINED WILL BE USED FOR THAT PURPOSE.

Lincoln Sentinel-Republican Business & Service Directory
Call: 785-524-4200 or email: lincolnksnews@gmail.com to get your business card for as low as \$8.75 per week!

AERIAL SPRAYING

Post Rock Aviation
Clay Haring (785) 524-5240 Lincoln, KS
Helping farmers feed America.

ALPHA AG AIR LLC.
Tracy Hillegeist 785-577-3017
Lucas Baumbach • 785-243-4803
Beverly, Kansas

AUTOMOTIVE REPAIR

MEYER TIRE & LUBE
785-524-4480
1892 E. Hwy 18 - Lincoln, KS
LP Bottle Exchange
Oil - Lube - Tires - Full Service
Hours: M-F - 7:30-5:30; Sat - 8:00-12:00

BANKING

Citizens State Bank
& Trust Company
Ellsworth • Lincoln
Delphos • Glasco
Minneapolis
785.524.4840
www.csbank.com

CHIROPRACTIC

Grant Heller, D.C. Monday-Friday
Mark E. Luce, D.C. Mondays & Saturdays
102 E. Elm Street
Lincoln, KS 67455
Call for an appointment.
785-524-4371

HISTORICAL SOCIETY

Lincoln County Historical Society
Hours: Wed. - Fri. 1 - 5 p.m. | Sat. 10 a.m - 2 p.m.
785-524-9997 | directorlchm1@gmail.com
facebook.com/lchistoricalmuseum
lincolnksmuseum.com

LIQUOR SALES

Viv's Retail Liquor
605 N 6th St.
524-4844
HOURS: 9am-9pm Mon.-Thurs.
9am-10pm Fri. & Sat.

OPTOMETRY

G. Kyle Gwinner OD, L.L.C.
208 W. Lincoln, Lincoln, KS
M,W, & Th- 8:00 am- 12 noon
Tues. & Fri. - 8:00 am- 5 pm
Call 524-5244 or 785-202-1968

RESTAURANT

Sylvan Sale Barn Cafe
Monday 6:30 am until the sale is over
785-526-7123

SEED SALES

Frederking Seeds
• State of the Art Seed Treatment On-Site
• Seed Tenders Available Channel
• Full line of Corn, Soybean, Alfalfa and Other Seed Available
Eric Frederking - (785) 531-0612
Ron Frederking - (785) 658-7223

KANSAS CLASSIFIEDS

For Sale
Place your 25-word classified in the Kansas Press Association and 135 more newspapers for only \$300/ week. Find employees, sell your home or your car. Call the Kansas Press Association @ 785-271-5304 today!

Want to Buy
Old red bordered Kodachrome family slides of small town /rural life. Cash paid, postage paid both ways American Image Library, 314-260-9344 danielliebert67@gmail.com

Misc.
We Buy Houses for Cash AS-IS! No repairs. No fuss. Any condition. Easy process: Call, get cash offer and get paid. Call today for your fair cash offer: 1-913-365-1969

Misc.
Attention: VIAGRA and CIALIS USERS! A cheaper alternative to high drugstore prices! 50 Pill Special - Only \$99! 100% guaranteed. CALL NOW: 1-833-641-6607

Misc.
We Buy Vintage Guitars! Looking for 1920-1980 Gibson, Martin, Fender, Gretsch, Epiphone, Guild, Mosrite, Rickenbacker, Prairie State, D'Angelico, Stromberg. And Gibson Mandolins / Banjos. These brands only! Call for a quote: 1-833-641-6990

Misc.
CASH PAID FOR HIGH-END MEN'S SPORT WATCHES. Rolex, Breitling, Omega, Patek Philippe, Heuer, Daytona, GMT, Submariner

and Speedmaster. These brands only! Call for a quote: 1-833-641-4573.

Misc.
GOT AN UNWANTED CAR??? DONATE IT TO PATRIOTIC HEARTS. Fast free pick up. Patriotic Hearts' programs help veterans find work or start their own business. Call 24/7: 1-833-485-0154.

Misc.
BATH & SHOWER UPDATES in as little as ONE DAY! Affordable prices - No payments for 18 months! Lifetime warranty & professional installs. Senior & Military Discounts available. Call: 1-833-752-0092

Misc.
STOP OVERPAYING FOR HEALTH INSURANCE! A recent study shows that a majority of people struggle to pay for health coverage. Let us show you how much you can save. Call Now for a no-obligation quote: 1-833-928-5491 You will need to have your zip code to connect to the right provider.

Misc
INJURED IN AN ACCIDENT? Don't Accept the insurance company's first offer. Many injured parties are entitled to cash settlements in the \$10,000's. Get a free evaluation to see what your case is really worth. 100% Free Evaluation. Call Now: 1-833-770-0339

Misc
AGING ROOF? NEW HOMEOWNER? STORM DAMAGE? You need a local expert provider that proudly stands behind their work. Fast,

free estimate. Financing available. Call 1-833-889-4107 Have zip code of property ready when calling!

Misc
WATER DAMAGE CLEANUP & RESTORATION: A small amount of water can lead to major damage in your home. Our trusted professionals do complete repairs to protect your family and your home's value! Call 24/7: 1-833-879-1451 Have zip code of service location ready when you call!

Misc
NEED NEW WINDOWS? Drafty rooms? Chipped or damaged frames? Need outside noise reduction? New, energy efficient windows may be the answer! Call for a consultation & FREE quote today. 1-833-880-0052 You will need to have your zip code to connect to the right provider.

WANTED TO BUY!

Wanted to Buy Coin and Currency Collections, Gold and Silver Jewelry, any Shape, Pocket Watches and War Memorabilia.

Call Steven
785-472-1340
Drovers Coin & Antiquities Exchange



Got a great news story?
Send your information to
lincolnksnews@gmail.com

Two Day February Consignment Auction
Tuesday, February 24th & Wednesday, February 25th – 9am
Brush, Colorado
At lot East of Town at Jct of Hwys 34 & 71
Delivery Deadline for All Items is WEDNESDAY, FEBRUARY 18th
 Selling Farm & Construction Equipment, Tractors, Loaders, Forklifts, Skid Steers, Semi & Farm Trucks, Vehicles, ATV's, all types of Trailers, Campers, Boats, Livestock Equipment, Farm & Construction Attachments & more.
Live On-Site Bidding Plus Pre-Auction and Live On-Line Bidding, Phone and Absentee Bidding on all Items.
CONTACT AMA WITH QUESTIONS ABOUT WHAT ITEMS WILL BE ACCEPTED.
 (No Miscellaneous items accepted for this auction)
Auctioneers Miller & Associates
Chuck & Bryson Miller
970-842-5575 • Brush, CO
www.AMAAuctions.com



Legal Notice

(First Published in Lincoln Sentinel-Republican on Wednesday, February 11, 2026)

For Period 12/31/2025

Fund Name	Beginning Balance	Receipts	Expenditures	Ending Balance
County General	\$987,291.32	230,404.38	833,420.45	\$384,275.25
Road & Bridge	\$707,988.83	108,460.95	683,162.59	\$133,287.19
Special Bridge	\$507,202.85	1,302.96	224,217.87	\$284,287.94
Special County Road	\$39,483.96	0.00	0.00	\$39,483.96
Special Machinery	\$842.33	140,246.00	0.00	\$141,088.33
Special Road Improvement	\$130,425.54	100,000.00	12,011.52	\$218,414.02
Special Highway Improvement	\$34,753.83	133,769.82	25,742.77	\$142,780.88
County Refuse	\$197,304.30	59,752.26	85,401.80	\$171,654.76
Ambulance CPR	\$1,144.24	0.00	0.00	\$1,144.24
Ambulance	\$137,577.09	52,337.09	129,068.02	\$60,846.16
Ambulance Capital Outlay	\$119,180.94	0.00	0.00	\$119,180.94
Capital Improvement Fund	\$1,744,841.02	265,000.00	1,392.70	\$2,008,448.32
Equipment Reserve	\$166,101.00	100,000.00	0.00	\$266,101.00
Lincoln County 911	\$195,470.31	17,519.80	1,702.89	\$211,287.22
Employee Benefit	\$692,631.19	10,037.71	373,119.87	\$329,549.03
Health Ins Claim Fund	\$925,463.85	11,198.96	0.00	\$936,662.81
Emergency Mngt Cert Grant	\$151.07	0.00	0.00	\$151.07
Covid-19 Grant Funds	\$0.00	0.00	0.00	\$0.00
CDBG Grants	\$31,134.91	56,525.85	18,529.93	\$69,130.83
Health Fund	\$66,418.45	48,998.83	103,647.04	\$11,770.24
County Health Capital Outlay	\$65,336.69	55,000.00	0.00	\$120,336.69
Home For Aged - Emerg & Rep	\$140,410.53	10,200.00	26,014.68	\$124,595.85
Law Enforcement	\$24,910.89	164.69	0.00	\$25,075.58
Noxious Weed - General	\$70,055.31	594.75	31,953.86	\$38,696.20
Noxious Weed - Capital Outlay	\$24,159.57	20,000.00	0.00	\$44,159.57
Reappraisal - Capital Outlay	\$17,976.09	0.00	0.00	\$17,976.09
Rescue Squad	\$139,846.43	0.00	2,859.47	\$136,986.96
Repeater Board	\$22,285.91	3.35	7,435.90	\$14,853.36
Transportation Bus	\$6,945.96	12,719.82	18,637.57	\$1,028.21
Barnard RFD - Spec Equipment	\$39,464.37	16,500.00	0.00	\$55,964.37
Beverly RFD - Spec. Equipment	\$66,576.16	18,000.00	0.00	\$84,576.16
First RFD - Spec Equipment	\$59,444.66	3,000.00	0.00	\$62,444.66
Hunter RFD - Spec Equipment	\$1,248.75	50,000.00	0.00	\$51,248.75
Sylvan Grove RFD - Spec Equip	\$87,082.58	8,500.00	0.00	\$95,582.58
Barnard RFD - General	\$25,840.42	138.47	19,251.74	\$6,727.15
Beverly RFD - General	\$28,624.66	411.95	25,392.40	\$3,644.21
First RFD - General	\$45,147.46	147.74	42,020.16	\$3,275.04
Hunter RFD - General	\$34,962.29	27,930.37	54,172.32	\$8,720.34
Ottawa RFD - General	\$0.00	0.00	0.00	\$0.00
Sylvan Grove RFD - General	\$16,236.20	1,399.55	10,045.85	\$7,589.90
Sylvan Grove RFD - No Fund Warrants	\$126.90	-126.90	0.00	\$0.00
Totals	\$6,763,987.30	1,560,138.40	\$2,729,201.40	\$6,433,025.86

I, Dawn Harlow, County Clerk in and for the County of Lincoln, Kansas, do hereby certify that the foregoing is a true and correct copy of the claims allowed by the Board of County Commissioners at their October-December 2025 meetings. In accordance with K.S.A. 19-228, the above is public information and detailed records can be viewed in the County Clerk's Office during office working hours. Witness my hand and official seal, this 28th day of January, 2026



Dawn M. Harlow

Dawn M. Harlow, County Clerk of Lincoln County

Kansas Connections Academy Opens Enrollment for the 2026-2027 School Year

ELKHART, Kan. – Kansas Connections Academy, a tuition-free, full-time online public school, is now enrolling students in grades K-12 for the 2026-27 school year. With more than 15 years of experience, the school offers an established education program to more than 1,300 students across Kansas.

Kansas Connections Academy provides a high-quality educational experience that keeps students motivated and engaged with a strong circle of support and a deep sense of belonging. The school's team of supportive and experienced educators, specially trained in online instruction, establish meaningful connections with students helping them achieve their full potential and reach their goals.

"We know education isn't one size fits all. With our flexible learning model, teachers work directly with students and meet them where they are in their academic journey," said Laura Hochman, school leader at Kansas Connections Academy. "By prioritizing meaningful connections and individualized support, we specialize in helping students grow with confidence. We look forward to inviting new families to our learning community for the 2026-27 school year."

Kansas Connections Academy continues to teach students to be future-ready with its successful College and Career Readiness program for middle and high school students. The established program integrates traditional academic subjects with industry-leading, career-focused options including IT, business, health sciences and marketing. The

program equips students with durable skills such as leadership, critical thinking and teamwork. Students can participate in career exploration and industry networking opportunities to build confidence, make connections and find direction as they prepare for their future.

Virtual school is a great fit for a variety of students, including those who are academically advanced or struggle in a traditional school setting, as well as those who may be experiencing health challenges, bullying, or live in rural areas. Others are athletes or performers who require a flexible learning schedule.

Kael Taylor, an Olathe, Kansas resident and high school senior at Kansas Connections Academy, credits the school's flexibility for allowing him to pursue his athletic career without sacrificing academics. In the fall, Taylor will attend the University of Akron to play soccer. "With practice and games six days a week, I needed an option for school where I wouldn't fall behind in school, especially when traveling," said Kael. "I'm grateful to the teachers at Kansas Connections Academy for the extra support when I needed it."

Enrollment for the 2026-27 school year is now open for students in grades K-12. Interested families are encouraged to attend an online information session to learn more, ask questions and discover if virtual school is the right fit for their students. For more information about Kansas Connections Academy or to begin the enrollment process, please call 1-833-591-0251 or visit www.KansasConnectionsAcademy.com.

Registration Open for Patterson Grants

The Patterson Family Foundation's 2026 Grant Application opens in early February. The foundation will be accepting Letters of Intent for projects focused on economic opportunity, education, healthcare, and community engagement. Awards are made in two rounds.

If you are interested in applying and haven't previously registered for the grants portal, the portal is now open for

new registrations. Registration approvals take a few days, so new registrants are encouraged to sign up early to allow the maximum time to submit your Letter of Intent (LOI). If you have previously submitted an application and have a grant portal login already you do not need to register again.

<https://pattersonfamilyfoundation.org/grants/>

Nex-Generation Summer 2026 Internships are now open!

Internships for high school and college students. Applications are open January 1–March 1.

Apply through the Nex-Gen Portal: <https://nex-generation.secure-platform.com/site>
 Learn more about the program here: <https://www.nex-generation.org/internships>

Coast-to-Coast Relay to Celebrate America 250

FRONT ROYAL, VA – In 2026, the American Discovery Trail Society (ADTS) celebrates the outdoors and 250 years of our independence with the American Discovery 250 Relay—a 6,800-mile journey along the entire American Discovery Trail from California to Delaware, starting in July and ending around Thanksgiving. The ADTS invites all to join in the celebration by participating for a day or more in a relay, attending one of over 100 local events, or sharing your story of personal growth and adventure. Together, we commemorate America's past and shape our future.

Interested participants or teams are asked to register at discoverytrail.org/america-250-relay. Organizers will work with registrants on their relay destinations closer to the start of the event. Runners, cyclists, hikers, wheelchair users and horseback riders are all encouraged to take part. We also encourage interest from those who wish to help with logistics, welcoming events or sponsorships.

The ADTS is making the turn-by-turn route instructions and GPS tracks free to the public during the 2026 year as part of the celebrations thanks to a generous donation from Indiana Trails. To access these files, please visit: discoverytrail.org/route

About the American Discovery Trail
 The American Discovery Trail is the nation's first non-motorized coast-to-coast trail. It runs for 6,800 miles through 15 states and Washington, D.C. The route incorporates numerous local, state, and national trails, with most of them designed for walking, hiking, and running and for bicycle and equestrian use. It connects scores of scenic and historic trails, back-country roads, national parks and forests plus thousands of state and local properties of historic, cultural and natural significance. Users can experience their local environment, or the 23 ecosystems the trail passes through - deserts, mountains, forests, waterfronts, and plains. You can learn more about the ADT by visiting www.discoverytrail.org.

One team working together for your heart.



The Heart Center at Salina Regional Health Center is one team working together for your heart. It's for one simple reason: patients throughout north-central Kansas deserve comprehensive heart care, close to home. You can trust the skill and expertise of our cardiovascular surgeons and cardiologists, and the care and compassion of our nurse practitioners, physician assistants, nurses, and staff.

The Heart Center is an accredited Chest Pain Center by the American College of Cardiology, providing early, accurate, and life-saving diagnoses, as well as procedures such as bypass surgery, stents and angioplasty; TAVR (transcatheter aortic valve replacement); treatment for atrial fibrillation with the minimally invasive WATCHMAN™ procedure; and cardiac rehabilitation.

Whether you need general cardiac care provided in our clinic or a surgical procedure at Salina Regional Health Center, we are one team working together for your heart. For an appointment or more information, please visit heartcenter.srhc.com.



501 S. Santa Fe Ave., Suite 380 | Salina, KS
 Cardiothoracic Surgery: 785-452-7562 / Cardiology: 785-452-6492



Crop Insurance deadline nears for spring planted Crops, Whole-Farm Revenue Protection and Micro Farm

The U.S. Department of Agriculture (USDA) reminds agricultural producers that the final date to apply for or make changes to their existing crop insurance coverage is quickly approaching for spring planted crops, Whole-Farm Revenue Protection, Micro Farm and some specialty crops. Sales closing dates vary by crop and location, but the next major sales closing dates are Feb. 28, March 15 and April 15.

More info at rma.usda.gov/news-events/news/2026/washington-dc/crop-insurance-deadline-nears-spring-planted-crops-whole-farm?utm_medium=email&utm_source=govdelivery

Thank you for your continued support!