

Free - Pick One Up!

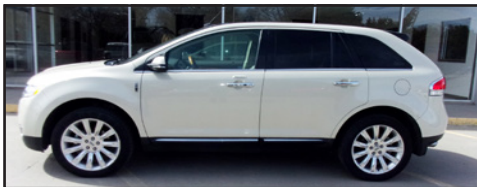
MARKET-PLACE KANSAS

Issue 8 3/26/2025
785-561-0637
marketplacekansas@gmail.com

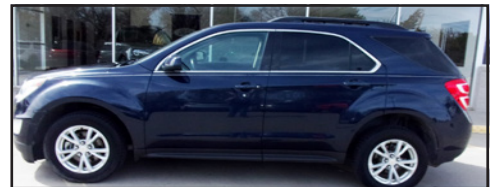
jlsnewsgroup.com

TUBBS & SONS FORD SALES, INC.

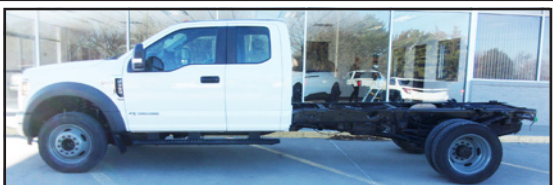
810 South Range
Ave Colby, KS
1-800-369-3673
785-460-6746



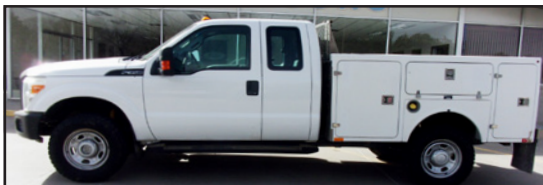
2014 Lincoln MKX 4dv AWD, Platinum Dune Metallic w/ Stone Leather, 3.7L TIVCT V-6, Elite Equipment Group, Navigation, THX Audio, 141K Miles. #01656 **\$8,995**



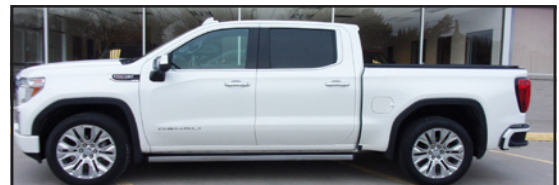
2016 Chevrolet Equinox 4dv FWD, Dark Blue Metallic w/ Black Cloth, 2.4L Ecotech 4cyl, LT Trim, Power Seat, Pioneer Radio, Power Doors, 88K Miles. #12893 **\$9,995**



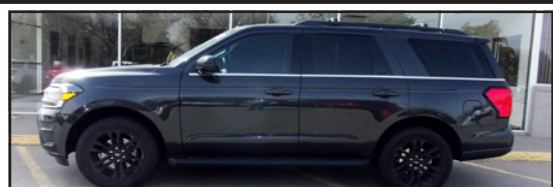
2019 Ford F550 Supercab Chassis XL 4X2, White w/ Medium Earth Grey Cloth, 6.7L Turbo Diesel, 4:88 Limited Slip Axle, Power Equipment, 160K Miles. #14449 **\$25,500**



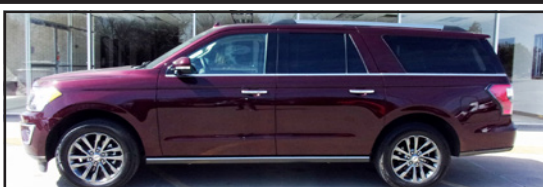
2013 Ford F350 Supercab XL 4WD, Oxford White w/ Grey Vinyl, 6.2L Gas, XL Trim Package, Tilt Wheel, Cruise Control, Power Doors, 180K Miles. #20463 **\$14,850**



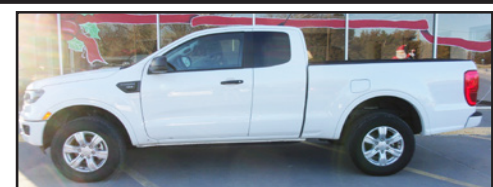
2020 GMC 1500 Crewcab Denali, White w/ Black Leather, 6.2L, 4X4, Heated/Cooled Seats, Navigation, Soft Bed Cover, Power Running Boards, Sunroof, 36K Miles. #21911 **\$47,850**



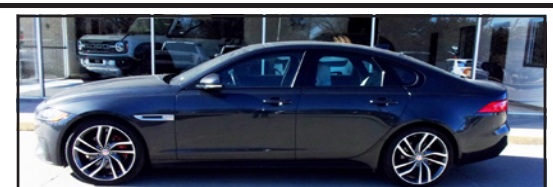
2024 Ford Expedition XLT 4X4 Regular Length, Dark Matter w/ Black Onyx ActiveX, 3.5L V-6 Eco Boost, XLT Trim, Privacy Glass, 6K Miles. #22781 **\$59,850**



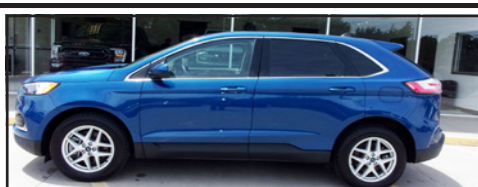
2021 Ford Expedition Limited Max, Burgundy Velvet w/ Tan Leather, 3.5L Eco Boost, Local One Owner, Power Boards, Heated/Cooled Seats, 68K Miles. #24770 **\$39,850**



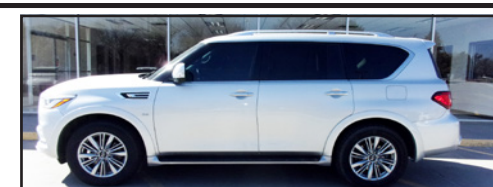
2022 Ford Ranger Supercab XLT 4WD, White w/ Ebony Premium Cloth, 2.3L Eco Boost, Daytime Running Lights, 18 Gallon Fuel Tank, 37K Miles. #38604 **\$28,850**



2017 Jaguar XF 4D, Storm Grey w/ Oyster Leather, V-6, Memory Seats, Heated Steering Wheel, Moonroof, Keyless Entry, Lane Keeping Assist, 53K Miles. #45022 **\$20,850**



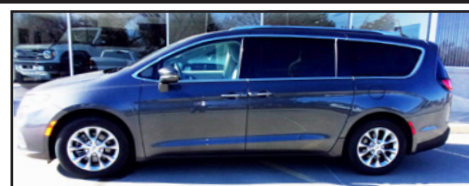
2022 Ford Edge SEL AWD, Atlas Blue w/ Black Leather, 2.0L Eco Boost, Dual Zone Climate Control, Heated Seats, Heated Steering Wheel, 21K Miles. #48252 **\$28,500**



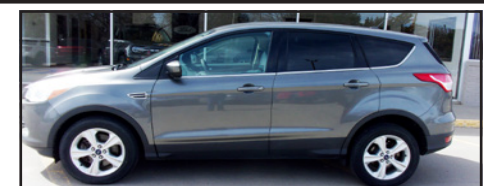
2020 Infiniti QX80 4dr SUV, Silver Metallic w/ Black Leather, 5.6L V-8, Leather Trim, 3rd Row Seating, Power Sunroof, Heated/Cooled Seats, 97K Miles. #53110 **\$28,850**

Picture coming soon

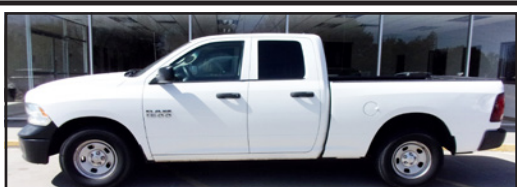
2010 Ford Expedition EL Eddie Bauer, Oxford White w/ Charcoal Black Leather, 5.4L 3V SOHC V-8, Power Lift-gate, Rear View Camera, 112K Miles. #60253 **\$13,850**



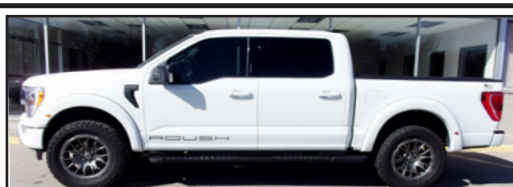
2021 Chrysler Pacifica Touring L, Gray w/ Gray Leather, 3.6L V-6, Slow & Go, AM/FM/Satellite Radio, Heated Seats, Heated Steering Wheel, 68K Miles. #64386 **\$23,850**



2014 Ford Escape SE AWD Sterling Grey w/ Charcoal Black Cloth, 1.6L Eco Boost, Auto Headlamps, 17" Aluminum Wheels, Fog Lamps, 169K Miles. #68104 **\$5,500**



2014 ram 1500 Tradesman Quadcab, White w/ Black Cloth, 3.6L 6 Cylinder, Power Windows, Power Locks, Sprayed in Bedliner, 102K Miles. #72092 **\$13,850**



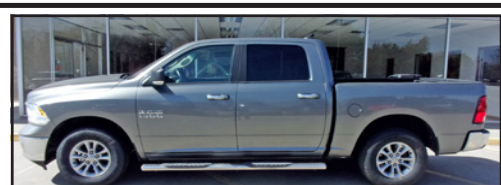
2022 Ford F150 Roush Supercharged Supercrew, white w/ Black Leather, 5.0L V-8 Supercharged, \$95,000 MSRP, Heated Custom Leather, 20K Miles. #74214 **Fresh Arrival**



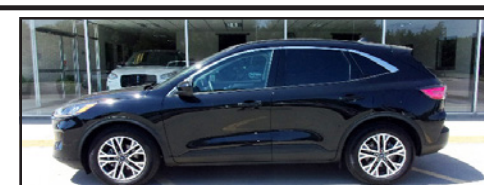
2018 Jeep Wrangler Sahara 4dr 4X4, White w/ Black Cloth, 3.6L V-6, Hard Top, Power Door Locks, Power Windows, Power Mirrors, Cast Aluminum Wheels, 96K Miles. #75458 **\$26,850**



2020 Ford Explorer ST AWD, Atlas Blue w/ Ebony Leather, 3.0L Eco Boost, Premium Tech Package, Multi Contour Front Seats, Heated/Cooled Seats, 48K Miles. #80723 **\$33,850**



2013 Dodge Ram 1500 SLT Bighorn Crew 4X4, Grey w/ Black cloth, 3.6L V-6, Power Seats, Power Windows, Power Mirrors, Power Locks, 143K Miles. #99590 **\$13,850**



2022 Ford Escape SEL FWD, Black w/ Black Leather, 1.5L Eco Boost, 18" Aluminum Wheels, Mini Spare, Roof Rack Rails, Ford Co-Pilot 360 Assist, Navigation, 5K Miles. #99671 **\$28,850**

Looking to join the Chisholm Trail District team?
We are currently hiring a Family & Community Wellness Extension Agent!
For more information, please visit www.ksre.k-state.edu/jobs

WE'RE HIRING!

Chisholm Trail District
Family & Community Wellness
Extension Agent

www.ksre.k-state.edu/about/careers

APPLICATION DEADLINE
April 7, 2025

K-STATE
Chisholm Trail District
Research and Extension
Kansas State University is an equal opportunity employer.





School Secretary
Centre USD #397

Centre USD #397 is currently taking applications for school secretary. Knowledge of basic computer skills, verbal and written communication skills and knowledge of office equipment. This is a 10-month contract.

Applications available at www.usd397.com or contact the USD #397 District Office at 785-983-4304.

Applications close April 4, 2025.
EOE



Hill City Knights of Columbus Hosting William Bates Fish Fry Benefit
William Bates Family who recently lost most of their home and possessions due to a fire.

Saturday, March 29
5 to 7:00 pm.
CCD Center - Hill City

Menu • Fish • Coleslaw • Mac & Cheese
• French Fries • Beverages
A free will offering will be accepted.
If you want to make a donation to this benefit, but cannot be present, please mail to Gary Long: 2762 Q Terrace, Hill City, Ks 67642



Knights of Columbus Shrimp Boil

Friday, March 28
5 - 7 pm

St. Patrick's Parish
206 N 5th St, Lincoln

Adults \$16 • Children Under 12 \$8

Raffling TWO halves of a hog & basic processing at Glasco Locker.
Tickets are \$1 each or 6 for \$5
Winners drawn Friday, March 28 at 7 pm
Everyone Welcome!





Ladies Spring Banquet
Sponsored by Beverly Community Church
Friday, March 28, 2025
6:30 p.m.
Beverly Community Church, Beverly

Speaker: Lorri Johnson
Theme: "Sisters in Christ"
What to Bring: Salad and a friend



TRINITY LUTHERAN CHURCH FISH FRY
At Hunter Community Center
Friday, March 28, 2025
5:00 pm to 7:00 pm



HOXIE
IMPLEMENT CO., INC.

(785) 675-3201

Factory Direct Prices on Heavy Duty Commercial Batteries and Baldwin Filters
For Cars, Trucks, Tractors, Etc.



Market-Place Kansas Reach



Serving central and western Kansas locations including:

Beverly, Stockton, Osborne, Hays, Fort Riley, Ellsworth, Wamego, Chapman, Salina, Manhattan, Junction City, Lincoln, Hill City, Wakeeney, Herington, Hope, White City, Council Grove, Abilene, Woodbine, Plainville, and surrounding areas.

Farm Ground for Sale

115 A of good
Mitchell County farm ground for sale.
Legal description is
S1/2 SW1/4 & NE 1/4 SW 1/4 34-9S-10W.
Asking price \$3650/acre.
A crop production report may be made available.
Call 402-750-2373

Kansas Classifieds

For Sale

Place your 25-word classified in the Kansas Press Association and 135 more newspapers for only \$300/ week. Find employees, sell your home or your car. Call the Kansas Press Association @ 785-271-5304 today!

Misc.

Attention: VIAGRA and CIALIS USERS! A cheaper alternative to high drugstore prices! 50 Pill Special - Only \$99! 100% guaranteed. CALL NOW: 1-866-481-0668

Misc.

We Buy Vintage Guitar's! Looking for 1920-1980 Gibson, Martin, Fender, Gretsch, Epiphone, Guild, Mosrite, Rickenbacker, Prairie State, D'Angelico, Stromberg. And Gibson Mandolins / Banjos. These brands only! Call for a quote: 1-877-560-1992

Misc.

CASH PAID FOR HIGH-END MEN'S SPORT WATCHES. Rolex, Breitling, Omega, Patek Philippe, Heuer, Daytona, GMT, Submariner and Speedmaster. These brands only! Call for a quote: 1-866-481-0636.

Misc.

GOT AN UNWANTED CAR??? DONATE IT TO PATRIOTIC HEARTS. Fast free pick up. All 50 States. Patriotic Hearts' programs help veterans find work or start their own business. Call 24/7: 1-877-560-5087

Misc.

BATH & SHOWER UPDATES in as little as ONE DAY! Affordable prices - No payments for 18 months! Lifetime warranty & professional installs. Senior & Military Discounts available. Call: 1-866-481-0747

Misc.

STOP OVERPAYING FOR HEALTH INSURANCE! A recent study shows that a majority of people struggle to pay for health coverage. Let us show you how much you can save. Call Now for a no-obligation quote: 1-888-519-3376 You will need to have your zip code to connect to the right provider.

Misc

INJURED IN AN ACCIDENT? Don't Accept the insurance company's first offer. Many injured parties are entitled to cash settlements in the \$10,000's. Get a free evaluation to see what your case is really worth. 100% Free Evaluation. Call Now: 1-888-920-1883

Misc

AGING ROOF? NEW HOMEOWNER? STORM DAMAGE? You need a local expert provider that proudly stands behind their work. Fast, free estimate. Financing available.

Call 1-877-589-0093 Have zip code of property ready when calling!

Misc

WATER DAMAGE CLEANUP & RESTORATION: A small amount of water can lead to major damage in your home. Our trusted professionals do complete repairs to protect your family and your home's value! Call 24/7: 1-877-586-6688. Have zip code of service location ready when you call!

Misc

NEED NEW WINDOWS? Drafty rooms? Chipped or damaged frames? Need outside noise reduction? New, energy efficient windows may be the answer! Call for a consultation & FREE quote today. 1-866-766-5558 You will need to have your zip code to connect to the right provider.

Farmers & Ranchers
Livestock Commission Co.

Total for the Week - Cattle - 4,634
Bulls - \$200.00 - \$212.00 Cows - \$142.00 - \$152.00

Strs		Hfrs	
300-400	\$445.00-457.50	300-400	\$440.00-450.00
400-500	\$425.00-435.00	400-500	\$370.00-380.00
500-600	\$440.00-450.00	500-600	\$335.00-347.00
600-700	\$355.00-368.00	600-700	\$310.00-322.00
700-800	\$312.00-323.00	700-800	\$269.00-278.50
800-900	\$270.00-282.00	800-900	\$253.00-264.50
900-1000	\$269.00-280.00	900-1000	\$235.00-247.00

Early Consignments
Thursday, March 27th
10 a.m start time

29 charX s&h, 500-600, home raise, vacc; 50 bulls & hfrs, 500-600; 33 s&h, 550, off cow, 2 round vacc, knife cut; 35 hfrs, 400-600, long wean, fall vaccs; 6 s&h, 700#'s, home raise, wean 6 weeks, vacc; 184 blk strs, 875-925, off rye, no grain, no silage; 300 s&h, 450-600, vaccs; 17 blk hfrs, 650-750, long wean, 2 round vacc, open; 56 mostly blk strs, 700-850; 40 s&h, 500-600, long wean, 2 round vacc; 60 strs, 500#'s, fall vacc, no imp.; 55 hfrs, 500#'s, fall vaccs, no imp.; 10 bwf/rwf hfrs, 700#'s, long wean, 3 round vacc; 69 charX s&h, 375-500, home raise, vaccs, open; 11 s&h, 550-600, wean, fence broke; 75 blk/bwf strs, 450-650, home raise, long wean, 2 round vacc, hot wire broke; 15 s&h, 400-550, home raise; 59 red hfrs, 600-800, open, 3 round vacc; 90 strs, 750-900, home raise, off wheat, vacc; plus more by sale time.

Special Cow Sales
Tuesday April 15, 2025
Tuesday May 6, 2025

In Stock Today

• Heavy Duty Round Bale Feeders

• Heavy Duty Feed Bunks

For a complete list of cattle for all sales check out our website at: www.fandrive.com

Sales Manager, Mike Samples
Office: 785-825-0211 Cell: 785-826-7884
Salina, Kansas

Listen to our markets on KSAL, Salina at 6:45 a.m. Mon. thru Fri.
For more information or to consign cattle call sale barn or:
Fieldman Representatives:
Kenny Briscoe • Lincoln, KS • 785-658-7386
Lisa Long • Ellsworth, KS • 620-553-2351
Cody Schafer • 620-381-1050
Auctioneers:
Kyle Elwood, Brandon Hamel, and Garren Walrod

GUN AUCTION

SATURDAY, APRIL 5 @ 9:00 A.M.
AUCTION LOCATION: 909 Auction Ave. Larned, KS 67550
350+ FIREARMS, COINS, AMMO & MORE!
ONLINE BIDDING AVAILABLE!

We Comply with
All State & Federal
Laws. NO Buyer's
Premium Onsite!

CARR

AUCTION & REAL ESTATE, INC.
909 AUCTION AVE. • P.O. BOX 300 • LARNED, KS 67550
Jim Froetschner • Chris Froetschner, Auctioneers
620.285.3148 www.carrauction.com

SCAN ME!

Your one stop shop for reaching Kansas!

Connecting communities across Kansas.

To advertise:
Contact 785-561-0637
Or marketplacekansas@gmail.com

SPRING

FORWARD

Sign by April 15 to Save!

SAVE

3%



SCAN ME

That discount adds up!

\$30,000 project? Save \$900
\$50,000 project? Save \$1,500
\$75,000 project? Save \$2,250

Even Bigger = Bigger Savings





Garages | Shops | Man-Sheds
Machine Shops | Ag Buildings

> QualityStructures.com

> 800-374-6988

Richmond, KS | Haven, KS

Contact to Advertise

785-561-0637

marketplacekansas@gmail.com

HORIZON

FARM & RANCH REALTY, LLC

1-888-825-1199 // www.horizonfarmranch.com

UPCOMING AUCTION

*233 Ac +/- 2 Tract Morris Co. Auction on March 27th in Herington, Kansas

AG LAND

*240 Ac +/- Jewell Co. Tillable. Call Levi! 785.275.2285
*4,800 Ac +/- Ranch w/ 30 Wind Turbines/Solar Income in Lincoln Co., Hunting & Farming. Call Ray or Clint!
*1,706 Ac +/- Ranch @ Delphos & Minneapolis. Call Ray!
*110 Ac +/- Cloud Co. Tillable. PENDING by Larry!
*197 Ac +/- Pasture, Tillable, Hunting. SOLD by Clint!

COMMERCIAL

*104 N. Nelson, Bennington, KS. Commercial Building. Call Ty!

HORIZON HOMES

*1027 N. 190th Rd., Minneapolis, KS. Call Grant! 785.577.3049
*500 N. Stark St., Bennington, KS. Call Samantha! 785.577.9878

CONTACT INFORMATION

Ray Swearingen - Broker/Owner (785) 452-8498
Clint Heller - Sales Agent (785) 545-5737



Ray/Broker



SCAN ME



Clint

Summer Job Opportunity!!



NATURAL RESOURCE
SUMMER INTERNS

KANSAS ASSOCIATION OF CONSERVATION DISTRICTS

CONTACT YOUR COUNTY TO APPLY

FULL TIME STUDENT, 16+
INTEREST IN CONSERVATION
PAID JOB FOR SUMMER 2025

VALID DRIVERS LICENSE
ABILITY TO WORK OUTDOORS
NO NIGHTS OR WEEKENDS!

WWW.KACD.NET/CONSERVATION-DISTRICTS.CFM

Please return applications to the
Graham County Conservation District Office
100 N. 12th Ave., Hill City, Ks
By Tuesday, April 15

AMA AUCTIONEERS MILLER & ASSOCIATES

1708 FARMS, GP EQUIPMENT AUCTION

Monday, April 7th, 2025 – 10:00 am

44958 County Road 42, Otis, CO 80743

5 1/2 Miles East of Otis, CO on Hwy 34 To Rd. XX, North 2 Miles

On Site Auction with Live and Pre-Auction Internet Bidding. Items with no internet bidding capabilities start at 10:00 am, items with internet bidding capabilities sell at approximately 12:30 pm.

Tractors, Trucks & Trailers sell after equip (Online Bidding Available)-18 JD 8370R MFWD, IVT, ILS, 3pt w/QH, Big 1000 PTO, 6 hyd, 420/85R34 frnt dls, 480/80R50 rear dls, RTK guidance equip, 3,691hrs, 2nd ownr, Demco SideQuest 1000gal. sddle tnks sells separate-11 JD 8260R MFWD PS, ILS, 3pt w/QH, Big 1000 PTO, 6hyd, 380/80R38 frnt dls, 480/80R50 rear dls, guidance ready, 6,386hrs, Demco SideQuest 1000gal sddle tnks sells separate-06 JD 9320 4wd, PS, 3pt w/QH, Big 1000 PTO, 4hyd, 480/80R50 dls, SF2 guidance equip, 9,219hrs, 800gal sddle tnks sells separate-93 Case IH 9250 4wd, PS, 3pt w/QH, Big 1000 PTO, 4hyd, 10,535hrs, Outback guidance equip-Zetor 5245 MFWD w/lidr, 3pt, PTO, 2hyd-98 KW W900L conv. semi, Cums N-14 Select, 13spd, dual line wet kit, 976k mi-05 Frghtr Columbia day cab semi, 14.0L 60 ser. Detroit, 10spd, dual line wet kit, 1M mi-95 Mack CH613 day cab semi, E7-350 Mack, 18spd, dual line wet kit, 1M mi-02 Frghtr Century conv. semi, 12.7L 60 ser Detroit, 10spd, dl line wet kit-92 Int 9400 TS w/ Crysteel 20' grn bx, RO tarp, rear hoist, 11.1L 60 ser. Detroit, 9spd, 408k mi, 2nd ownr-92 Int 9400 TS w/ Crysteel 20' grn bx, RO tarp, rear hoist, 11.1L 60 ser Detroit, 9spd, 382k mi, 2nd ownr-79 Chevy C65 TS w/20' grn bx & Westfield drill fill aug, rear hst, 427 V8, 582spd, 80k mi-74 Chevy C60 SA w/ Scott Midland 33' boom bed, 350 V8, 482spd, 81k mi-07 Aulick 42'x60" belt btm semi trlr, 54" belt, air ride, RO tarp, grn chtr-14 Wilson Patriot 102'x42'x72" sides live btm semi trlr, 48" belt, air ride, RO tarp-93 Wilson Pace Setter 96'x43'x66" sides hppr btm grn trlr, spring ride, elec RO tarp & traps-97 Hillsboro 300 100'x20" w/4' dove GN FB trlr-Harvest, Planting, Tillage & Support Equip sells after fertilizer equip (Online Bidding Available)-21 JD S780 cmbne, contour mstr, chppr, pwr. bin extensions, RTK guidance equip, 580/85R42 dls, 985/729hrs, 2nd ownr-20 JD 716C cm hd w/trsh reel, B&B 43' hdr trlr sells separate-13 JD 612C cm hd, trsh reel, Wemhoff 30' hdr trlr sells separate-15 JD 640D drpr hd, split PU reel, HydraFloat, trnsprts-Brent 1082 gm crt, RO tarp, 20" cmr aug-Orthmn 996 gm crt, 17" cmr aug-Amity 2500 6R30" beet dggr, spare prts included-Amity 3500 6R defoliator, spare prts included-Wstfld MK130-81 aug w/elec drive swng hppr-21 Hrvt Int 3pt 16/18R30" CCS plntr, elec V-Drvs, Ind. row swath cntrl, Delta Force hyd. dwn prsre, hyd. wng wght trnsfr, Ind. row fert shutoff w/Liquishift, pneumatic trsh whps, 1 ownr-JD 1890 42' air sdr w/1910 seed crt, 10" spng, dsc opnrs, 6 run w/blckgc mntrs, hyd drive mtr-JD 2680H 30' high spd dsc, cyl stop dpth set, hyd scrprs-JD 2210 42' sprng shnk field cult, wng ga whls, 3 bar hrws, rear htch, 12" swps-JD 200 42' crmbldr-Summers 42' coil pckr-Laney 13 shnk PT parabolic rppr-Quinstar TF3 26' Terra-Firm'r crmbldr-FixKng 28' chsl, Dglmn 3 bar hrws, NH3 htch-Sunflower 3670 35' blde mchne, pckrs, rear htch-13 Kuhn Krause Gladiator 1200T 3pt 12R30" strip till, chn bsks, red balls-12 Kuhn Krause Gladiator 1200T 3pt 12R30" strip till, chn bsks, red balls-SureFire 26gpm vrble rate liquid pmp-Dammer Diker 3pt 12R rppr w/pddles-3pt 30' 7 shnk inline rppr-JD 856 3pt 12R30" cult-JD 400 3pt 30' rtry hoe-Bestway Field Pro III 1200gal. spryr, 80' booms, 4 sect shutoff, 3 nzzle bodies on 20" cntrs, Raven 450 cntrls-Eilers 610 PT trok clsr-JD R15 15' btwng rtry mwr-Brown 12' bx scrpr-Cimarron 3pt 6' Indm dsc-UTV, Fertilizer & Chemigation Equip, Fuel Tanks & More Sells at Approx. 12:30 (Online Bidding Available)-21 Polaris 1000 Turbo S 4 Seat RZR, Dynamic X suspension, Navigation, PS, 721 original mi, 1 ownr-2700, 1700 & 1500gal poly pvt tnks-(2) 2500 & (1) 2800gal cone btm poly tnks on stnds-Ag-Chem 500gal. sddle tnks-Agri Inject 106gph chem pmp-(9) Agri Inject 53gph chem pmps-(2) Neptune 30gph chem pmps-(2) Agri Inject 100gal. chmgtrs-(4) fert tmsfr pmps w/meters-Honda GX390 gas mtr w/JohnBlue 3" pmp-10k gal. hrzntl fuel tnk on skids w/35gpm 110v pmp-3k gal. hrzntl fuel tnk w/35gpm 110v pmp-1k gal. hrzntl gas tnk w/110v pmp-500gal. hrzntl fuel tnk w/12v pmp-SB BP trlr w/500gal. fuel tnk-(2) 160gal. bulk oil tnks on stnds w/pneumatic pmps, hose reels & metering nzzles-160gal. bulk oil tnk on stnd-110gal. bulk oil tnk on stnd-SB 8' BP PU bx trlr w/Miller Bobcat wldr/gntr (278hrs) & oxy/acct. torch-Onan 20kw pto gen on trlr-Safe-T-Pull htch-Demco Side Quest sddle tnk mntng arms-Tools, Shop Equip & Farm Misc Sells at 10:00am (No Online Bidding)-Good assortment hnd & pwr tools-Clarke HD Plus 30 drwr tool bx-6 section 4'x8' pllt racking w/21 shlvs-JD AC2-80E5-1 upright air cmprsr-Milwaukee chop saw-floor jacks-Champion 5500w gen-Goodall parts wshr-anvil on stand-extension cords & jmpr cables-oil catch-HD tow rope-ATV sprys-E-Z-Roll gas wire rflr & svrl spools wire-T & elec. fnce psts-flex hose & Banjo valves-100gal. poly tnk-poly drp tnks-poly mix tnk-sprmlr nzzles & filters-new & used sprmlr gear bxs-trsh pmps-drill fill aug-mkr arms-mud lugs-Int. 1680 cmbne shields-JD S680 sm gm cnvcs-JD plstc cm hd snouts-hyd. cyls-grn drill scrtchrs-bull tongue shnks-JD MFWD fndrs-NH3 cooler-NH billy mwr deck-JD 1720 plntr prts-Artsway dggr prts-alum. ATV rmps-Port-A-Pottie-LP heater-smudge pot heater- 11.2-38 & 11.2-24 sprmlr tires- 7.60-15 & 9.5-16 implmnt tires-GoodYear 650/85R38 tire-Firestone 35.5L-32 floater tire-more

Owners: Trent & Jaccie Monk-Note: Trent & Jaccie have been farming alongside their family since 2007 in the Yuma area. They have decided to discontinue their farming operation and pursue other interests. The equipment has been well kept and is ready for a new home. Trent's brother Clint, his aunt & uncle and one neighbor have consigned a few items to the auction as well. Loader available on auction day and the next day 10am – 2pm. All items must be removed immediately as possession of property will be relinquished to new tenant. Lunch available auction day.

Auctioneers Miller & Associates
Chuck & Bryson Miller-Brush, CO-970-842-5575
www.AMAAuctions.com



Norton Livestock
Market, Inc.

Upcoming April sales for
Norton Livestock are on
Thursday starting at 1 p.m. as follows:
Thursday, April 3 – Regular Sale
Thursday, April 10 – Special calf & feeder
sale with Regular sale
Thursday, April 17 – Special breeding
stock & replacement heifer sale with
Regular sale
Thursday, April 24 – Special calf & feeder
sale with Regular sale
For more information or to consign call:
Jan Tien, Market Manager, at 785-567-8515;
or Fieldmen: Doak Brooks 785-567-7006;
Kolton Harting 785-202-0085;
or Matt McClain 785-871-2342.
See www.nortonlivestock.com
for further sale information.

General Public
Transportation
BUS

MONDAY - FRIDAY
8 a.m. - 4 p.m.
\$1.50 One Way
\$3 Round Trip

785-258-2956


Curb to Curb Service
Wheelchair Accessible
First Come, First Serve

This project is funded by the
KDOT Public
Transportation Program

Supported by KDOT,
City of Herington, Fares and
General Donations

Locally
Serving You:

Colleen Hardiek
Baylee Pfeifer



Garrett
INSURANCE

110 W. Main St., Hill City, KS 67642
Ph: 785-421-2127



PIONEER

WITH YOU
FROM THE
WORD GO

River Hills Seed, Inc.
SHELDON DAUGHERTY
785-392-4027 • 845 Avenue B, Minneapolis, KS 67467

*** Trademarks and service marks of Dow AgroSciences, DuPont or Pioneer, and their affiliated companies or their respective owners. © 2019 PHH 190-1143 3 WFTWTV

Market-Place Kansas



Local Deals!

785-561-0627

marketplacekansas@gmail.com

LET US HELP PROTECT YOUR DREAMS.



Brian Tajchman, Agent, Inc.

Brian J. Tajchman, Agent

104 Nw 3rd S. Abilene

btajchman@amfam.com

(785) 263-2512

24-HOUR CLAIMS REPORTING & CUSTOMER SERVICE

1-800-MYAMFAM (692-6326)

AMERICAN FAMILY INSURANCE

HOME | AUTO | LIFE | BUSINESS | FARM & RANCH AMFAM.COM

American Family Mutual Insurance Company, S.I. and its Operating Companies, American Family Insurance Company, American Family Life Insurance Company, 6000 American Parkway, Madison, WI 52762 510996 - Rev. 7/17 62015 - 16146547

Optometric Assistant

Must have computer skills and like to serve others.
Send your resume to:
G. Kyle Gwinner
P.O. Box 339
Ellsworth, KS 67439
or email: DrKyleOD@gmail.com



* Ad designed by Ellsworth County I/R



AUTO PARTS

1891 E. 18 Highway
Lincoln, KS
785-524-4421
800-870-4423



LAND AUCTION

Thursday, March 27, 2025 @ 7:00pm
Herington Community Bldg, 810 S. Broadway, Herington, KS

Tract 1: The SW/4 of 17-16-6, Herington, Kansas

105 +/- Tillable Acres with the balance in hay meadow and waterways

Located: HWY 56, 1/2 mile East of Delavan along 2500th Rd, Herington, KS

Taxes are \$1308.12 on 153.7 +/- taxable acres.

Tract 2: The N/2 of the NW/4 of 32-15-7, Wilsey, KS

23 +/- Tillable Acres, 56 +/- acres in pasture and meadow

Location: 1900th Rd & P Ave., 4 miles North of HWY 56, Wilsey, Kansas


Taxes are \$426.62 on 79.1 +/- taxable acres.

Possession immediately following the 2025 fall harvest, subject to tenants rights on the pasture and meadow. Buyer receives 2025 cash rent and responsible for 2025 property taxes.

Both tracts offer crop production, grass-land, and recreation! Excellent Access!

Online bidding available!

SELLER: Marcella M. Hermstein Estate,
Kent Oleen Executor- Oleen Law Firm



SCAN ME

HORIZON

FARM & RANCH REALTY, LLC

1-888-825-1199

www.horizonfarmranch.com



L-2500201



LAND AUCTION

SIMULCAST LIVE AND ONLINE

160.17± Acres • Graham County, Kansas

McKenna Youth and Activities Center | 311 Main Street | Palco, Kansas

Tuesday, April 1, 2025 | 10:00 AM

Bidding starts | March 31, 2025

Bidding closes | April 1, 2025 at close of live event

To register and bid go to: WWW.FNCBID.COM

-- Productive cropland -- Full possession at closing --

-- Good access -- Selling surface rights only --

For more information on property details, please contact:

Monty Smith, AFM, Agent
Phone: (785) 623-6701
MSmith@FarmersNational.com

Richard Boyles, CGA, Agent
Phone: (785) 639-6285
RBoyles@FarmersNational.com
www.FNCRealEstate.com

Vesper Community Center

BINGO

SATURDAY, April 5th
DOORS OPEN @ 5:30pm
BINGO STARTS @ 7:00pm

Play for as little as \$6
CASH PRIZES

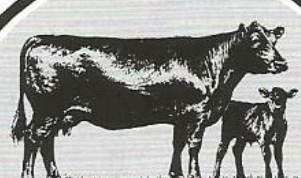


Hamburgers
sundaes
pie, floats
& more !

785-524-2466 www.vespercc.org

1247 N 120th Rd Lincoln KS 67455

Concessions are sold by volunteers to fundraise solely for community purposes



TJ RANCH

Registered Angus

Since 1955

X Selling registered Angus bulls with balanced EPDs and great dispositions

X Sires include: Tehama Patriarch, DB Iconic, Millars Duke 816, Baldrige Compass

X EPDs enhanced by **ANGUSGS**
Powered by Neogen GeneSeek

X Purchased bulls stay free until May 1

BRYAN TROYER

Glade, Kansas 67639

(785) 543-2655 • (785) 302-1222 - cell



Protecting Farmers Since 1988
785.735.9485
kippesinsurance.com

KIPPES INSURANCE AGENCY, INC.



NOW HIRING

EXPERIENCED DIESEL SERVICE TECHNICIANS



 SCAN THE QR CODE
OR VISIT US IN-PERSON
TO LEARN MORE

595 N US-77
HERINGTON
(785) 258-3707

FOR SALE

2022 CHEROKEE WOLF PUP 18TO CAMPER



2022 Cherokee by Forest River Wolf Pup 18TO Limited 23' travel trailer. Comes with everything you need to get you started camping. Upgraded queen Wilderness mattress, Anderson “No-Sway” Weight Distribution Hitch. Brake trailer control, rear camera. Lots of extras. Don't let camping season start without you this year. Can sleep up to 5. Very clean unit. Call 785-531-1072 to view or for questions.

Retired person seeks small Kansas farm

80-160 acres, looking for \$1000 per acre. Structures optional. All responses kept confidential.

Thanks,
RBARRAT@EARTHLINK.NET

1997 Chevrolet Silverado 4x4 For Sale

- 350 Motor
- High Miles
- 90% Rubber
- Interior Very Good

\$2,750⁰⁰



785-280-1796

**916 N Fourth Ave.
Hill City
- \$260,000 -**
ALL NEW REMODEL! 4 bed, 3 bath, ATT 2 car garage, large back yard

**NEW LISTING**


**NEW LISTING**

**24061 40 HWY
- \$125,000 -**
INVESTMENT/BUSINESS OPPORTUNITY Former bowling alley, automotive repair, 2014 Morton Building

NEW PRICE


427 Grant St., Quinter- \$160,000
4 bed, 2 bath, oversized 2 car garage/ shop, large fenced yard

**321 N Fourth Ave, Hill City
- \$125,000 -**
4 bed, 3 bath, 2 car garage,
NEW LISTING

MOTIVATED SELLERS!


821 W. Main St., Hill City - \$139,500-
5 bed, 2 bath, beautiful deck, 1/2 acre lot


**NEW PRICE**

**111 S. Parnell, Utica
- \$89,000 -**
2 bed, 1 bath, new malarkey roof, large corner lot, 4 car garage

**421 S 6th St WaKeeney - \$199,000 -**
5 bed, 2 bath, ht/ac oversized 2 car garage, & much more!

**312 Grant St., Quinter- \$197,000**
4 bed, 2 bath, Beautiful Brick home, Pergola back yard, main floor laundry

**24004 J Rd
WaKeeney
- \$489,000 -**
11 acres, updated 4 bed home, close to town, Perfect equine or livestock property!

**SOLD**



COLDWELL BANKER
EXECUTIVE REALTY
www.coldwellbanker.com

Tammy Riedel, Realtor
785-769-6100
tammyriedel63@gmail.com





456 Highway 77
785-258-8024

Nutrien **Ag Solutions®**

Nutrien Ag Solutions of Hill City offers:

- Custom Application
- Dry & Liquid Fertilizers
- Crop Protection
- Seed
- Cash/Carry Chemical Prices
- 6% Incentive Bearing Prepay

*For all your crop inputs,
 needs, or questions, CONTACT:*

785.421.6275 (office)
 785.421.8278 (Bryce Bahe)

General Public Transportation
 for all residents of Lincoln County



Call to schedule a ride:
 (855) 577-4337
 Monday—Friday
 8:00 a.m.—5:00 p.m.

First come, first served basis
 All trips have equal priority
 Funded in part by KDOT Public Transit Dept.

www.salinacitygo.com

Market-Place Kansas

*"Your one stop shop for
 reaching Kansas"*

785-561-0637
marketplacekansas@gmail.com

ADVERTISE

Lincoln County Hospital

Neighbors Helping Neighbors



785.524.4403

www.lincolncountyhospital.net

Lincoln Medical Clinic
Mon., Tues., Thurs., Fri.; 8:00 a.m. - 5:00 p.m.
Wed.; 7:00 a.m. - 7:00 p.m.

785.524.4474

Sylvan Medical Clinic
Saturday's 8:30 a.m. - 1:00 p.m.

Appointments and Walk-Ins accepted at both Clinics

WALK-IN CLINIC | 8AM-6PM | MON-SAT

DOCTORS   
WITHOUT DELAY

 ALL PATIENTS,
ALL AGES WELCOME
NO APPOINTMENT NECESSARY

 SHORT WAIT, QUICK RESULTS
ONSITE DIGITAL IMAGING, LABS &
EMERGENCY ROOM

 FULL SERVICE CLINIC
CONVENIENTLY LOCATED IN
STATE-OF-THE-ART HOSPITAL

Rooks County Health Center
1210 N. Washington, Plainville, KS 67663
DocsWithoutDelay.com | 785.688.DOCS (3627)

A Tradition of Caring Since

Chapman Valley M
A Non Profit Skilled Nursing

Administr
Amanda Jea
1009 Marshall • PO Box
Chapman, KS 6
785-922-
chapval@chapmanvalleyma
christyloy@chapmanvalleyma



Jay C. Minear
Feed Specialist

Lincoln Building Supply

785-524-4416
Cell: 785-658-5918
11 North 5th • Lincoln, KS 67455




HUBBARD
an **Altech** company

84% of Kansans believe government should be required to publish **public notices** in print and digital **newspapers** as a service to the community

“ The right of the people to keep a **free & transparent** press is obligatory for us citizens. Public notices **belong** in **newspapers!** ”

Leavenworth County resident

KansasPublicNotices.com
*2024 Kansas State Study; Conducted by Coda Ventures





High Plains Farm Credit

YOUR CROPS.
YOUR LIVESTOCK.
WE'RE READY.

Making agricultural loans for over 100 years!

Contact us TODAY!
785-625-2110



Jay Ziegelmeier

HighPlainsFarmCredit.com | Strong on Ag Lending

Remember to check your tire tread regularly.
Come see us for a quote on new tires.
Stay safe!



456 Highway 77
Herington
785-258-8024

DENTAL Insurance
Great coverage for retirees.

Coverage for **cleanings, fillings, crowns** – even **dentures!** Get **dental insurance** from Physicians Mutual Insurance Company.



Get your **FREE** Information Kit

KENDRA JOHNSON

BROKER

420-7282

REALTY@GMAIL.COM

ROCK REALTY
VE. LINCOLN, KS 67455



COUNTRYSIDE VETERINARY SERVICES

Quality and
Compassionate
Veterinary Care for
Your Pets & Livestock

781 Hwy 43, Hope
785-366-6587
Monday - Friday
9 a.m. - 5 p.m.

Feel

Dif



Salina Surgical Hospital

401 Santa Fe, Salina, KS

Salina Surgical Hospital is PROUD to be partially owned by local community involved physicians.

Post Rock Aviation



Clay Haring
(785) 524-5240

Lincoln, KS

Helping farmers feed America.

NET PROFIT GENETICS -- MORE THAN

• Genetic prepotency

• Feed efficiency proven

SCHURRTOP RANCH

175 Angus & Charolais Bulls--Yearling

Friday, March 28, 2025 ♦ 1:00 p

Tri-State Livestock ♦ McCook, Nebraska

World Record Results!

Schurrtop Bull Customers Achieved These Results —

Beef Empire Days • Live & Carcass Show

Grand Champion Overall Heifer & Reserve Grand Champion Overall Steer

Schurrtop Efficiency Works!

Calf Fed Steers — Gain: 4.88 lbs/Day — Feed Efficiency: 4.54 lbs. Gain is HIGHER than #Feed/#Gain — Payweight: 1,499 lbs. \$100/ Pen of Customer Steers Fed — 100% Choice and Prime — \$156/

40+ years of Feed Efficiency Testing bred in • 50+ years of Carcass, Gain

The majority of our sires are Residual Feed Intake or progeny tested for effici

THICK, HIGH PERFORMANCE & FEED EFFICIENCY



BAR R JET BLACK 5063
Thickness, depth, total performance, outcross genetics with all the extras! Top efficiency.



SCHURRTOP BEEF MAKER 9598 P
Biggest Ribeye bull with outstanding marbling — in the breed!

The Schurrtop Difference...

Consistency

SCHURRTOP \$/Head -- Net Return & Quality Premiums
 SCHURRTOP Growth -- Pounds & Feed Efficiency
 SCHURRTOP Calving Ease -- Short Gestation & Problem Free
 SCHURRTOP Carcass Value -- Muscle & Marbling

100% Schurrtop-sired cattle recently harvested (3,729 head averaged):

• 99% Choice or Higher
 • 32% Prime
 • Average Ribeye 14.4"
 • 2.8 USDA Yield Grade

See Bull Videos Prior to Sale or Bid Live on Sale Day

DVAuction

To view videos and catalogs, go to

www.schurrtop.com

Marty Schurr | (308) 362-4330

Email: marty@schurrtop.com

Ryan Schurr | (308) 320-4067

Kay Schurr | (308) 569-2520

Email: schurrtop@schurrtop.com

SCHURRTOP

ANGUS & CHAROLAIS

Sure Performance Cattle

40842 Farnam Rd, Farnam, NE 69029

Proud Ranch Partner





See our Ranch video schurrtop.com

• BULLS SELL

• Bulls: 1 Perform

• Free or Assis





Snoring hurting your relationship?

Snore / Sleep Apnea, and Restless Leg therapy included in our Sleep Study program

Ask Your Doctor For a Referral Today (785) 754-5179

Hamit Land & Auction, Inc.

Don Hamit - Broker Stockton Office - 785-425-6585
Auctioneer Russell Office - 785-483-7777
Cell Hays Office - 785-621-4101
785-425-8123 www.hamitauction.com

Farm & Ranches
Farm Equipment
Antiques - Estates
Residential
Commercial





HOMESTEAD VILLAGE APARTMENTS

NOW LEASING
1100 N. Broadway St. Herington, KS

- 1 and 2 bedroom units
- Laundry hookups
- Snow removal & lawn care
- All utilities included plus cable

- Appliances furnished
- Single detached garage
- Pet with pet deposit
- Clubhouse on site

For more information contact Mgr. Lori Dornbusch
(785)258-2956 • Lori.Hilltop@yahoo.com



SEIRER’S CLOTHING

Rural boutique established in 1984 and located in the heart of Kansas. Offering a variety of hand-selected items for the whole family.

USE CODE: “MARKET” ONLINE & RECEIVE 10% OFF ORDER!

BRANDS WE CARRY:	ARIAT	KEREN HART	CORKYS FOOTWEAR
	BRÜMATE	SKECHERS	FLAG & ANTHEM
	JEN & CO	SILVER JEANS CO	SOUTHERN LADY
	MARY MEYER	SPLENDID IRIS	STONEWALL KITCHEN

SERVICES WE OFFER: DRY CLEANING & TUXEDO RENTAL



SEIRER’S CLOTHING

EST. 1984



IN STORE

(785) 524-4752
143 W Lincoln Ave
Lincoln Center, KS 67455
Mon-Fri **Sat**
10am-6pm 10am-4pm



ONLINE

shopseirers.com
24/7
Follow Us On
Facebook & Instagram



COFFEE BAR

Enjoy a Coffee, Caffe Latte, Cappuccino, Latte Macchiato, Flat White, Mocha, Americano, and more - hot or iced!