

Free - Pick One Up!

# MARKET-PLACE KANSAS

Issue 4 2/26/2025

785-561-0637

marketplacekansas@gmail.com

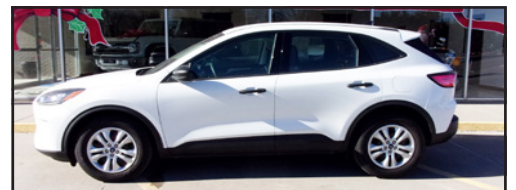
jlsnewsgroup.com

## TUBBS & SONS FORD SALES, INC.

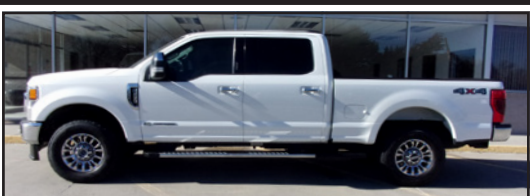
810 South Range  
Ave Colby, KS  
1-800-369-3673  
785-460-6746



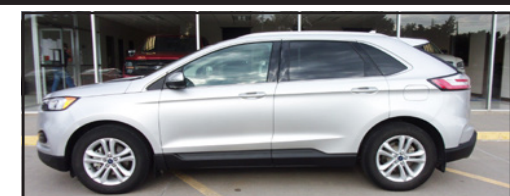
2019 Lincoln Navigator Reserve, Black w/ Black Leather, 3.5L Eco Boost, Power Running Boards, 360 Degree Camera, Revel Audio, 45K Miles. #01617 **\$43,850**



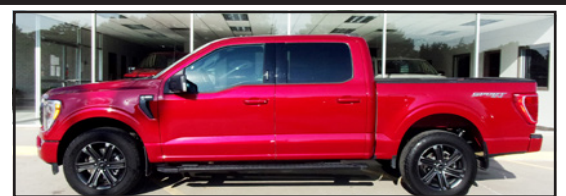
2022 Ford Escape 4dr Hatchback FWD, Oxford White w/ Grey Cloth, 1.5L Eco Boost, Power Steering, Power Brake, A/C, Tilt Wheel, Speed Control, 16K Miles. #05123 **\$21,850**



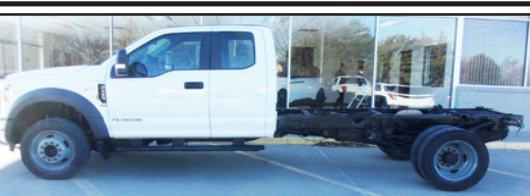
2021 Ford H.D. F250 Crewcab Lariat 4X4, Star White w/ Black Leather, 6.7L Powerstroke Turbo Diesel, Chrome Package, Extended Running Boards, 80K Miles. #09363 **\$50,850**



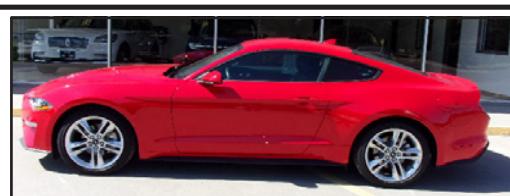
2019 Ford Edge SEL FWD, Silver w/ Black Leather, 2.0L 4 Cylinder, Eco Boost, Heated Steering Wheel, Navigation, Adaptive Cruise Control, 110K Miles. #09422 **\$13,950**



2022 Ford F150 XLT Sport Supercrew, Red w/ Black Cloth, 2.7L Eco Boost, Sport Appearance, Tow Package, Heated Seats, Dual Zone Climate Control, 25K Miles. #13216 **\$43,850**



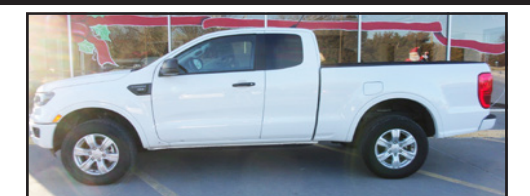
2019 Ford F550 Supercab Chassis XL 4X2, White w/ Medium Earth Grey Cloth, 6.7L Turbo Diesel, 4:88 Limited Slip Axle, Power Equipment, 160K Miles. #14449 **\$25,500**



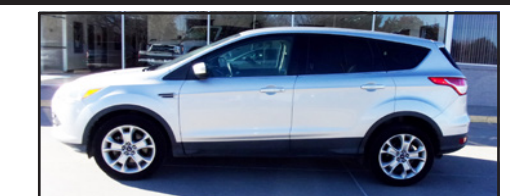
2021 Ford Mustang Premium, Race Red w/ Ebony Leather, 2.3L Eco Boost, Manual Transmission, Heated/Cooled Seats, Hood Vents, 25K Miles. #17367 **\$25,850**



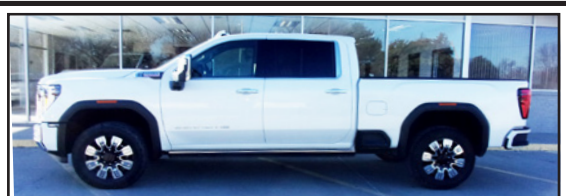
2019 Ford F250 Supercab XL 4WD, White w/ Gray Cloth, 6.2L V-8, Daytime Running Lights, Upfitter Switches, Crownline Bale Bed, 181K Miles. #35678 **\$28,850**



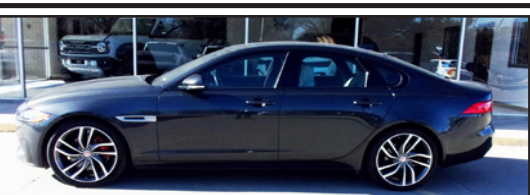
2022 Ford Ranger Supercab XLT 4WD, White w/ Ebony Premium Cloth, 2.3L Eco Boost, Daytime Running Lights, 18 Gallon Fuel Tank, 37K Miles. #38604 **\$28,850**



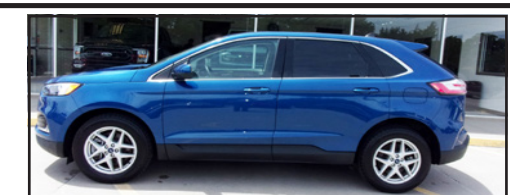
2013 Ford Escape SEL 4WD SUV, Silver w/ Black Leather, 2.0L Eco Boost, Local Owner, AM/FM/Satellite Radio, Dual Zone Climate Control, 116K Miles. #40440 **\$9,995**



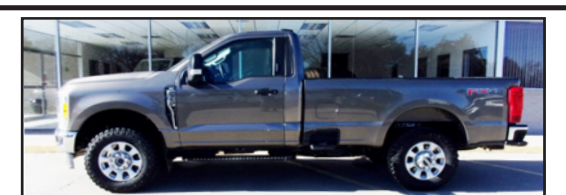
2024 GMC Sierra Crewcab Denali 4WD, White Frost Tri-coat w/ Jet Black Leather, 6.6L Duramax, Denali Reserve Package, Technology Package, 16K Miles. #44663 **\$83,850**



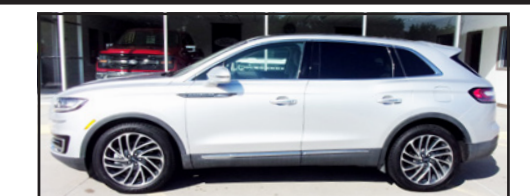
2017 Jaguar XF 4D, Storm Grey w/ Oyster Leather, V-6, Memory Seats, Heated Steering Wheel, Moonroof, Keyless Entry, Lane Keeping Assist, 53K Miles. #45022 **\$20,850**



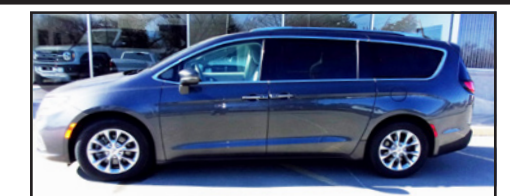
2022 Ford Edge SEL AWD, Atlas Blue w/ Black Leather, 2.0L Eco Boost, Dual Zone Climate Control, Heated Seats, Heated Steering Wheel, 21K Miles. #48252 **\$28,500**



2023 Ford H.D. F350 Regular Cab XLT 4X4, Stone Grey w/ Medium Dark Slate Cloth, 7.3L V-8 Gas, FX4 Off Road Package, Platform Running Boards, 39K Miles. #56285 **\$43,850**



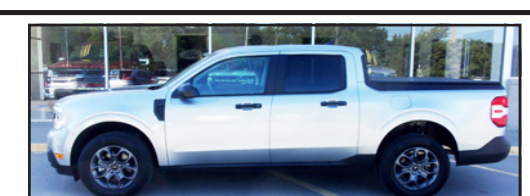
2019 Lincoln Nautilus AWD, Silver w/ Cappuccino Leather, 2.0L, Driver Assistance Pack, Panoramic Vista Roof, Heated/Cooled Front Seats, 62K Miles. #62401 **\$22,850**



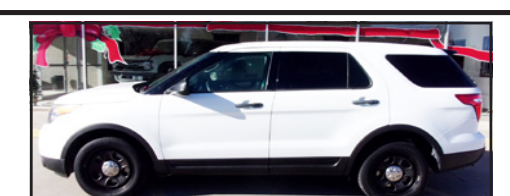
2021 Chrysler Pacifica Touring L, Gray w/ Gray Leather, 3.6L V-6, Slow & Go, AM/FM/Satellite Radio, Heated Seats, Heated Steering Wheel, 68K Miles. #64386 **\$23,850**



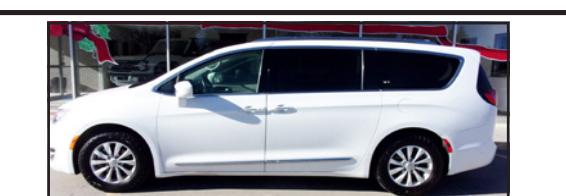
2018 Jeep Wrangler Sahara 4dr 4X4, White w/ Black Cloth, 3.6L V-6, Hard Top, Power Door Locks, Power Windows, Power Mirrors, Cast Aluminum Wheels, 96K Miles. #75458 **\$26,850**



2022 Ford Maverick Hybrid XL FWD, Iconic Silver w/ Black Onyx & Dark Slate Cloth, 2.5L Hybrid, Power Locks, Power Windows, Rearview Camera, 13K Miles. #86310 **\$23,850**



2015 Ford Explorer Police Interceptor, White w/ Black Cloth, 3.5L V-6, AM/FM Radio, Heat/AC, Power Locks, Power Windows, Cruise Control, Local Owner, 105K Miles. #91477 **\$9,995**



2018 Chrysler Pacifica Touring L Plus, White w/ Tan Leather, 3.6L V-6, Heated Seats, Second Row Captains, Stow & Go, AM/FM/Satellite Radio, Dual Zone Climate Control, 119K Miles. #91582 **\$15,850**



Vesper Community Center  
**BINGO**  
 SATURDAY, Mar 1st  
 DOORS OPEN @ 5:30pm  
 BINGO STARTS @ 7:00pm

Play for as little as \$6  
**CASH PRIZES**



Hamburgers  
 sundaes  
 pie, floats  
 & more!

785-524-2466 www.vespercc.org  
 1247 N 120th Rd Lincoln KS 67455  
 Concessions are sold by volunteers to fundraise solely for community purposes



**ALPHA AG AIR LLC.**  
 Tracy Hillegeist 785-577-3017  
 Lucas Baumbach • 785-243-4803  
 Beverly, Kansas



**KENDRA JOHNSON**  
 BROKER

**POST ROCK REALTY**

785-420-7282  
 POSTROCKREALTY@GMAIL.COM  
 POST ROCK REALTY  
 129 E LINCOLN AVE. LINCOLN, KS 67455

Market-Place Kansas



*Your guide to locally owned shops, restaurants and small businesses around!*

785-561-0627  
 marketplacekansas@gmail.com

**15th ANNIVERSARY**  
 Celebration & SALE  
 Saturday, March 1, 2025  
 10 am to noon

Come in and enjoy a cinnamon roll, coffee, or water

A drawing for a gift certificate will be held  
 ½ price sale on everything in the store!

**UMC Second Chances**  
 218 N Pomeroy Ave, Hill City, KS 67642  
 Thursday - Friday 10 am - 4 pm  
 Saturday 10 am - 12 pm

**HARRIS CROP INSURANCE, LLC**



785-479-5593 or  
 Toll Free 888-408-7487

A family-owned and operated crop insurance agency serving central Kansas since 1981.

1207 Hwy. 15, Abilene, Kansas 67410  
 www.harriscropinsurance.com  
 This agency is an equal opportunity provider.

**HORIZON FARM & RANCH REALTY, LLC**  
 1-888-825-1199 // www.horizonfarmranch.com

**AG LAND**

- \*240 Ac +/- Jewell Co. Tillable. Call Levi! 785.275.2285
- \*4,800 Ac +/- Ranch w/ 30 Wind Turbines/Solar Income in Lincoln Co., Hunting & Farming. Call Ray or Clint!
- \*1,706 Ac +/- Ranch @ Delphos & Minneapolis. Call Ray!
- \*110 Ac +/- Cloud Co. Tillable. Call Ray! 785.452.8498
- \*197 Ac +/- Pasture, Tillable, Hunting. SOLD by Clint!

**COMMERCIAL**

- \*104 N. Nelson, Bennington, KS. Commercial Building. Call Ty!

**HORIZON HOMES**

- \*1027 N. 190th Rd., Minneapolis, KS. Call Grant! 785.577.3049
- \*500 N. Stark St., Bennington, KS. Call Samantha! 785.577.9878

**CONTACT INFORMATION**

Ray Swearingen - Broker/Owner (785) 452-8498  
 Clint Heller - Sales Agent (785) 545-5737





**KVK INC.**  
 Heating & Air Conditioning  
 Residential & Commercial  
 We Service & Warranty Parts For All Makes



**24-HOUR EMERGENCY SERVICE**

**kvkinc.biz**  
 Master Mech.  
 Licensed  
 Bonded  
 Insured

**YORK**  
 Ask About Our Discount Club Membership




785-257-3224

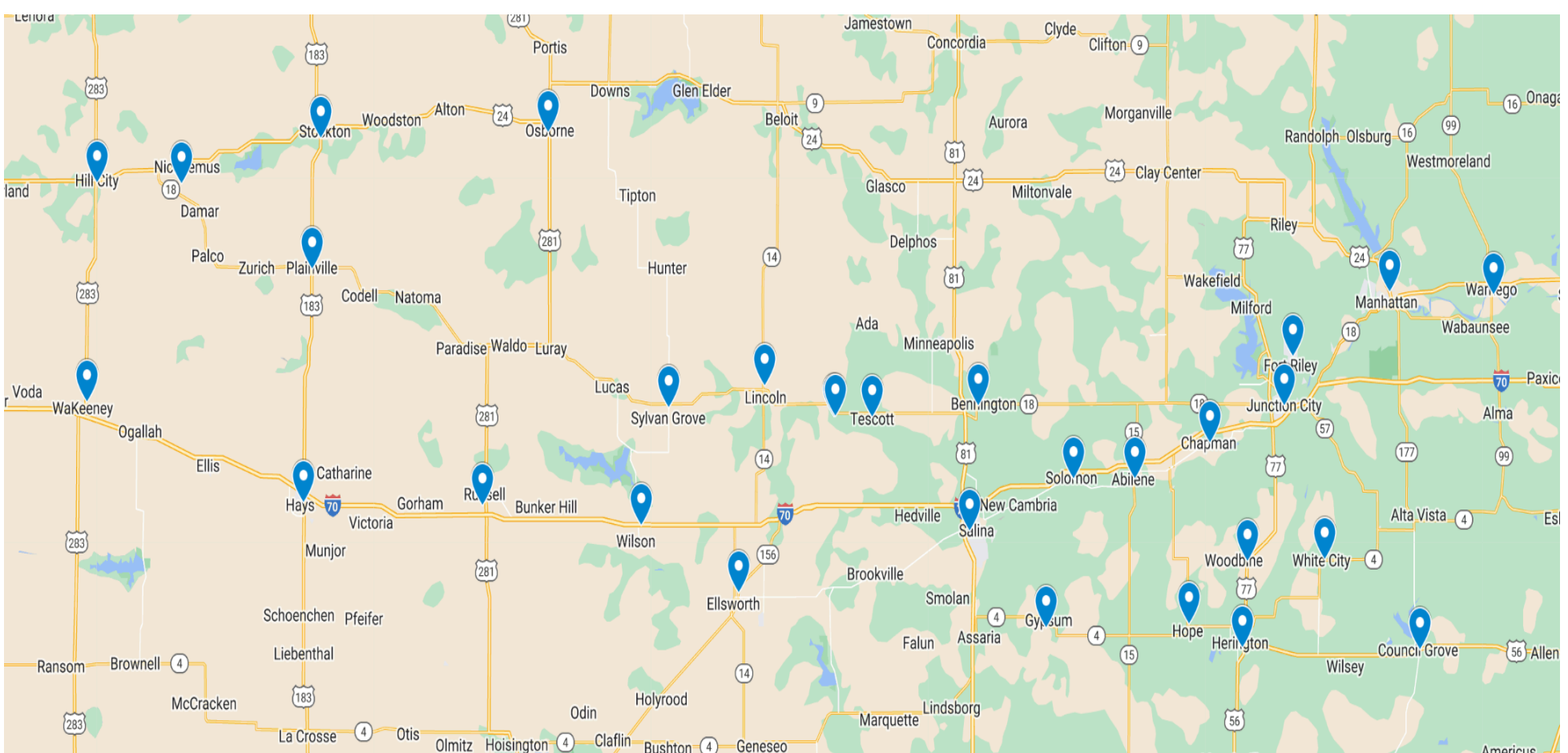
Save the Date!

**Dawson Place**  
 in partnership with  
**Clinkscales ELDER LAW PRACTICE**

will present a free seminar on  
**ESSENTIAL DOCUMENTATION AND ESTATE PLANNING**

Tuesday, April 15th  
 6:00 pm

# Market-Place Kansas Reach



*Serving central and western Kansas locations including:*

*Beverly, Stockton, Osborne, Hays, Fort Riley, Ellsworth, Wamego, Chapman, Salina, Manhattan, Junction City, Lincoln, Hill City, Wakeeney, Herington, Hope, White City, Council Grove, Abilene, Woodbine, Plainville, and surrounding areas.*



## Farm Ground for Sale

115 A of good Mitchell County farm ground for sale. Legal description is S1/2 SW1/4 & NE 1/4 SW 1/4 34-9S-10W. Asking price \$3650/acre. *A crop production report may be made available.* Call 402-750-2373

## Kansas Classifieds

### For Sale

Place your 25-word classified in the Kansas Press Association and 135 more newspapers for only \$300/ week. Find employees, sell your home or your car. Call the Kansas Press Association @ 785-271-5304 today!

### Misc.

Attention: VIAGRA and CIALIS USERS! A cheaper alternative to high drugstore prices! 50 Pill Special - Only \$99! 100% guaranteed. CALL NOW: 1-866-481-0668

### Misc.

We Buy Vintage Guitar's! Looking for 1920-1980 Gibson, Martin, Fender, Gretsch, Epiphone, Guild, Mosrite, Rickenbacker, Prairie State, D'Angelico, Stromberg. And Gibson Mandolins / Banjos. These brands only! Call for a quote: 1-877-560-1992

### Misc.

CASH PAID FOR HIGH-END MEN'S SPORT WATCHES. Rolex, Breitling, Omega, Patek Philippe, Heuer, Daytona, GMT, Submariner and Speedmaster. These brands only! Call for a quote: 1-866-481-0636.

### Misc.

GOT AN UNWANTED CAR??? DONATE IT TO PATRIOTIC HEARTS. Fast free pick up. All 50 States. Patriotic Hearts' programs help veterans find work or start their own business. Call 24/7: 1-877-560-5087

### Misc.

BATH & SHOWER UPDATES in as little as ONE DAY! Affordable prices - No payments for 18 months! Lifetime warranty & professional installs. Senior & Military Discounts available. Call: 1-866-481-0747

### Misc.

STOP OVERPAYING FOR HEALTH INSURANCE! A recent study shows that a majority of people struggle to pay for health coverage. Let us show you how much you can save. Call Now for a no-obligation quote: 1-888-519-3376 You will need to have your zip code to connect to the right provider.

### Misc

INJURED IN AN ACCIDENT? Don't Accept the insurance company's first offer. Many injured parties are entitled to cash settlements in the \$10,000's. Get a free evaluation to see what your case is really worth. 100% Free Evaluation. Call Now: 1-888-920-1883

### Misc

AGING ROOF? NEW HOMEOWNER? STORM DAMAGE? You need a local expert provider that proudly stands behind their work. Fast, free estimate. Financing available.

Call 1-877-589-0093 Have zip code of property ready when calling!

### Misc

WATER DAMAGE CLEANUP & RESTORATION: A small amount of water can lead to major damage in your home. Our trusted professionals do complete repairs to protect your family and your home's value! Call 24/7: 1-877-586-6688. Have zip code of service location ready when you call!

### Misc

NEED NEW WINDOWS? Drafty rooms? Chipped or damaged frames? Need outside noise reduction? New, energy efficient windows may be the answer! Call for a consultation & FREE quote today. 1-866-766-5558 You will need to have your zip code to connect to the right provider.

## Farmers & Ranchers Livestock Commission Co.

**Total for the Week - Cattle - 228**  
**Bulls - \$179.00 - \$190.50 Cows - \$155.00 - \$164.00**  
**DIDN'T HAVE A THURSDAY SALE THIS WEEK**

**Early Consignments**  
**Thursday, February 27th**  
**10 a.m start time**

90 angus hfrs, 650-800, long wean, off wheat; 25 angus str, 600-800, long wean, off wheat; 150 blk str, 800-900, off rye; 300 mostly blk str, 400-600, home raise, long wean, 2 round vaccs, off cover, green; 161 s&h, 550-750, home raise, wean 60+days, vaccs, open; 25 blk str, 850-875, home raise, long wean, vacc, off rye; 150 blk hfrs, 825-850, home raise, long wean, vacc, off rye; 60 blk/red s&h, 600-800, home raise, long wean, 2 round vacc, open; 80 mostly blk s&h, 500-650, home raise, wean Nov.28, 2 round vacc, open, off rye; 250 blk/bwf s&h, 550-650, wean Nov.1, vacc; 53 blk s&h, 550-850, long wean, vacc, open, hot wire broke; 65 hfrs, 750-800, no sort; 30 s&h, 600, home raise, wean 60+days, 2 round fall & spring vacc, open; 60 blk str, 900-925, no sort; 30 blk/red angus s&h, 500-550, wean Nov.; 23 blk/bwf s&h, 600-800, wean Dec. fall vacc, open; 62 str, 850, no sort; 12 s&h, 750-850, long wean; 50 blk s&h, 650-850, wean Oct. 2 round vacc, open; 39 blk/red s&h, 600-800, wean 60 days, fall vaccs, open; 30 blk str, 650-800, long wean, fall vacc; plus more by sale time.

**Don Johnson Angus, 29th Annual Performance Bull Sale**  
**Monday, March 3, 2025**

**6:30pm start time**  
**Offering 60 long yearling bulls & 10 eighteen- month old bulls.**

Get your horses consigned to our Spring Spectacular Horse Sale.  
Deadline is March 1st. Sale Day is Saturday, May 17, 2025.

**Special Cow Sales**  
**Tuesday March 18, 2025**  
**Tuesday April 15, 2025**  
**Tuesday May 6, 2025**

**Don Johnson Bull Sale**  
**Monday March 3, 2025**

**New Frontier Bull Sale**  
**Saturday March 22, 2025**

### In Stock Today

- Heavy Duty Round Bale Feeders
- Heavy Duty Feed Bunks

For a complete list of cattle for all sales check out our website at: [www.fandrive.com](http://www.fandrive.com)

**Sales Manager, Mike Samples**  
**Office: 785-825-0211 Cell: 785-826-7884**  
**Salina, Kansas**

**Listen to our markets on KSAL, Salina at 6:45 a.m. Mon. thru Fri.**  
**For more information or to consign cattle call sale barn or:**

### Fieldman Representatives:

**Kenny Briscoe • Lincoln, KS • 785-658-7386**  
**Lisa Long • Ellsworth, KS • 620-553-2351**  
**Cody Schafer • 620-381-1050**

### Auctioneers:

**Kyle Elwood, Brandon Hamel, and Garren Walrod**

Your one stop shop for reaching Kansas!

Connecting communities across Kansas.

To advertise:

Contact 785-561-0637

Or [marketplacekansas@gmail.com](mailto:marketplacekansas@gmail.com)





## Hamit Land & Auction, Inc.

**Don Hamit - Broker**     **Stockton Office - 785-425-6585**  
**Auctioneer**  
**Cell**  
**785-425-8123**

**Russell Office - 785-483-7777**  
**Hays Office - 785-621-4101**  
**www.hamitauktion.com**

**Farm & Ranches**  
**Farm Equipment**  
**Antiques - Estates**  
**Residential**  
**Commercial**






## Burdick Meat Market and Locker

- Meat Processing & Curing
- Locker Storage
- Sausages
- Quality Retail Meat

**416 Main St,  
Burdick  
785.983.4818**




# 84%

of Kansans believe government should be required to publish **public notices** in print and digital newspapers as a service to the community

*“The right of the people to keep a free & transparent press is obligatory for us citizens. Public notices belong in newspapers!”*

Leavenworth County resident ”

**KansasPublicNotices.com** 

\*2024 Kansas State Study, Conducted by Coda Ventures



## Norton Livestock Market, Inc.

Upcoming February sales for Norton Livestock are on **Thursday** starting at 1 p.m. as follows:

**Thursday, March 6** – Regular Sale  
**Thursday, March 13** – Regular Sale  
**Thursday, March 20** – Replacement & Bred Stock w/ Regular Sale  
**Thursday, March 27** – Regular Sale

For more information or to consign call:  
**Jan Tien, Market Manager, at 785-567-8515;**  
**or Fieldmen: Doak Brooks 785-567-7006;**  
**Kolton Harting 785-202-0085;**  
**or Matt McClain 785-871-2342.**  
 See [www.nortonlivestock.com](http://www.nortonlivestock.com) for further sale information.

# DENTAL Insurance

Great coverage for retirees.

Coverage for **cleanings, fillings, crowns** – even **dentures!** Get dental insurance from Physicians Mutual Insurance Company.



**Get your FREE Information Kit**

It's easy! Call today  
**1-844-259-8917**  
[Dental50Plus.com/LincolnKS](http://Dental50Plus.com/LincolnKS)

Product/Features not available in all states. Contact us for complete details about this insurance solicitation. To find a network provider, go to [physiciansmutual.com/find-a-provider](http://physiciansmutual.com/find-a-provider). This specific offer not available in CO, NY, VA - call 1-800-969-4788 or respond for a similar offer in your state. Certificate C254/B465, C250A/B438 (ID: C254D; PA: C254PA); Insurance Policy P154/B469, P150/B439 (GA: P154GA; OK: P154OK; TN: P154TN). 6347

## Ag Land - New Price!

**625 Acres Irrigated - Thomas County, KS**  
 Located 7 miles North and 2 miles East of Oakley, KS. The Buyer shall receive all of the 2025 growing wheat crop and all applied fertilizer on the open cropland acres. The Buyer shall also receive all of the Seller's mineral rights. **\$4,600/Acre**

**162 Acres Prime Cropland - Thomas County, KS**  
 Located 7 miles North and 3 miles East of Oakley, KS. The Buyer shall receive all of the Seller's interest in the mineral rights, including the Seller's 1/2 interest in the production from an existing oil well. **\$3,250/Acre** ([www.homelandre.com](http://www.homelandre.com))



**Rock L. Bedore**  
 (785) 443-1653  
 1055 S. Range  
 Colby, KS  
*“The Land Man”*



## Market-Place Kansas



# Local Deals!

**785-561-0627**

**marketplacekansas@gmail.com**

**916 N Fourth Ave. Hill City - \$260,000 -**  
 ALL NEW REMODEL! 4 bed, 3 bath, ATT 2 car garage, large back yard  
**NEW LISTING**

**24061 40 HWY - \$125,000 -**  
 INVESTMENT/BUSINESS OPPORTUNITY Former bowling alley, automotive repair, 2014 Morton Building  
**NEW LISTING**

**427 Grant St., Quinter - \$170,000**  
 4 bed, 2 bath, oversized 2 car garage/shop, large fenced yard

**200 W Wertz, Utica - \$92,500 -**  
 3 bed, 2 bath, 2.79 ac, large kitchen  
**UNDER CONTRACT**

**821 W. Main St., Hill City - \$139,500 -**  
 5 bed, 2 bath, beautiful deck, 1/2 acre lot  
**MOVE IN READY**

**111 S. Parnell, Utica - \$89,000 -**  
 2 bed, 1 bath, new malarkey roof, large corner lot, 4 car garage  
**NEW PRICE**

**708 Southwood Ct, Quinter - \$199,000 -**  
 3 bed, 3 1/2 bath, Malarkey shingles, large corner lot, Great location  
**UNDER CONTRACT**

**421 S 6th St WaKeeney - \$199,000 -**  
 5 bed, 2 bath, ht/ac oversized 2 car garage, & much more!  
**NEW LISTING**

**312 Grant St., Quinter - \$197,000**  
 4 bed, 2 bath, brick home, Pergola back yard, main floor laundry  
**PRICE IMPROVEMENT**

**24004 J Rd WaKeeney - \$489,000 -**  
 11 acres, updated 4 bed home, close to town, Perfect equine or livestock property!  
**NEW PRICE**



**COLDWELL BANKER**  
 EXECUTIVE REALTY  
[www.coldwellbanker.com](http://www.coldwellbanker.com)

**Tammy Riedel, Realtor**  
**785-769-6100**  
**tammyriedel63@gmail.com**





**LET US HELP PROTECT YOUR DREAMS.**



**Brian Tajchman, Agent, Inc.**  
 Brian J. Tajchman, Agent  
 104 Nw 3rd S. Abilene  
 btajchman@amfam.com  
 (785) 263-2512

24-HOUR CLAIMS REPORTING  
 & CUSTOMER SERVICE  
 1-800-MYAMFAM (692-6326)



HOME | AUTO | LIFE | BUSINESS | FARM & RANCH | AMFAM.COM

American Family Mutual Insurance Company, S.I. and its Operating Companies, American Family Insurance Company, American Family Life Insurance Company, 6500 American Parkway, Madison, WI 53762 010986 - Rev. 7/17 020115 - 16146547

**Jim's Metal Roof Coatings**  
 Leak Repair, bin tops,  
 Quonset roofing metal/galvanized  
 Asphalt Shingle roof coating  
 Painting exterior steel or aluminum  
 Statewide service - Free Estimates  
 785-201-7622



1891 E. 18 Highway  
 Lincoln, KS  
 785-524-4421  
 800-870-4423



# We Are Hiring



Are you interested in a healthcare management career? We are looking for the right individual to join our team as Housekeeping Manager!

Please visit our website for further position benefits, requirements, and job duties.

Applications will be accepted until March 4th. Apply online at [www.gchospital.org](http://www.gchospital.org) under the Careers tab.

Contact Caley VanLoenen at 785-421-2121 or [cvanloenen@gchospital.org](mailto:cvanloenen@gchospital.org) with questions. EOE



## Contact to Advertise

785-561-0637  
[marketplacekansas@gmail.com](mailto:marketplacekansas@gmail.com)

# ONLINE-ONLY LAND AUCTION



**80.87 +/- ACRE DRYLAND FARM**  
**GRAHAM COUNTY, KANSAS**

**BIDDING OPENS**  
 THURSDAY, FEBRUARY 27TH  
 10:00 A.M. CST

**BIDDING BEGINS TO CLOSE**  
 FRIDAY, MARCH 7TH  
 10:00 A.M. CST

**BID ONLINE: [BID.AGWESTLAND.COM](http://BID.AGWESTLAND.COM)**


- MAJORITY CLASS II & III SILT LOAM SOILS.
- CURRENTLY DRILLED TO WHEAT.
- THE TENANT HAS A 3-YEAR LEASE ON THE CROPLAND, OFFERING AN EXCELLENT FIXED-INCOME STREAM FOR THIS PROPERTY.




**CLAYTON ESSLINGER**  
 FARM & RANCH SPECIALIST  
 NORTON, KANSAS  
 (785) 202-2066  
[CLAYTON.ESSLINGER@AGWESTLAND.COM](mailto:CLAYTON.ESSLINGER@AGWESTLAND.COM)

PO BOX 1098, HOLDREGE, NE 68949 | 866-995-8067 | [AGWESTLAND.COM](http://AGWESTLAND.COM)


## One team working together for your heart.




David Battin, M.D.  
 CARDIOLOGIST




Karil Bellah, M.D.  
 CARDIOLOGIST




Elias Quintos, M.D.  
 CARDIOVASCULAR  
 THORACIC SURGEON




Ronald Eller, PA  
 CARDIOVASCULAR  
 SURGERY




Justin Long, PA  
 CARDIOVASCULAR  
 SURGERY



Kaleigh Ramey, PA  
 CARDIOLOGY



Julia Jennings, APRN  
 CARDIOLOGY




Angela Bogart, APRN  
 TAVR CLINIC COORDINATOR



The Heart Center at Salina Regional Health Center is one team working together for your heart. It's for one simple reason: patients throughout north-central Kansas deserve comprehensive heart care, close to home. You can trust the skill and expertise of our cardiovascular surgeons and cardiologists, and the care and compassion of our nurse practitioners, physician assistants, nurses, and staff.

The Heart Center is an accredited Chest Pain Center by the American College of Cardiology, providing early, accurate, and life-saving diagnoses, as well as procedures such as bypass surgery, stents and angioplasty; TAVR (transcatheter aortic valve replacement); treatment for atrial fibrillation with the minimally invasive WATCHMAN™ procedure; and cardiac rehabilitation.

Whether you need general cardiac care provided in our clinic or a surgical procedure at Salina Regional Health Center, we are one team working together for your heart. For an appointment or more information, please visit [heartcenter.srhc.com](http://heartcenter.srhc.com).



501 S. Santa Fe Ave., Suite 380 | Salina, KS  
 Cardiothoracic Surgery: 785-452-7562 / Cardiology: 785-452-6492

**Carports, Sheds, Garages,  
 Cabins, Steel Buildings, RV-  
 Shelters.**


**We deliver/Install all over  
 Kansas!!!! Free Quotes!!!**

## Storage Solutions-Hays

(785) 639-8880  
[haysstoragesolutions.com](http://haysstoragesolutions.com)








# Sale

**Monday, March 10  
1 p.m.**

**Heartland Regional Stockyards  
907 NW 3rd St NW, Plainville**



*Complimentary Lunch Begins at 11 a.m.*

- Selling 100 Yearling Bulls
- 11 Registered Heifers
- 60 Commercial Replacement Heifers

Broadcasted online on DVAuction.com  
Website: Dixangus.com  
Contact Cody 785 476-5168 or Jeff 476-5030



## NOW HIRING

EXPERIENCED DIESEL SERVICE TECHNICIANS



SCAN THE QR CODE OR VISIT US IN-PERSON TO LEARN MORE

595 N US-77  
HERINGTON  
(785) 258-3707



# FARM & RANCH REALTY, INC.



## 640+ AC IRRIGATED CROPLAND

*ABSOLUTE*

# LAND AUCTION

## GRAHAM COUNTY, KANSAS

### TUES, MARCH 4, 2025 @ 10:30 AM, CST

**AUCTION LOCATION:**  
4-H BUILDING  
HILL CITY, KS

**SELLER:**  
NIBLOCK TRUST

**LEGAL DESCRIPTION:**  
ALL OF SECTION 11-8-21

**FSA INFO:**  
IRRIGATED - 527.23 acres  
DRYLAND - 63.20 acres  
RIVER BOTTOM - 34.93± acres  
CROPS: 169.42 ac in Alfalfa & Buyer will receive 100% of 2025 cuttings  
MINERAL RIGHTS: All Seller's interest will go to the Buyer.  
POSSESSION: Date of closing.



**IRRIGATION INFO:** All irrigation equipment is included. See website for well information.

South Fork of Solmon River runs thru this property. GREAT HUNTING POTENTIAL!!



CALL TRAVIS WEAVER @ 719-342-2997

## UPCOMING AUCTIONS



- 02/25/25 – 1,875± acres Gove & Logan Counties cropland, grass & CRP – selling in 4 tracts
- 03/04/25 – 640± acres Graham County, KS irrigated w/section sprinkler, immed. poss
- 03/11/25 – 7,200± ac Gove County, KS cropland, farm headquarters and beautiful country – 24 tracts
- 03/18/25 – 930± acres Yuma County, CO Grass, cropland, CRP w/ prod – 3 tracts
- 03/28/25 – 2,000± ac Irrigated, Dryland & Grass –Cheyenne County, KS & Yuma County, CO

## JUST LISTED

- GH –160± ac cropland, 8 mi N& ½ E of Hill City NE/4 of Sec 1-7-23
- CN –160± ac cropland, N of Bird City. Immediate possession SW/4 of Sec 20-2-37
- NT – 320± ac cropland, grass & CRP, S of Clayton & E of Jennings, immediate possession SE/4, E/2NW/4 & W/2NE/4 in Section 32-4-25

**FOLLOW US ON SOCIAL MEDIA**



**DRONE VIDEOS ONLINE**  
[www.farmandranchrealty.com](http://www.farmandranchrealty.com)



## FARM & RANCH REALTY, INC.

PO BOX 947 • COLBY, KS 67701  
800-247-7863  
**DONALD L. HAZLETT**  
Broker/Auctioneer

Whether you are looking to BUY or SELL, Private treaty or auction

CALL J.D. HININGER  
785-567-8019



**“When you list with Farm & Ranch, it’s as good as SOLD!”**

