

Free - Pick One Up!

# MARKET-PLACE KANSAS

Issue 2 2/12/2025

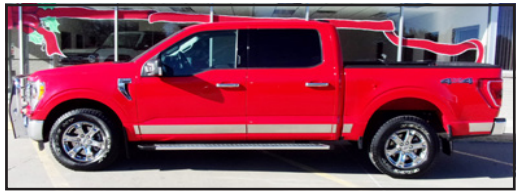
785-561-0637

marketplacekansas@gmail.com

jlsnewsgroup.com

## TUBBS & SONS FORD SALES, INC.

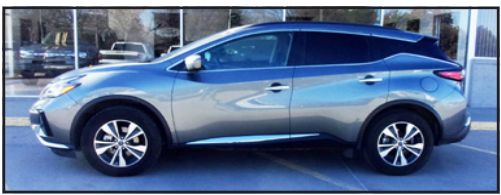
810 South Range  
Ave Colby, KS  
1-800-369-3673  
785-460-6746



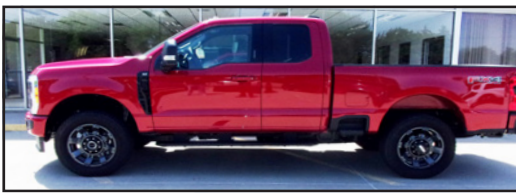
2022 Ford F150 Supercrew XLT 4WD, Race Red w/ Slate Cloth, 3.5L Eco Boost, Remote Start, XLT Chrome Package, Trailer Tow, 40/Console/40, Sprayed In Bedliner, 36 Gallon Fuel Tank, Grill Guard, 23K Miles. #02180 **\$43,850**



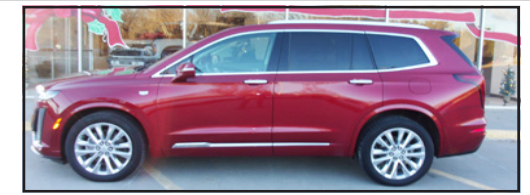
2023 Ford Mustang Mach-E Premium, Grey w/ Black Leather, Electric, Nite Pony Package, Charger Included, 91 KW Extended Battery, 9K Miles. #04147 **\$32,850**



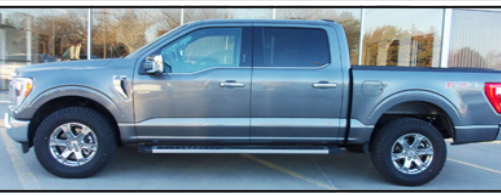
2023 Nissan Murano SV AWD, Grey w/ Black Leather, V-6, Local Owner, Navigation, Bluetooth, AM/FM/Satellite Radio, Heated Seats, 32K Miles. #10210 **Fresh Arrival**



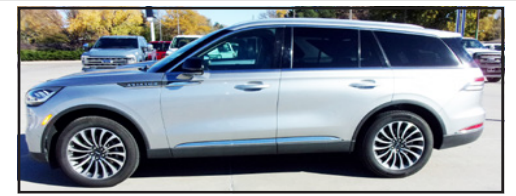
2023 Ford F250 Supercab XLT 4WD, Rapid Red w/ Medium Dark Slate Cloth, 7.3L V-8 Engine, Sport Appearance Package, 20" Dark Carbonized Aluminum Wheels, 518 Miles. #11312 **\$59,850**



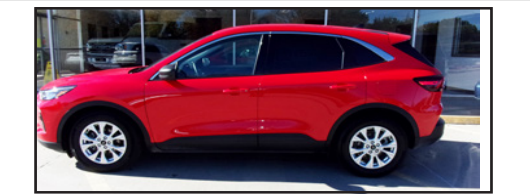
2020 Cadillac XT6 Premium Luxury 4dr AWD, Red w/ Sandstone Leather, 3.6L, Heated/Cooled Seats, Rear DVD, Power Sunroof, Cast Aluminum Wheels, 84K Miles. #12077 **\$27,850**



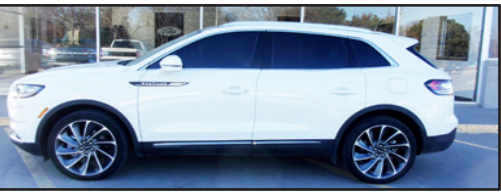
2022 Ford F150 Supercrew Lariat, Carbonized Grey w/ Grey & Black Leather, 3.5L Eco Boost, 501A, Lariat Chrome Package, Heated/Cooled Seats, 55K Miles. #12555 **\$45,850**



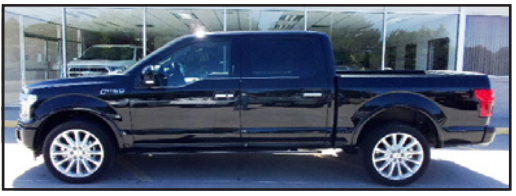
2022 Lincoln Aviator Reserve SUV, Silver Radiance w/ Black Leather, 3.0 V-6 Eco Boost, Heated/Cooled Seats, Heated Steering Wheel, 50K Miles. #14478 **\$48,850**



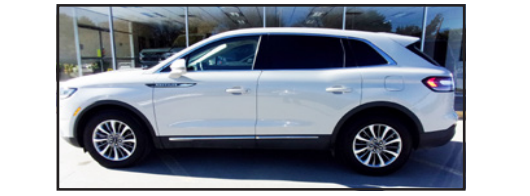
2024 Ford Escape Active 4dr FWD, Race Red w/ Ebony Cloth, 1.5L 4 Cylinder Eco Boost, Cold Weather Package, Heated Seats, Heated Steering Wheel, 18K Miles. #15737 **\$26,850**



2022 Lincoln Nautilus Reserve AWD, White Platinum w/ Java & Espresso & Ash Leather, 2.7L V-6, Heated/Cooled Seats, Heated Steering Wheel, 26K Miles. #19620 **Fresh Arrival**



2020 Ford F150 Supercrew Limited, Agate Black w/Camelback TuTone Leather, 3.5L V-6 High Output EcoBoost, Power Running Boards, 80K Miles. #21037 **\$44,850**



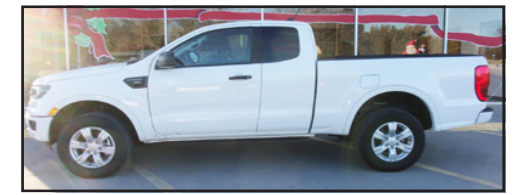
2022 Lincoln Nautilus 4dr FWD, Ceramic Pearl w/ Sandstone Lincoln Soft Touch, 2.0L 4 Cylinder Eco Boost, Premium Package, Built In Navigation, Power Tilt & Telescopic Steering Wheel, 27K Miles. #23833 **\$31,850**



2022 Ford Escape SEL 4dr AWD, Ice Blue Silver w/ Ebony ActiveX, 1.5L Eco Boost, 10 Speaker B&O Audio System, Wireless Charging, 13K Miles. #25320 **\$27,850**



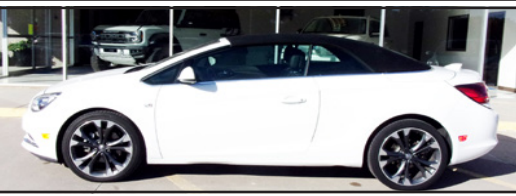
2016 Ford Mustang GT Coupe, Deep Impact Blue w/ Ebony Cloth, 5.0L V-8, Deck Lid Spoiler, 6 Speed Automatic, Black Painted Aluminum Wheels, Power Seat, Dual Exhaust, LED Fog Lamps, Rear View Camera, 12K Miles. #36479 **\$26,850**



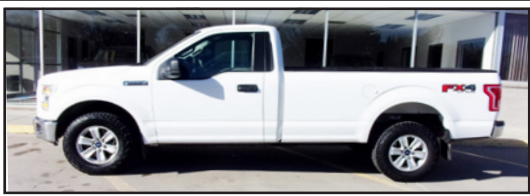
2022 Ford Ranger Supercab XLT 4WD, White w/ Ebony Premium Cloth, 2.3L Eco Boost, Daytime Running Lights, 18 Gallon Fuel Tank, 37K Miles. #38604 **\$32,500**



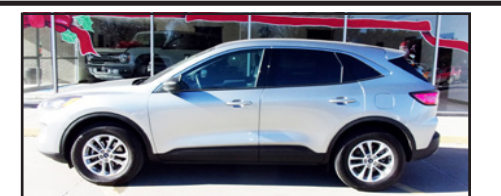
2023 Ford Escape Active 4dr FWD, Oxford White w/ Ebony Cloth, 1.5L Eco Boost, Remote Decklid Release (Power), Remote Start, Cast Aluminum Wheels, 13K Miles. #43126 **\$28,850**



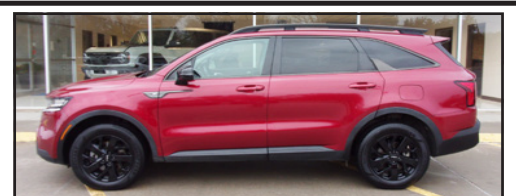
2018 Buick Cascadia Premium Convertible 2dr, White w/ Black Leather, Black Top, 1.5L Eco Tech, Leather Trim, Power Doors, Power Locks, Power Windows, Power Mirrors, Power Seats, Power Convertible Top, Premium Navigation, 72K Miles. #44082 **\$15,850**



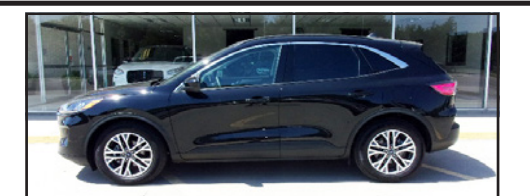
2017 Ford F150 Regular Cab XL 4X4, Oxford White w/ Grey Cloth, 5.0L V-8, Power Equipment Group, SYNC, Cruise Control, 3.55 E-Locking Rear Axle, 99K Miles. #56001 **\$16,850**



2022 Ford Escape SE 4dr AWD, Ingot Silver w/ Dark Earth Grey Cloth, 1.5L Eco Boost, SE Trim, Heated Front Seats, Heated Mirrors, 15K Miles. #70110 **\$25,850**



2022 Kia Sorento XLine, Red w/ Black Leather, 4 Cylinder, X-Line S, Dual Zone Climate, Dual Heated Seats, Navigation, AM/FM/Satellite Radio, 61K Miles. #85094 **\$25,850**



2022 Ford Escape SEL FWD, Black w/ Black Leather, 1.5L Eco Boost, 18" Aluminum Wheels, Mini Spare, Roof Rack Rails, Ford Co-Pilot 360 Assist, Navigation, 5K Miles. #99671 **\$28,850**





**Sunday, February 16**  
**Pancake Day**  
11 am - 7 pm

Bethlehem Lutheran Church  
Parish Hall  
308 N Indiana • Sylvan Grove

- Serving Pancakes • Whole Hog Sausage
- Scrambled or Fried Eggs
- Homemade Desserts • Drinks

Free Will Donation to Support Mission Projects



**Storage Solutions of Hays**



- Sheds • Carports
- Garages • Cabins
- Portable Buildings

We deliver anywhere in central and western Kansas

785-639-7368 • www.shedsofhays.com

**HARRIS CROP INSURANCE, LLC**



785-479-5593 or  
Toll Free 888-408-7487

A family-owned and operated crop insurance agency serving central Kansas since 1981.

1207 Hwy. 15, Abilene, Kansas 67410  
www.harriscropinsurance.com

*This agency is an equal opportunity provider.*



**COUNTRYSIDE VETERINARY SERVICES**

Quality and Compassionate Veterinary Care for Your Pets & Livestock

781 Hwy 43, Hope  
785-366-6587  
Monday - Friday  
9 a.m. - 5 p.m.

**HOXIE**  
IMPLEMENT CO., INC.



**(785) 675-3201**

**Factory Direct Prices on Heavy Duty Commercial Batteries and Baldwin Filters**

For Cars, Trucks, Tractors, Etc.

**Hilltop Community Center**

*Herington's gathering place for a tasty noon meal and great conversation!*

Dine in or carry out

- Meals on Wheels Program
- Fitness Center for Over 60
- Indoor Walking Track
- Scheduled Activities
- Independent Senior Living, 1-2 Bedroom Apartments
- General Public Transportation Bus Service

Call 785-258-2956 for All Information  
2 South A. Street, Herington  
Monday-Friday 8 a.m. - 4 p.m.



**Marion County Charity Auction**

**Saturday, February 22, 2025**  
**Pilsen Community Center**

Meal 6 p.m.  
Silent Auction 6 p.m.  
Live Auction 7 p.m.



**SOLD!**

*All Funds Raised Benefit Marion County Charities and Individuals in need!*

**Burdick Meat Market and Locker**

- Meat Processing & Curing
- Locker Storage
- Sausages
- Quality Retail Meat



416 Main St,  
Burdick  
785.983.4818

**FOR SALE**

1828 acres farm & grassland all in Winfield township, Osborne County, KS, for Harold Wiegert Trust.


Friday, Feb 21st @ 2pm

From Osborne, KS. 10 Miles S on 281 Hwy to Co. Rd. 408 then 3 ¼ Miles E on 408 around the curve then 1 ½ Miles S to the farm site on the W side of the road.

**A DEER HUNTING PARADISE AS WELL AS AN EXCELLENT CATTLE RANCH OPPORTUNITY!**

woltersauctionandre.com/auction-listings

**WOLTERS Auction and Realty**



Col. Jim Wolters, Broker & Auctioneer  
Auctioneer Rich Fairbank

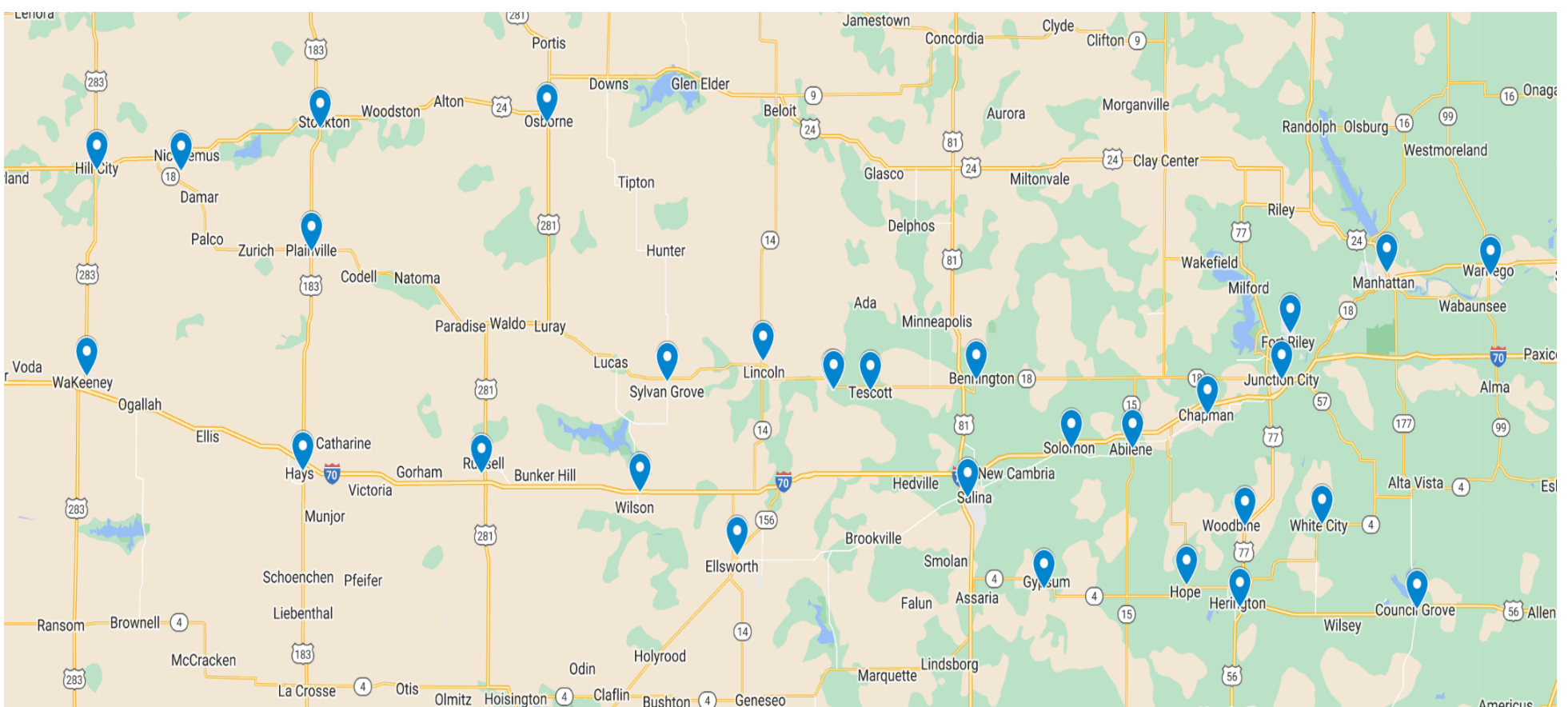
Home	627 Market Street	Business
(785) 346-2524	Portis, KS 67474	(785) 346-2071

**First National Investment Professionals**

**DAN COOK**

112 North Main  
Hope, KS  
785-366-7225  
Fax 785-366-7333  
dan.l.cook@ampf.com

# Market-Place Kansas Reach



*Serving central and western Kansas locations including:*

*Beverly, Stockton, Osborne, Hays, Bennington, Fort Riley, Wilson, Russell, Ellsworth, Gypsum, Wamego, Chapman, Salina, Manhattan, Junction City, Lincoln, Hill City, Wakeeney, Herington, Hope, White City, Council Grove, Abilene, Woodbine, Beverly, Tescott, Sylvan Grove, Plainville, Nicodemus, and surrounding areas.*



FARM & RANCH REALTY, INC.

**640+ AC IRRIGATED CROPLAND**  
**ABSOLUTE LAND AUCTION**  
**GRAHAM COUNTY, KANSAS**  
**TUES, MARCH 4, 2025 @ 10:30 AM, CST**

**AUCTION LOCATION:**  
4-H BUILDING  
HILL CITY, KS

**SELLER:**  
NIBLOCK TRUST

**LEGAL DESCRIPTION:**  
ALL OF SECTION 11-8-21

**FSA INFO:**  
IRRIGATED AC: 527.23  
DRYLAND AC: 63.20  
GRASS/WASTE AC: 34.93±  
CROPS: 169.42 ac planted to 2025 Alfalfa & Buyer will receive 100% of the crop.  
MINERAL RIGHTS: All Seller's interest will go to the Buyer.  
POSSESSION: Date of closing.

**IRRIGATION INFO:** All irrigation equipment is included. See website for well information.

South Fork of Solmon River runs thru this property. GREAT HUNTING POTENTIAL!!

CALL TRAVIS WEAVER @ 719-342-2997

**UPCOMING AUCTIONS**

02/14/25 - 320 acres Thomas County, KS irrigated & dryland cropland, N of Brewster

02/21/25 - 685± acres Cheyenne County, KS cropland, grass & CRP - NW of St. Francis on Hwy 27 - selling in 4 tracts

02/25/25 - 1,875± acres Gove & Logan Counties cropland, grass & CRP - selling in 4 tracts

03/04/25 - 640± acres Graham County, KS irrigated w/section sprinkler, immediate possession

03/11/25 - 7,200± ac Gove County, KS dryland & improv - 24 tr

03/18/25 - 960± acres Yuma County, CO cropland & grass - 3 tracts



**OPEN HOUSE FEB. 15**  
684 Co Rd 50, Gove, KS  
FROM 10:00 AM TO NOON  
(see salebill for directions)

684 Co Rd 50  
Gove, KS

**FOLLOW US**

ON SOCIAL MEDIA

**DRONE VIDEOS ONLINE**

[www.farmandranchrealty.com](http://www.farmandranchrealty.com)

**FARM & RANCH REALTY, INC.**  
PO BOX 947 • COLBY, KS 67701  
800-247-7863  
**DONALD L. HAZLETT**  
Broker/Auctioneer

Whether you are looking to BUY or SELL, Private treaty or auction

CALL J.D. HININGER  
785-567-8019

"When you list with Farm & Ranch, it's as good as SOLD!"

## Farmers & Ranchers Livestock Commission Co.

Total for the Week - Cattle - 4,898

Bulls - \$180.00 - \$190.00    Cows - \$137.00 - \$149.50

Strs		Hftrs	
300-400	\$460.00-470.00	300-400	\$403.00-415.00
400-500	\$419.00-430.00	400-500	\$355.00-367.00
500-600	\$355.00-406.00	500-600	\$325.00-335.00
600-700	\$335.00-346.50	600-700	\$284.00-295.00
700-800	\$301.00-312.00	700-800	\$261.00-271.00
800-900	\$271.00-283.00	800-900	\$238.00-249.75
900-1000	\$240.00-252.00	900-1000	NO TEST

Early Consignments  
Thursday, February 13th  
10 a.m start time

161 s&h, 550-750, home raise, wean 60+days, 2 round vacc, open; 53 blk s&h, 550-850, long wean, vacc, open, hot wire broke; 65 hfrs, 750-800, no sort; 60 blk/red s&h, 600-800, home raise, long wean, 2 round vacc, open; plus more by sale time.

Early Consignments Special Cow Sale  
Tuesday February 18 - 11 a.m start time  
Get your cows/heifers consigned.

Replacement Heifers: 150 blk hfrs, home raise, OCHV'd, tract checked, sim/ang.; plus more by sale time.

Bred Cows/Cow Pairs: 55 blk ang. cows, 3-6 years, spring cows, home raise, calve 3-1 for 60 days, bred ang.; 12 red ang. cows, 5 years - solid, home raise, bred char; 100+100 blk mostly 3-4years, few 5-6 years, Stratford sired calves, calves born Sept.1-Nov.5, calves worked & knife cut; 70 blk cows, 3-8 years, bred Judd Ranch & Nelson angus bulls, calve March 1 - 60 days; 60 blk spring bred cows, 4 years - solid, bred blk or Hereford; 40 blk angus cows; plus more by sale time.

Get your horses consigned to our  
Spring Spectacular Horse Sale.  
Deadline is March 1st.  
Sale Day is Saturday, May 17, 2025.

Special Cow Sales

Tuesday February 18, 2025  
Tuesday March 18, 2025  
Tuesday April 15, 2025  
Tuesday May 6, 2025

Don Johnson Bull Sale  
Monday March 3, 2025

New Frontier Bull Sale  
Saturday March 22, 2025

In Stock Today

- Heavy Duty Round Bale Feeders
- For a complete list of cattle for all sales check out our
- Heavy Duty Feed Bunks
- website at: [www.fandrive.com](http://www.fandrive.com)

Sales Manager, Mike Samples  
Office: 785-825-0211 Cell: 785-826-7884  
Salina, Kansas

Listen to our markets on KSAL, Salina at 6:45 a.m. Mon. thru Fri.  
For more information or to consign cattle call sale barn or:  
Fieldman Representatives:

Kenny Briscoe • Lincoln, KS • 785-658-7386  
Lisa Long • Ellsworth, KS • 620-553-2351  
Cody Schafer • 620-381-1050

Auctioneers:  
Kyle Elwood, Brandon Hamel, and Garren Walrod

# Kansas Classifieds

For Sale: Place your 25-word classified in the Kansas Press Association and 135 more newspapers for only \$300/ week. Find employees, sell your home or your car. Call the Kansas Press Association @ 785-271-5304 today!

Misc.: Attention: VIAGRA and CIALIS USERS! A cheaper alternative to high drugstore prices! 50 Pill Special - Only \$99! 100% guaranteed. CALL NOW: 1-866-481-0668

Misc. : We Buy Vintage Guitar's! Looking for 1920-1980 Gibson, Martin, Fender, Gretsch, Epiphone, Guild, Mosrite, Rickenbacker, Prairie State, D'Angelico, Stromberg. And Gibson Mandolins / Banjos. These brands only! Call for a quote: 1-877-560-1992

Misc. : CASH PAID FOR HIGH-END MEN'S SPORT WATCHES. Rolex, Breitling, Omega, Patek Philippe, Heuer, Daytona, GMT, Submariner and Speedmaster. These brands only! Call for a quote: 1-866-481-0636.

Misc.: GOT AN UNWANTED CAR??? DONATE IT TO PATRIOTIC HEARTS. Fast free pick up. All 50 States. Patriotic Hearts' programs help veterans find work or start their own business. Call 24/7: 1-877-560-5087

Misc.: BATH & SHOWER UPDATES in as little as ONE DAY! Affordable prices - No payments for 18 months! Lifetime warranty & professional installs. Senior & Military Discounts available. Call: 1-866-481-0747

Misc.: STOP OVERPAYING FOR HEALTH INSURANCE! A recent study shows that a majority of people struggle to pay for health coverage. Let us show you how much you can save. Call Now for a no-obligation quote: 1-888-519-3376 You will need to have your zip code to connect to the right provider.

Misc: INJURED IN AN ACCIDENT? Don't Accept the insurance company's first offer. Many injured parties are entitled to cash settlements in the \$10,000's. Get a free evaluation to see what your case is really worth. 100% Free Evaluation. Call Now: 1-888-920-1883

Misc: AGING ROOF? NEW HOMEOWNER? STORM DAMAGE? You need a local expert provider that proudly stands behind their work. Fast, free estimate. Financing available. Call 1-877-589-0093 Have zip code of property ready when calling!

Misc: WATER DAMAGE CLEANUP & RESTORATION: A small amount of water can lead to major damage in your home. Our trusted professionals do complete repairs to protect your family and your home's value! Call 24/7: 1-877-586-6688. Have zip code of service location ready when you call!

Misc: NEED NEW WINDOWS? Drafty rooms? Chipped or damaged frames? Need outside noise reduction? New, energy efficient windows may be the answer! Call for a consultation & FREE quote today, 1-866-766-5558 You will need to have your zip code to connect to the right provider.

Your one stop shop for reaching Kansas!

Connecting communities across Kansas.

To advertise:

Contact 785-561-0637

Or [marketplacekansas@gmail.com](mailto:marketplacekansas@gmail.com)





# Market-Place Kansas

*"Your one stop shop for reaching Kansas"*

785-561-0637  
marketplacekansas@gmail.com

## ADVERTISE With us

### Hamit Land & Auction, Inc.

Don Hamit - Broker Auctioneer  
Cell 785-425-8123

Stockton Office - 785-425-6585  
Russell Office - 785-483-7777  
Hays Office - 785-621-4101  
[www.hamitauction.com](http://www.hamitauction.com)

Farm & Ranches  
Farm Equipment  
Antiques - Estates  
Residential  
Commercial

### St. Patrick's CYO Fundraiser TRIVIA NIGHT

**Saturday, February 22 6:00 pm**

Catholic Parish Hall

Price includes Italian dinner, dessert, drinks, trivia, & prizes!  
Carry out meal: \$15/person  
RSVP to 913-424-8408 or [saintpatrickCYO@gmail.com](mailto:saintpatrickCYO@gmail.com)

**KanEquip | NEW HOLLAND**

## NOW HIRING

EXPERIENCED DIESEL SERVICE TECHNICIANS

SCAN THE QR CODE OR VISIT US IN-PERSON TO LEARN MORE

595 N US-77  
HERINGTON  
(785) 258-3707

## Ag Land - New Price!

**625 Acres Irrigated - Thomas County, KS**  
Located 7 miles North and 2 miles East of Oakley, KS. The Buyer shall receive all of the 2025 growing wheat crop and all applied fertilizer on the open cropland acres. The Buyer shall also receive all of the Seller's mineral rights. **\$4,600/Acre**

**162 Acres Prime Cropland - Thomas County, KS**  
Located 7 miles North and 3 miles East of Oakley, KS. The Buyer shall receive all of the Seller's interest in the mineral rights, including the Seller's 1/2 interest in the production from an existing oil well. **\$3,250/Acre** ([www.homelandre.com](http://www.homelandre.com))

**Rock L. Bedore**  
(785) 443-1653  
1055 S. Range  
Colby, KS

**HomeLand REALTY AUCTION** "The Land Man"

# SEIRER'S CLOTHING

## PRESIDENT'S DAY WEEKEND BASEMENT SALE

**FRIDAY, FEBRUARY 14TH (10AM-6PM)**

**SATURDAY, FEBRUARY 15TH (10AM-4PM)**

143 W. LINCOLN AVE LINCOLN CENTER, KS 67455

SHOP MARKED DOWN WOMEN'S, MEN'S, KIDS APPAREL & FOOTWEAR, ACCESSORIES, HOME & GIFT ITEMS IN THE BASEMENT!

\*IN STORE ONLY, ALL SALES FINAL, EXCLUDES LITTLE BLACK CARDS

**IN STORE**  
(785) 524-4752  
143 W Lincoln Ave  
Lincoln Center, KS  
67455  
Mon-Fri 10am-6pm  
Sat 10am-4pm

**ONLINE**  
[shopseirers.com](http://shopseirers.com)  
24/7  
Follow Us On  
Facebook & Instagram

**COFFEE BAR**  
Enjoy a Coffee, Caffe Latte, Cappuccino, Latte Macchiato, Mocha, Flat White, Americano, and more - hot or iced!

# KVK INC.

Heating & Air Conditioning  
**Residential & Commercial**  
We Service & Warranty Parts For All Makes

**24-HOUR EMERGENCY SERVICE**

[kvkinc.biz](http://kvkinc.biz)  
Master Mech. Licensed Bonded Insured

**YORK**  
Ask About Our Discount Club Membership

**785-257-3224**

**84%** of Kansans believe government should be required to publish public notices in print and digital newspapers as a service to the community

*"The right of the people to keep a free & transparent press is obligatory for us citizens. Public notices belong in newspapers!"*

Leavenworth County resident

**KansasPublicNotices.com**  
\*2024 Kansas State Study, Conducted by Coda Ventures



**Contact to Advertise**  
 785-561-0637  
 marketplacekansas@gmail.com

**HORIZON**   
**FARM & RANCH REALTY, LLC**  
 1-888-825-1199 // www.horizonfarmranch.com

**AG LAND**

- \*240 Ac +/- Jewell Co. Tillable. Call Levi! 785.275.2285
- \*4,800 Ac +/- Ranch w/ 30 Wind Turbines/Solar Income in Lincoln Co., Hunting & Farming. Call Ray or Clint!
- \*1,830 Ac +/- Ranch @ Delphos & Minneapolis. Call Ray!
- \*110 Ac +/- Cloud Co. Tillable. Call Ray!
- \*197 Ac +/- Pasture, Tillable, Hunting. SOLD by Clint!

**COMMERCIAL**

\*104 N. Nelson, Bennington, KS. Commercial Building. Call Ty!

**HORIZON HOMES**

- \*1027 N. 190th Rd., Minneapolis, KS. Call Grant! 785.577.3049
- \*500 N. Stark St., Bennington, KS. Call Samantha! 785.577.9878

**CONTACT INFORMATION**

Ray Swearingen - Broker/Owner (785) 452-8498  
 Clint Heller - Sales Agent (785) 545-5737



*Cowman's Kind*  
 BULL & FEMALE SALE



February 22, 2025  
 12:30 p.m. (CST)  
 At the Ranch-  
 Barnard, Kansas

135 GELBVIEH AND  
 BALANCER® BULLS  
 10 ANGUS BULLS &  
 80 FEMALES SELL

WATCH AND BID LIVE ONLINE:  
**DVAuction**  
Specializing in Real Estate Auctions

3041 E. Hwy. 284  
 Barnard, KS 67418  
 Leland Clark: 785.392.0888  
 Kyle Cavalli: 785.531.1947  
 Will Johnson: 316.737.9812  
 Office: 785.792.6244  
 Email: prcc@twinvalley.net

**PROMINENT X GWEN 132G8**  
 BALANCER 43% HOMO BLACK HOMO POLLED

CED BW WW YW MILK MARB.  
 14 0.2 79 121 25 0.14

**POST ROCK CATTLE**

FOR MORE INFORMATION  
 VISIT OUR WEBSITE:  
 www.postrockcattle.com

**Nutrien**  
**Ag Solutions®**

**Nutrien Ag Solutions of Hill City offers:**

- Custom Application
- Dry & Liquid Fertilizers
- Crop Protection
- Seed
- Cash/Carry Chemical Prices
- 6% Incentive Bearing Prepay

*For all your crop inputs,  
 needs, or questions, CONTACT:*

785.421.6275 (office)  
 785.421.8278 (Bryce Bahe)

Vesper Community Center

**FARM SHOW**

SATURDAY Feb 15th  
 9:30am - 2pm

Free admission, gimmies free raffles & prizes

Biscuits & gravy and chili available for purchase  
 in concession stand, & desserts sold by vendors

Upwards of 20 vendors will be exhibiting !!

785-524-2466 www.vespercc.org  
 1247 N 120th Rd Lincoln KS 67455

Concessions are sold by volunteers to fundraise solely for community purposes

**ONLINE-ONLY  
 LAND AUCTION**



**80.87 +/- ACRE DRYLAND FARM  
 GRAHAM COUNTY, KANSAS**

**BIDDING OPENS**  
 THURSDAY, FEBRUARY 27TH  
 10:00 A.M. CST

**BIDDING BEGINS TO CLOSE**  
 FRIDAY, MARCH 7TH  
 10:00 A.M. CST

**BID ONLINE: BID.AGWESTLAND.COM**

- MAJORITY CLASS II & III SILT LOAM SOILS.
- CURRENTLY DRILLED TO WHEAT.
- THE TENANT HAS A 3-YEAR LEASE ON THE CROPLAND, OFFERING AN EXCELLENT FIXED-INCOME STREAM FOR THIS PROPERTY.



**CLAYTON ESSLINGER**

FARM & RANCH SPECIALIST  
 NORTON, KANSAS  
 (785) 202-2066  
 CLAYTON.ESSLINGER@AGWESTLAND.COM

**Herington FFA  
 Work Auction**



Monday, February 17th at 5:00 PM  
 at the Herington Community Building

A supper and silent auction will  
 proceed the work auction.



## Farm Ground for Sale

115 A of good Mitchell County farm ground for sale. Legal description is S1/2 SW1/4 & NE 1/4 SW 1/4 34-9S-10W. Asking price \$3650/acre. *A crop production report may be made available.* Call 402-750-2373

## Two Day February Consignment Auction

Tues. Feb. 25<sup>th</sup> & Wed. Feb. 26<sup>th</sup> 2025  
At lot East of Brush, CO at Jnct of Hwys 34 & 71  
Delivery Deadline for All Items is **WEDNESDAY, FEBRUARY 19<sup>th</sup> 2025.**  
Selling Farm & Construction Equipment, Tractors, Loaders, Forklifts, Skid Steers, Semi & Farm Trucks, Vehicles, ATV's, all types of Trailers, Livestock Equip, Farm & Construction Attachments & more.  
**ALL ITEMS WILL INCLUDE ONLINE BIDDING CAPABILITIES**  
**Live On-Site Bidding Plus Phone & Absentee Bidding.**  
CONTACT AMA WITH QUESTIONS ABOUT WHAT ITEMS WILL BE ACCEPTED.  
**AMA** Consignments  
**Auctioneers Miller & Associates**  
Chuck & Bryson Miller  
970-842-5575 • Brush, CO  
www.AMAAuctions.com



Saturday, February 22, 2005

Chapman High School Auditorium

5 p.m. Soup Supper & Silent Auction • 6 p.m. Live Auction

### SPONSORS

#### VIP SPONSOR

Agri-Trails Coop  
Astra Bank  
Harris Crop Insurance, LLC

#### LEADERSHIP SPONSOR

Astra Insurance - Drew Snitker  
Bennington State Bank  
- Mike Anderes  
Blocker Hay and Cattle, LLC  
- Daryl Blocker  
Hildebrand Farms - Melissa Reed  
Ironstone Wealth Advisors  
- Anita Miller, Angela Holt, Hannah Hahn, and Collyn Fouard  
Kevin Harris Farms, LLC  
MacDon  
Wildcat Services - Tyler Kuntz  
Willmann Ag, LLC  
- Cory and Becky Willmann

#### CREED SPONSOR

Amanda West Insurance Agency  
CF Repair, LLC - John, Kerby, Kody & Becky Chase  
Kent and Janie Law  
Phillips Seed Farms, Inc.  
Pinnacle Bank  
Pioneer Farm and Ranch  
Richard and Lynette Campbell  
Smart Insurance  
West's Country Mart  
Zenger Management - Rex Zenger

#### IN KIND

J.C. Livestock,  
Clay Center Livestock  
- Langvardt Family

### LIVE AUCTION

- **AgriGold Hybrids**  
- **Anderes Seed Sales**  
- \$300 Seed Credit
- **Bert & Wetta**  
- 1,000 Pounds of Pellets
- **Chapman American Legion**  
- Electric Chainsaw
- **Copeland Insurance**  
- **Sheldon Jones**  
- Two Camping Chairs, Beach Towels, Cooler with Snacks
- **Crop Service - Dale Koop**  
- \$500 Ohlde Seed Credit
- **Deer Creek Drones**  
- Aerial Homestead Photos
- **Diecks - Clay Center Locker**  
- 50 Piece BBQ Box Set (2)
- **First Choice Meats**  
- \$150 towards Processing of Hadley Chase's 1/2 hog
- **Flint Hills Ag Services - Brandon and Diana Dibben and Kody Chase**  
- \$500 Channel seed credit
- **Hadley Chase**  
- 1/2 Hog
- **Judy Sorenson**  
- **Class of 1964**  
- Youth African Quilt
- **JWS Repair, LLC**  
- Patio Set: Table and 4 Chairs
- **Karl's Trucking**  
- Tool Set
- **Katie Stoffer**  
- One-half Processed Lamb
- **Kevin and Rosemary Harris**  
- 2 Tickets to a 2025 KSU Football game
- **Kim Sorenson**  
- Irish Quilt
- **Last Chance Graphics**  
- Carhart Duffle Bag Set, Gloves, Hats, and Hoodie
- **Lumber House True Value**  
- 1/4 inch Hex Impact Driver  
- 3/8 inch Ratchet
- **Matt and Gaea Hock family**  
- 100 Pounds of Hamburger
- **Prairieland Partners**  
- John Deere Pedal tractor, JD 7730 FFA tractor
- **Rawhide Portable Corral**  
- One Week Use of Portable Corral
- **Ronnie Phillips**  
- Chapman FFA  
- Charcuterie Boards
- **Scripter Farms**  
- Farmer Wall Hanging
- **Stiefel Theatre**  
- Two Tickets for March 29  
- Two Tickets for May 8
- **The Barn Bed and Breakfast**  
- Lodging for 2 for One Night, Includes Supper and Breakfast
- **Walt's Four Seasons Campground & Country Store**  
- \$150 Pool Party
- **Warren Wilson Hay**  
- 2 Bales Alfalfa & 2 Bales Brome

### SILENT AUCTION

- **A Touch of Western**  
- Tallow Products
- **Abeltd Club Lambs**  
- Two Bags Umbarger Sheep or Goat Geed
- **Abilene Termite & Pest Control**  
- Interior/Exterior Pest Treatment
- **Aid Station**  
- \$25 Gift Cards
- **Aksent Boutique**  
- \$50 Gift Cards
- **Amanda's Bakery & Bistro**  
- \$20 Gift Card
- **Amy Jones**  
- Norwex Gift Basket
- **Bob and Patti Anderes**  
- Horseshoe Cross
- **Boho Mama Creations**  
- \$50 Gift Certificate
- **Casey's**  
- \$25 Gift Cards, with One Free Large Single Topping Pizza
- **Cashion's Kitchen**  
- Sweet Treats
- **Chapman Food Mart**  
- \$25 Gift Cards
- **CHS Irish Ink**  
- \$25 Gift Card, FFA Notepads
- **CHS T-Works**  
- \$20 Gift Card and Irish T-shirt  
- Sweatshirt & Long Sleeve
- **Chisholm Trail Seeds**  
- \$300 Seed Credit
- **DK County Heritage Center**  
- 2 Admission Tickets, 2 Carousel Tickets
- **Don's Tire and Supply**  
- \$100 Gift Certificates
- **Farmer Direct Foods**  
- Flour: White Whole Wheat, Red Whole Wheat, Heirloom Wheat, All-purpose
- **Grass and Grain**  
- One Year Subscription
- **Great Plains Theatre**  
- Two Great Plains Theatre Tickets
- **Harris Cattle**  
- Cattle Syringes
- **High Noon Feeds/Walnut Grove Livestock**  
- Two Bags of Standard Livestock Feed & Kalf Koozie
- **Holiday Inn Express**  
- One Night's Stay
- **Jackson Flats Washout**  
- Basic Stock Trailer Washout
- **JBloom - Sarah Stirtz**  
- Bracelet, Necklace, & Earrings
- **Junction City Family YMCA**  
- 3 Month Family Membership
- **KJIL Radio**  
- Gift Basket
- **Laci Hartwick Photography**  
- Mini Photo Session
- **LaFiesta (JC Only)**  
- Gift Certificates Combo Meals
- **M&M Tire**  
- \$50 Gift Certificate
- **Martinelli's**  
- \$20 Gift Certificates
- **Mary Kay - Jennifer Andres**  
- \$25 Gift Card & Pedicure Set
- **Massage 4 Life**  
- One Hour Massage
- **Midwest Creamery**  
- \$25 Gift Cards
- **O'Reilly Auto Parts**  
- Branded Wash Bucket  
- 73 Piece 1/4" Socket Set
- **Prairieland Partners**  
- John Deere Pedal tractor, (2) JD 7730 FFA tractors, JD 1/64 8300 FFA tractor
- **Rawhide Portable Coral**  
- Hat, Koozie, & Sorting Stick  
- Hat, T-shirt, Yeti Coffee Cup
- **Red Aspen**  
- Red Aspen Gift Basket
- **Rittel's Western Wear**  
- Montana Silversmith FFA necklace  
- Montana Silversmith FFA earrings
- **Rolling Hills Zoo**  
- 4 Child Admission Tickets
- **Scouler Grain**  
- \$.10/bushel Premium for any Grain Contracted at our Salina Facility
- **Shelly Picking**  
- Youngie Gift Basket
- **Stalder Auto - Joe Stalder**  
- Basket
- **Stephens Chiropractic - Mandy Traskowsky**  
- One Hour Massage
- **The Appliance Center**  
- \$100 Gift Card
- **The Flower Box, Inc.**  
- \$50 Gift Card
- **Walt's Four Seasons Campground & Country Store**  
- \$30 Gift Certificate - 2 Pizzas & 2 Liters of soda

AUCTION PROCEEDS DIRECTLY BENEFIT CHAPMAN FFA STUDENTS

GG&T CATTLE CO.

50<sup>TH</sup> ANNIVERSARY!

CALVING EASE & PERFORMANCE SALE

Thursday, Feb. 20, 2025 • 12 Noon • At the Ranch



### GGT BOCEPHUS 142M

BW -1.3 WW +93 YW +136 Milk +21



BW 87  
205 WT.  
971

This sale will be broadcast live on the Internet.  
**DVAuction**  
Broadcasting Real-Time Auctions  
Real time bidding & proxy bidding available.

## SELLING

65 Purebred & High Percentage Salers Bulls  
30 Registered Angus  
65 Optimizer Bulls, Black & Red  
Plus: 40 Bred Heifers

Salers Sires: Bulletproof, Geronimo, WWCS Joe, Bonfire, Breakshot, Quinter, Bedrock, and new sires: Gameplan, Lay Up, Hummer, Guiding Light and MORE!

Angus & Optimizer Sires: Rimshot, Gameplan, Lay Up, Breakshot, Bullet Train, Bulletproof, Substance, Jumpstart, Craftsman, Barricade, Exponential, Growth Fund and MORE!

Free Delivery to Central Locations! Call, email or write for a catalog.

Garrett: (785) 769.3165 • Reid (785) 769.4855 • ggtcattle.com • 1695 County Road 80, Quinter, KS 67752



# Lincoln County Hospital

*Neighbors Helping Neighbors*



**785.524.4403**

[www.lincolncountyhospital.net](http://www.lincolncountyhospital.net)

**Lincoln Medical Clinic**

Mon., Tues., Thurs., Fri.; 8:00 a.m. - 5:00 p.m.

Wed.; 7:00 a.m. - 7:00 p.m.

**785.524.4474**

**Sylvan Medical Clinic**

Saturday's 8:30 a.m. - 1:00 p.m.

*Appointments and Walk-Ins accepted at both Clinics*





**KENDRA JOHNSON**



**BROKER**

**785-420-7282**

POSTROCKREALTY@GMAIL.COM

POST ROCK REALTY  
129 E LINCOLN AVE. LINCOLN, KS 67455

*Remember to check  
your tire tread  
regularly.*

*Come see us for a  
quote on new tires.*

*Stay safe!*



**456 Highway 77  
Herington  
785-258-8024**

**General Public  
Transportation  
BUS**

**MONDAY - FRIDAY**

**8 a.m. - 4 p.m.**

**\$1.50 One Way**

**\$3 Round Trip**

**785-258-2956**

**Curb to Curb Service  
Wheelchair Accessible  
First Come, First Serve**

*This project is funded by the  
KDOT Public  
Transportation Program*

Supported by KDOT,  
City of Herington, Fares and  
General Donations

**Eland Title Company, LLC**

Title - Closing - 1031 Exchange - Escrow  
Serving Hill City and all of Kansas for 10+ years  
8 Office Locations in Kansas

Ken Eland- Owner

Kally Keith - kally@elandtitleco.com

Kayla Lyon - kayla@elandtitleco.com

Located @ 315 N. Pomeroy, Hill City, KS 67642  
785-421-2312



COLBY • OAKLEY • HOXIE • HILL CITY  
LAWRENCE • BALDWIN CITY • PAOLA • PLEASANTON

**TOP TEN AGENT OF 2022**  
FIRST AMERICAN TITLE KANSAS

  
*Caring for you.*



**Memorial Health System  
with community health partners;  
Dickinson County Health Department and  
K-State Research and Extension-  
Chisholm Trail District**

*present*

**Community Health Needs  
Assessment 2025**

**Your feedback is valuable to us!**  
Please follow the link to our Community Health  
Needs Survey

<https://www.surveymonkey.com/r/CHNA2025-DKCO>

or scan the QR Code







Protecting Farmers  
Since 1988  
785.735.9485  
kippesinsurance.com

# KIPPES INSURANCE AGENCY, INC.



## High Plains Farm Credit

YOUR CROPS.  
YOUR LIVESTOCK.  
WE'RE READY.

Making  
agricultural  
loans for over  
**100 years!**



Jay Ziegelmeier

Contact us  
TODAY!  
785-625-2110

HighPlainsFarmCredit.com | Strong on Ag Lending



ALPHA  
AG AIR LLC.

Tracy Hillegeist 785-577-3017  
Lucas Baumbach • 785-243-4803  
Beverly, Kansas

# Feel The Difference



Women's Health • Ear, Nose & Throat Surgery • Gastroenterology  
General Surgery • Ophthalmology  
Oral & Maxillofacial Surgery • Orthopedic Surgery • Podiatry • Urology

**Salina Surgical  
Hospital**

**785-827-0610**  
401 Santa Fe, Salina, KS

Salina Surgical Hospital is PROUD to be partially owned  
by local community involved physicians.

Locally  
Serving You:  
Colleen Hardiek  
Baylee Pfeifer



# Garrett

INSURANCE

110 W. Main St., Hill City, KS 67642  
Ph: 785-421-2127



**Gove County Medical Center**  
Committed to Others. Always.

Snoring hurting your relationship?

Snore / Sleep Apnea, and Restless Leg therapy included in our Sleep Study program

Ask Your Doctor For a Referral Today (785) 754-5179

**PIONEER**

PIONEER PIONEER

SEED CORN SOYBEAN SEED

HERBICIDE RESISTANCE

WITH YOU FROM THE WORD GO

**River Hills Seed, Inc.**  
SHELDON DAUGHERTY  
785-392-4027 • 845 Avenue B, Minneapolis, KS 6746

\*\*\* Trademarks and service marks of Dow AgroSciences, DuPont or Pioneer, and their affiliated companies or their respective owners. © 2019 PHH, 190-1143, 3 WFTWG Vert

**WALK-IN CLINIC | 8AM-6PM | MON-SAT**

**DOCTORS** **WITHOUT DELAY**

**ALL PATIENTS, ALL AGES WELCOME**  
NO APPOINTMENT NECESSARY

**SHORT WAIT, QUICK RESULTS**  
ONSITE DIGITAL IMAGING, LABS & EMERGENCY ROOM

**FULL SERVICE CLINIC**  
CONVENIENTLY LOCATED IN STATE-OF-THE-ART HOSPITAL

**Rooks County Health Center**  
1210 N. Washington, Plainville, KS 67663  
DocsWithoutDelay.com | 785.688.DOCS (3627)

*'A Tradition of Caring Since 1970'*

**Chapman Valley Manor**  
A Non Profit Skilled Nursing Facility

**Administrator:**  
**Amanda Jeardoe**  
1009 Marshall • PO Box 219  
Chapman, KS 67431  
785-922-6525  
chapval@chapmanvalleymanor.org  
christyloy@chapmanvalleymanor.org

**HOMESTEAD VILLAGE APARTMENTS**

NOW LEASING  
1100 N. Broadway St. Herington, KS

- 1 and 2 bedroom units
- Appliances furnished
- Laundry hookups
- Single detached garage
- Snow removal & lawn care
- Pet with pet deposit
- All utilities included plus cable
- Clubhouse on site

For more information contact Mgr. Lori Dornbusch  
(785)258-2956 • Lori.Hilltop@yahoo.com



# SEIRER'S CLOTHING

*Rural boutique established in 1984 and located in the heart of Kansas. Offering a variety of hand-selected items for the whole family.*

**USE CODE: "MARKET" ONLINE & RECEIVE 10% OFF ORDER!**

**BRANDS WE CARRY:**

ARIAT	KEREN HART	CORKYS FOOTWEAR
BRÜMATE	SKECHERS	FLAG & ANTHEM
JEN & CO	SILVER JEANS CO	SOUTHERN LADY
MARY MEYER	SPLENDID IRIS	STONEWALL KITCHEN

**SERVICES WE OFFER: DRY CLEANING & TUXEDO RENTAL**



<p><b>IN STORE</b> (785) 524-4752 143 W Lincoln Ave Lincoln Center, KS 67455 <b>Mon-Fri Sat</b> 10am-6pm 10am-4pm</p>	<p><b>ONLINE</b> shopseirers.com 24/7 <b>Follow Us On</b> Facebook &amp; Instagram</p>	<p><b>COFFEE BAR</b> Enjoy a Coffee, Caffe Latte, Cappuccino, Latte Macchiato, Flat White, Mocha, Americano, and more - hot or iced!</p>
---	--	--